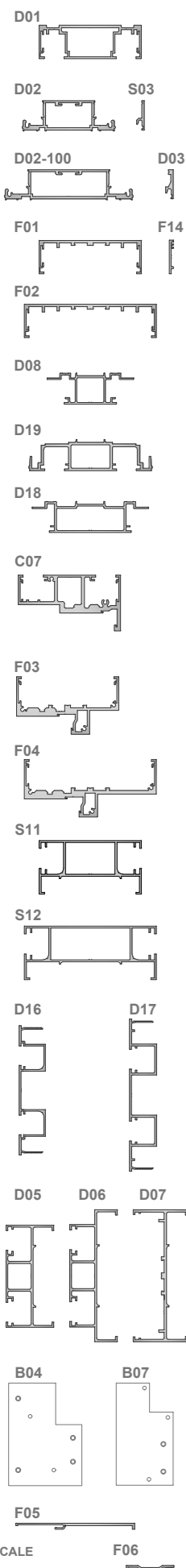
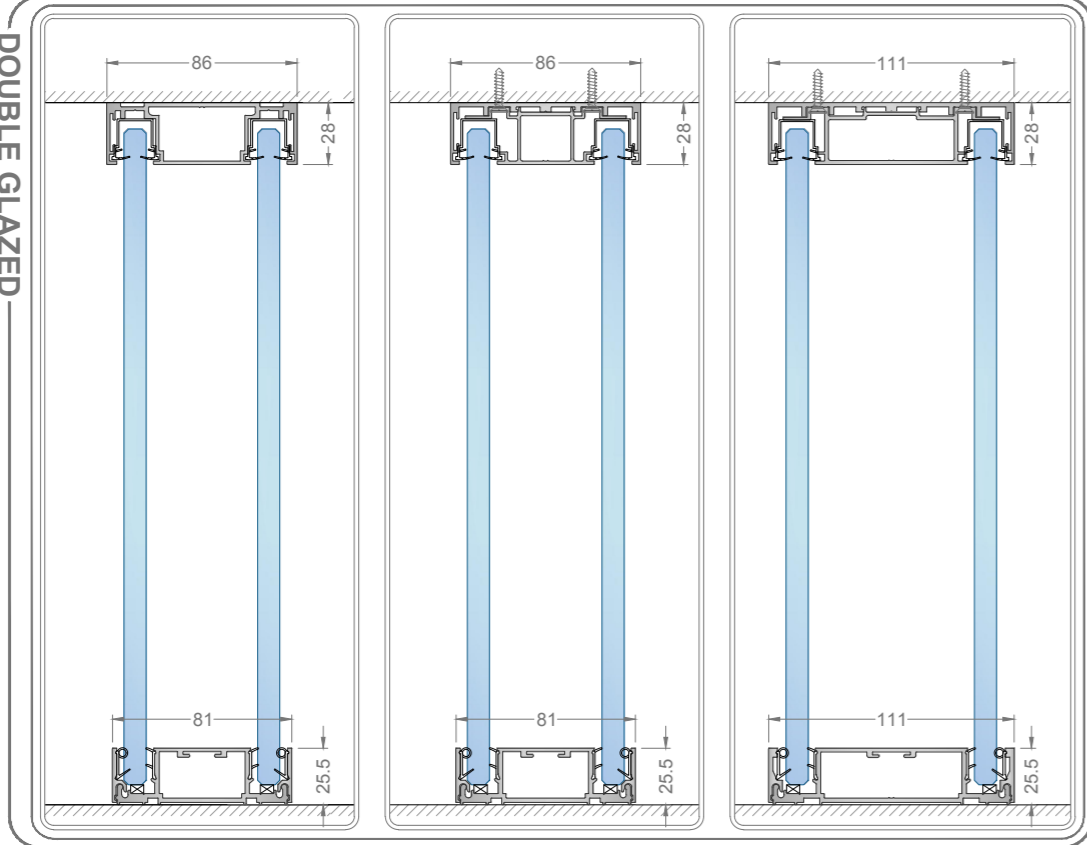


PROFILE HEAD & BASE

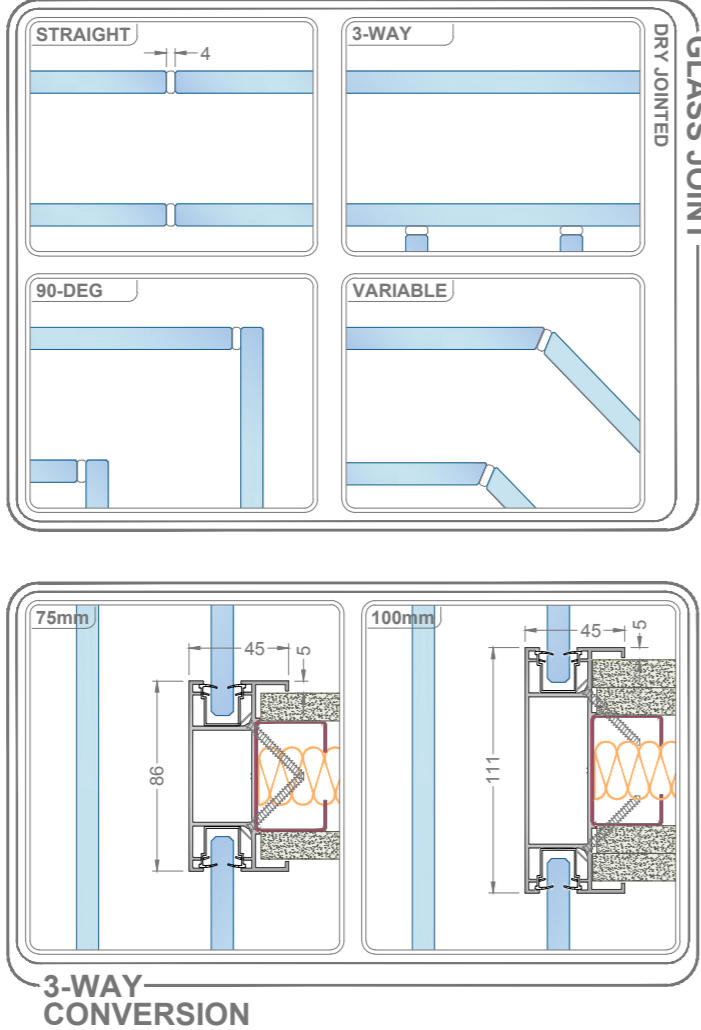
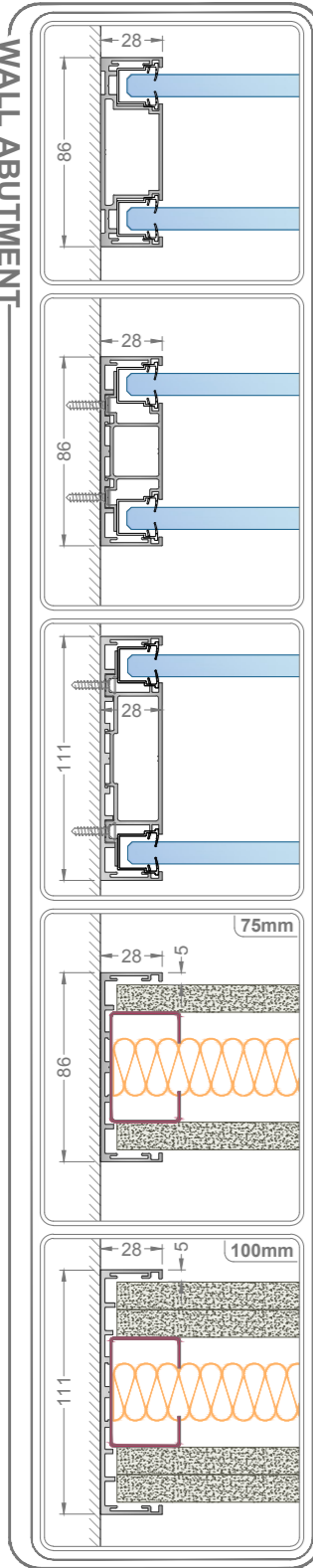
IDENTIFICATION



DOUBLE GLAZED

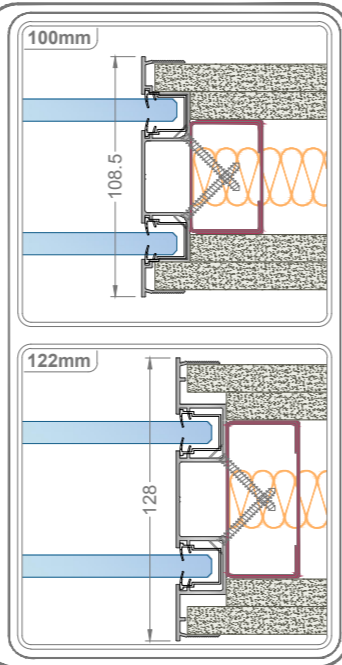


WALL ABUTMENT

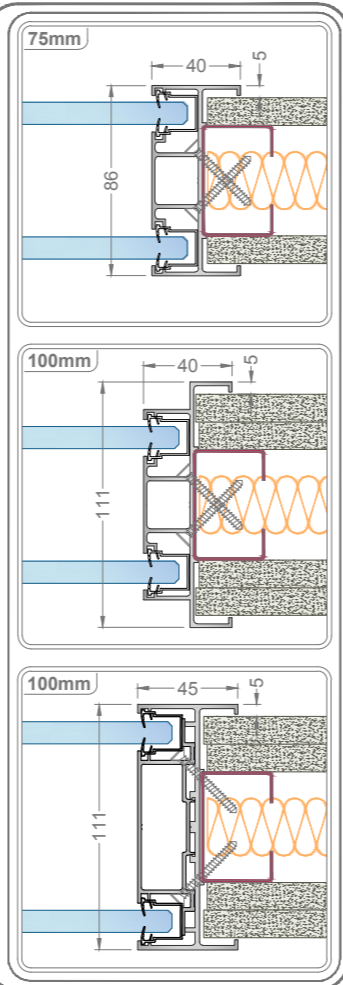


GLASS JOINT

TAPABLE CONVERSION

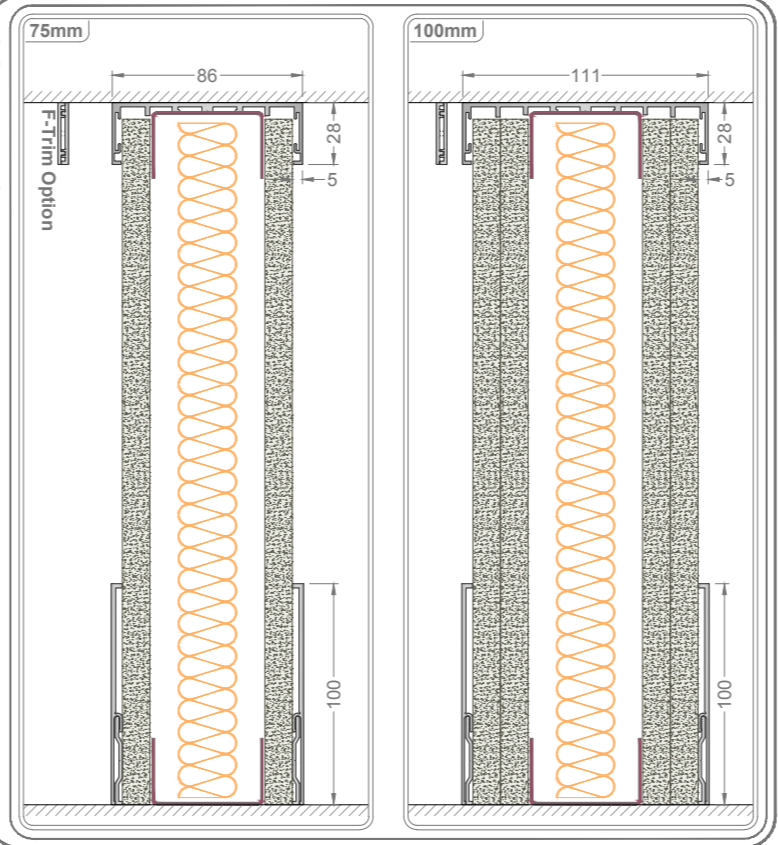


REDUCER POST



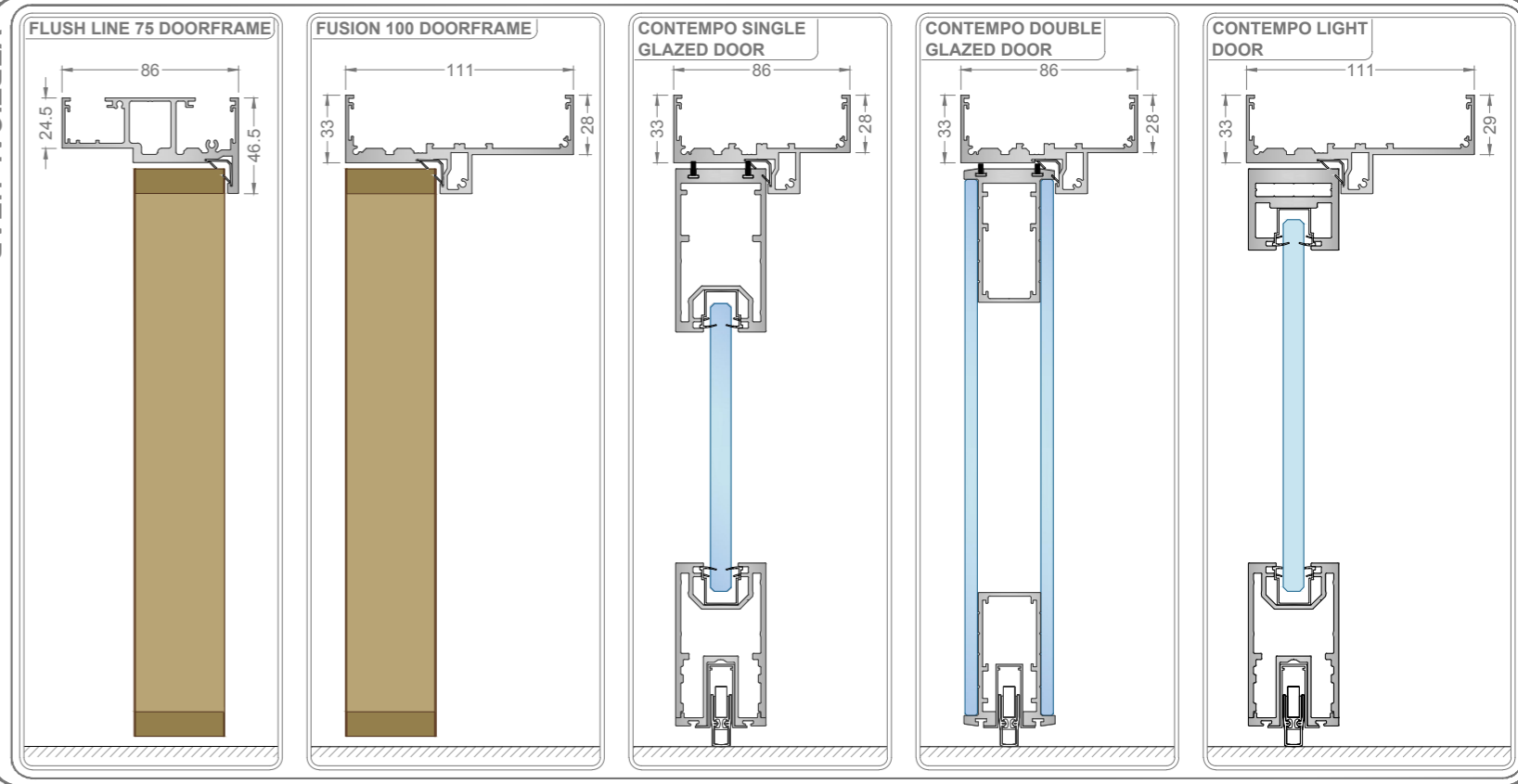
HEAD & BASE

SOLID 75 & 100mm

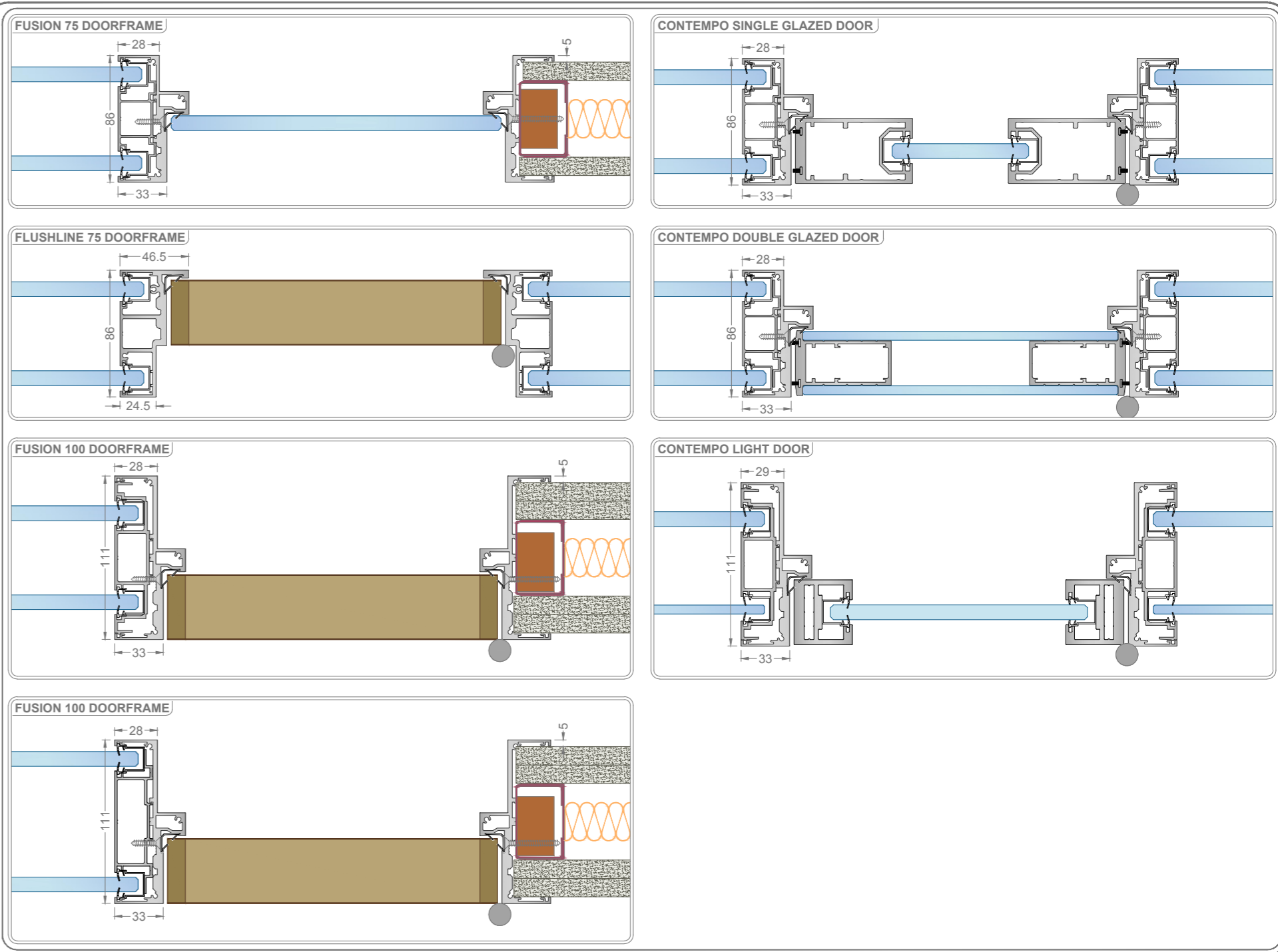


DOORFRAMES

VERTICAL HEAD



HORIZONTAL JAMB



Performance Summary

System Title: Frequency 75 Double Glazed

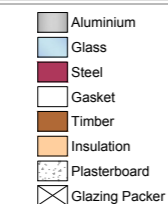
Document No.	Description	Rw
CDG-AP19	10 & 10mm Toughened Glass	42 dB
CDG-AP6	10 & 12mm Toughened Glass	43 dB
CDG-AP7	12 & 12mm Toughened Glass	45 dB
CDG-AP8	10 Toughened & 12.8mm Acoustic Safety Glass	48 dB
CDG-AP9	10.8 & 12.8mm Acoustic Safety Glass	49 dB
CDG-AP11	12.8 & 12.8mm Acoustic Safety Glass	50 dB
CGD-AP10	Contempo 12mm Toughened Glass Door	36 dB
CGD-AP1	Contempo 12.8mm Acoustic Safety Glass Door	40 dB
CGD-AP2	Contempo 6 & 6mm Toughened Glass Door	41 dB
CGD-AP7	Contempo Type 'S' Double Glazed Door	46 dB
CLGD-AP1	Contempo Light 12mm Toughened Glass Door	38 dB
CLGD-AP2	Contempo Light 12.8mm Acoustic Safety Glass Door	41 dB
FTD-AP4	Timber Door 44mm in Aluminium Frame	36 dB
FTD-AP5	Timber Door 54mm in Aluminium Frame	36 dB
FTD-AP1	Timber Door 44mm in Aluminium Frame	37 dB

Performance Summary

System Title: Frequency 100 Double Glazed

Document No.	Description	Rw
CDG-AP27	12 & 12mm Toughened Glass	47 dB
CDG-AP26	10 & 12mm Toughened Glass	48 dB
CDG-AP29	10.8mm & 12.8mm Acoustic Safety Glass	51 dB
CDG-AP28	12mm Toughened & 12.8mm Acoustic Safety Glass	51 dB
CDG-AP20	12.8 & 12.8mm Acoustic Safety Glass	54 dB

Drawing Title: Frequency 75 & 100 Double Glazed
Scale @ A3: 1:4 unless stated
Drawn by: SB
Checked: -
Date: 13/11/20
Rev.: -
Drawing no.: F75-100-FM



Do not scale this drawing (printed or electronic versions).
This drawing is copyright.
Discrepancies and/or ambiguities within this drawing, between 2 and information given elsewhere, must be reported immediately to the office for clarification before proceeding.
All work to be carried out in accordance with the latest British Standards/Code of Practice unless specifically stated otherwise in the specification.
Responsibility for the reproduction of this drawing in paper form or as a printed or electronic version, lies with the customer. To check that all information has been reproduced in full and is correct when compared to the original paper or electronic image.
Copyright representations of details on this drawing have been so indicated, but are approximate only. Please refer to Specifications and/or Details for actual sizes.