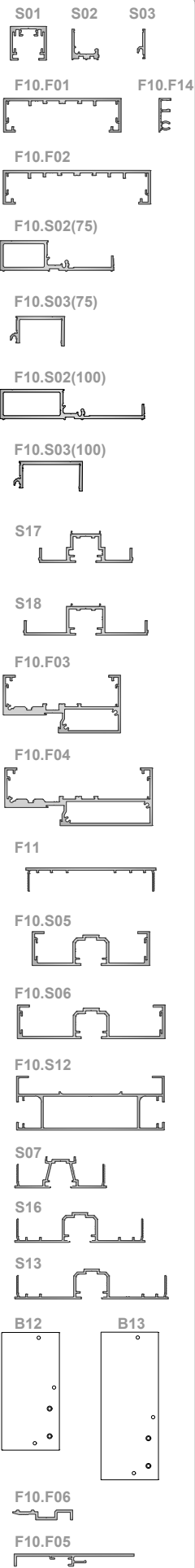


# PROFILE HEAD & BASE

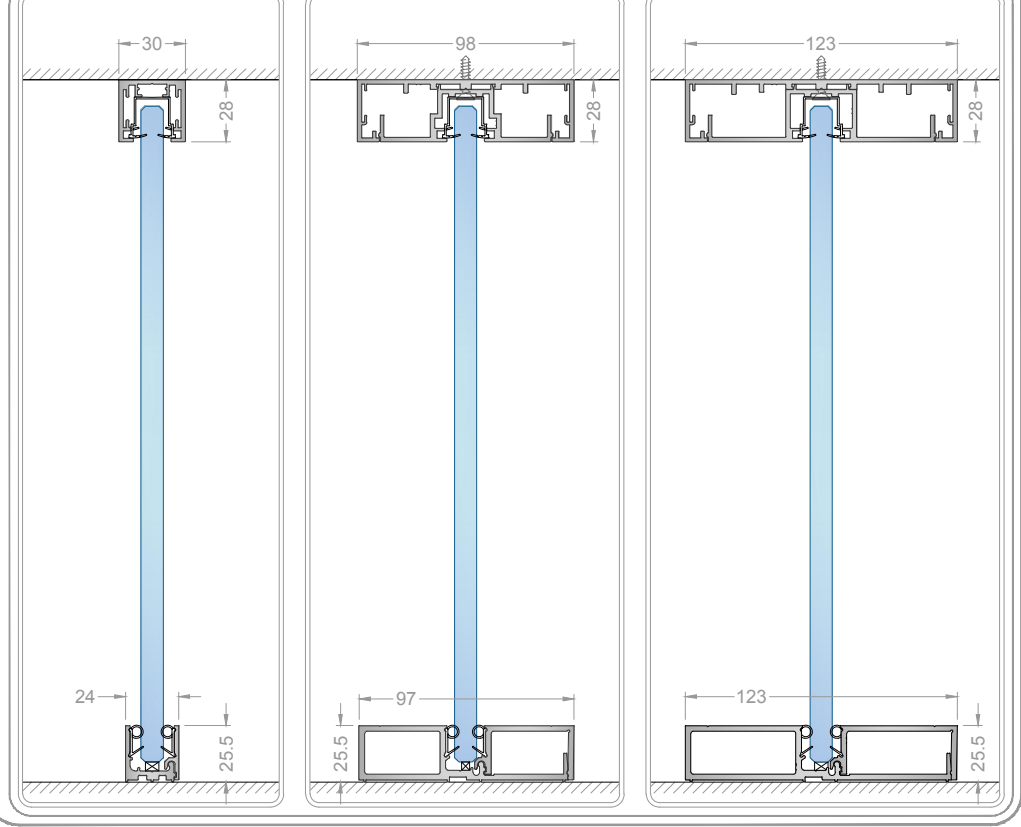
IDENTIFICATION



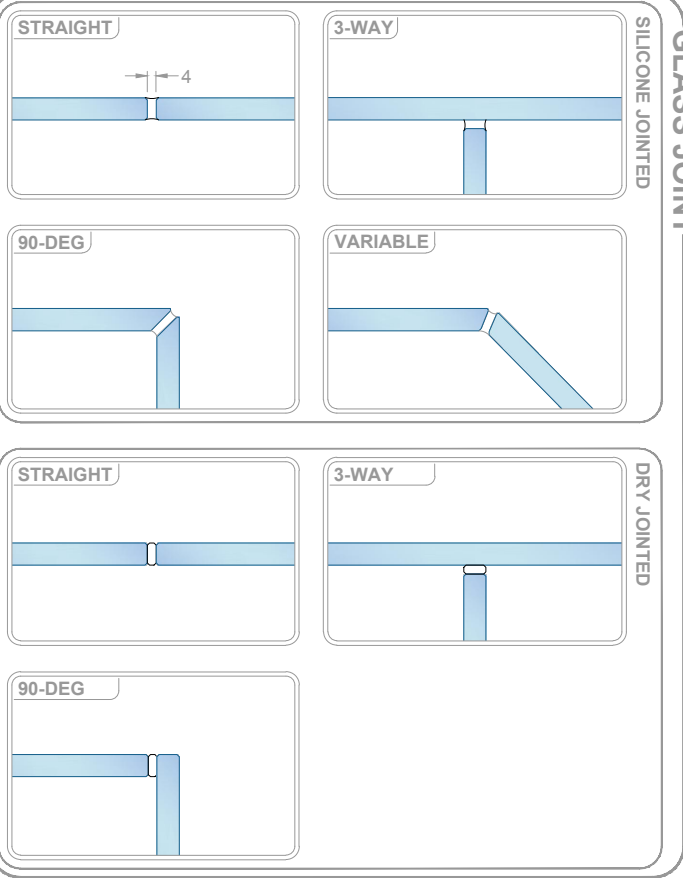
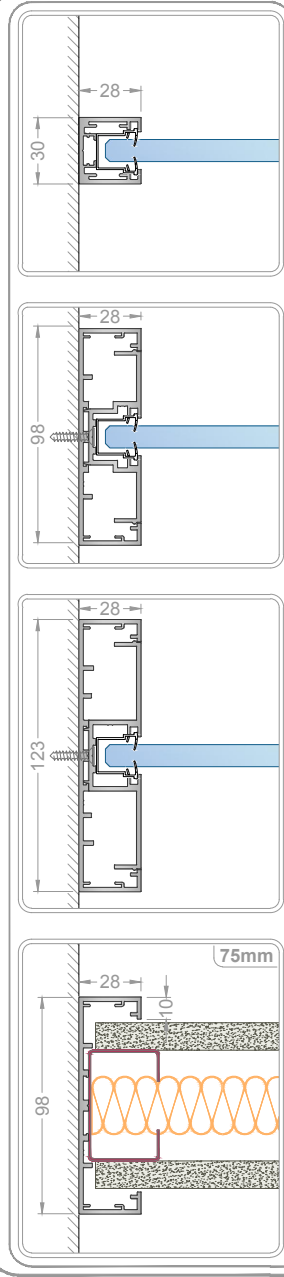
SCALE  
1:6 @ A3

# HEAD & BASE

SINGLE GLAZED



WALL ABUTMENT

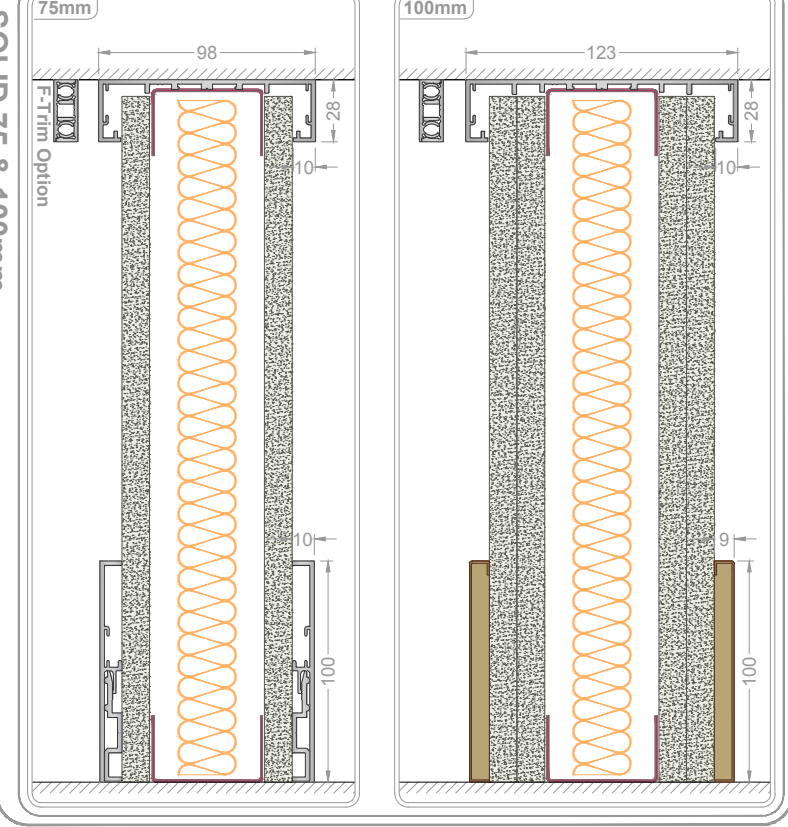


SILICONE JOINTED

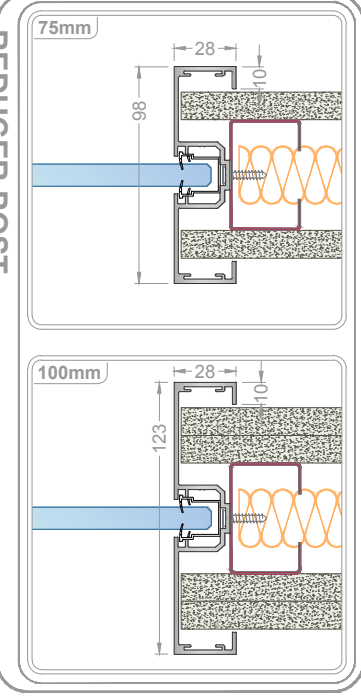
DRY JOINTED

# HEAD & BASE

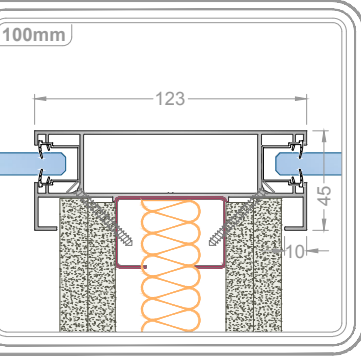
SOLID 75 & 100mm



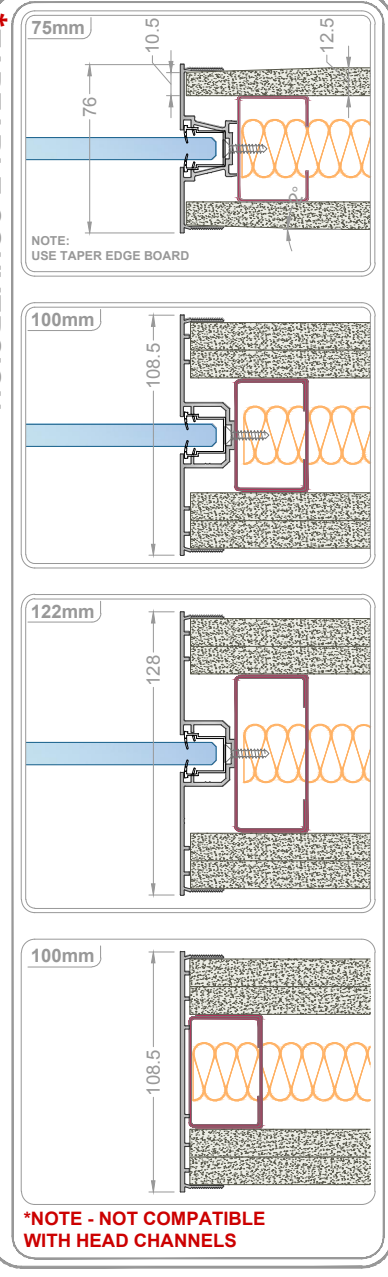
REDUCER POST



3-WAY CONVERSION

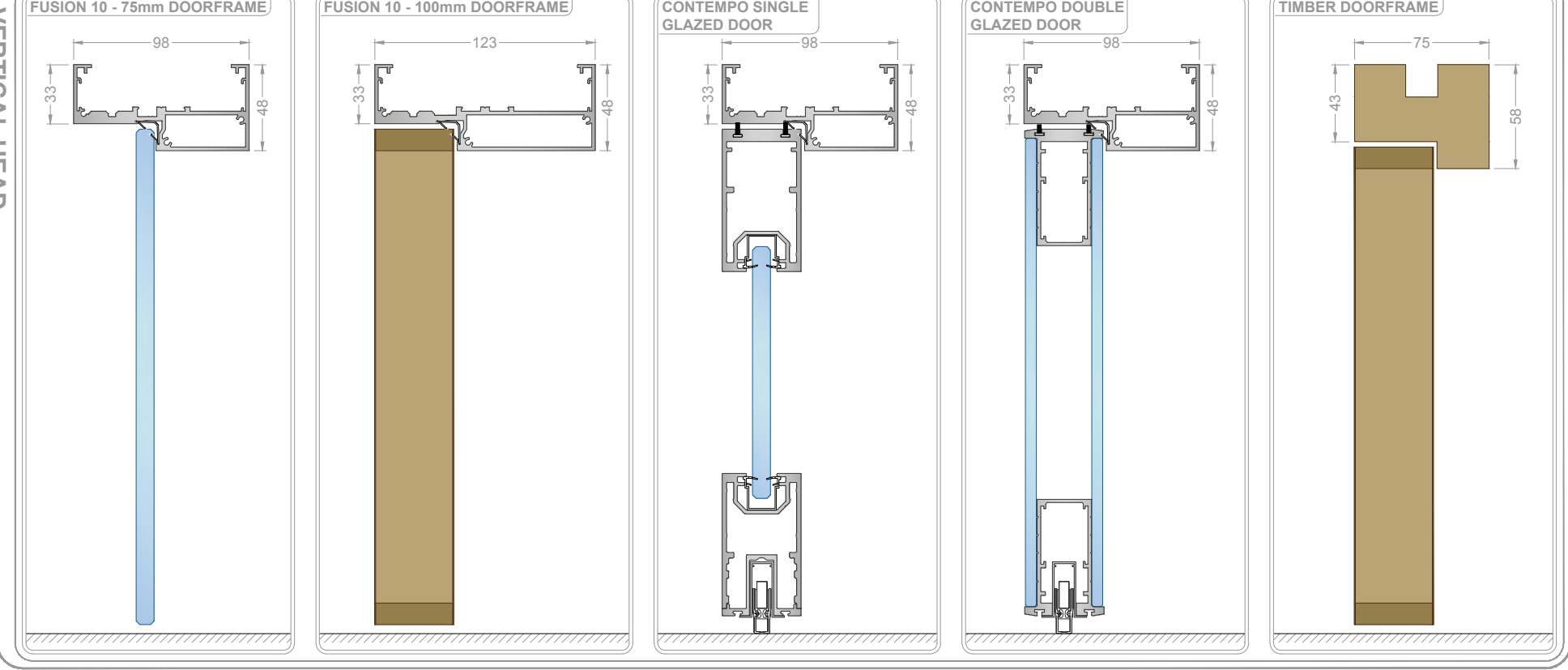


\*TAPEABLE CONVERSION

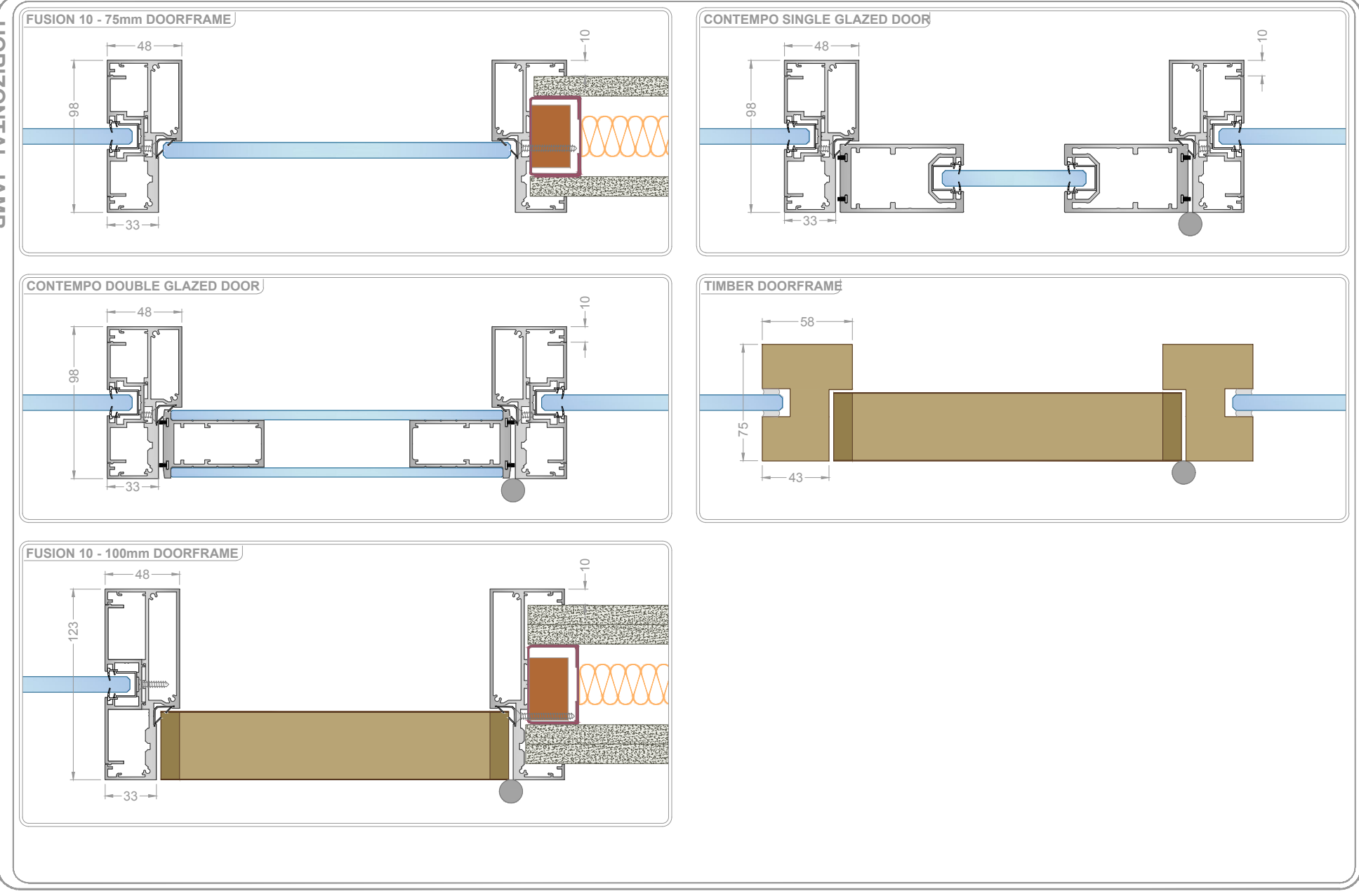


# DOORFRAMES

VERTICAL HEAD



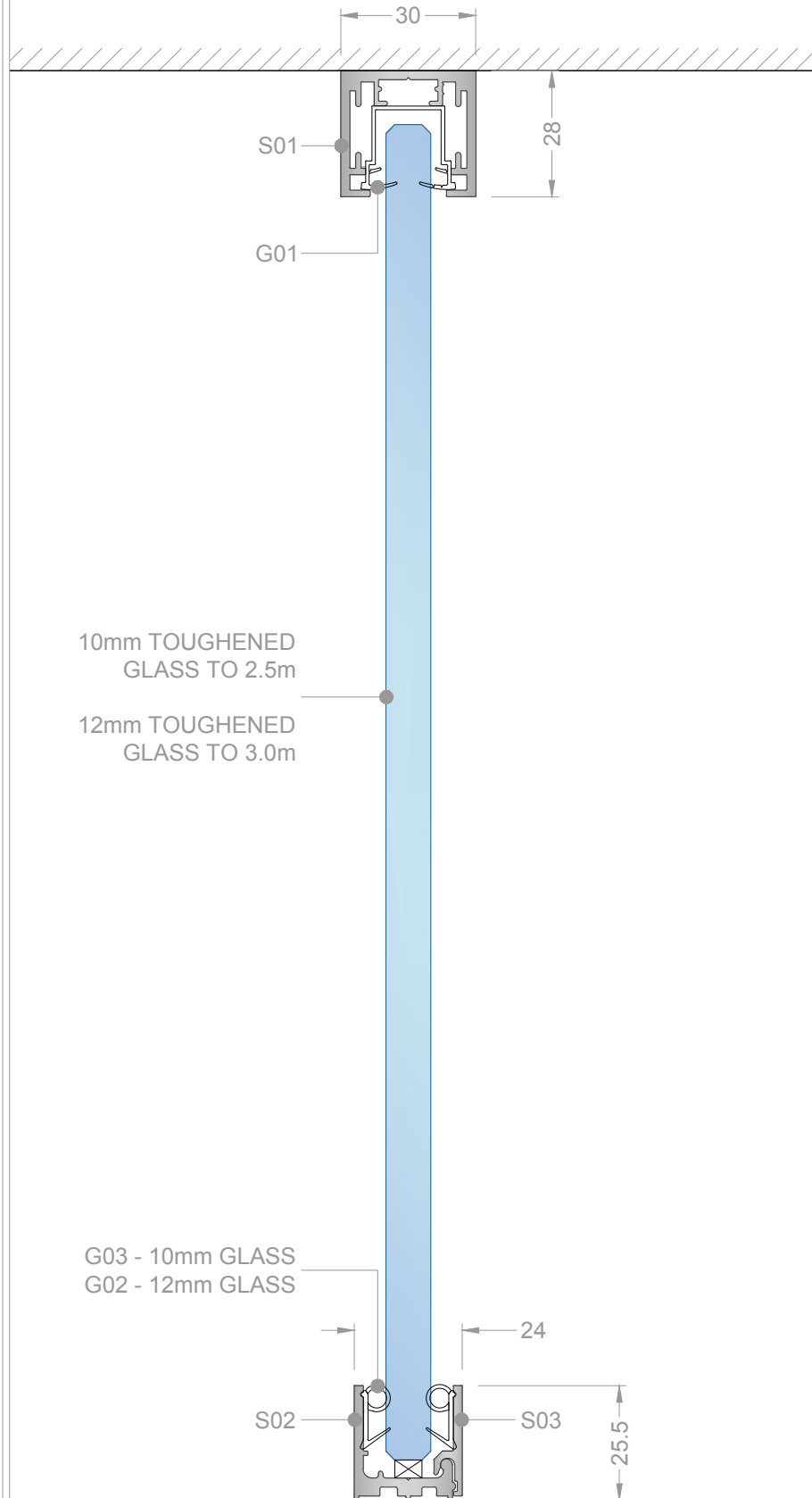
HORIZONTAL JAMB



## Performance Summary

System Title: Fusion 10 - Clear Single Glazed		
Document No.	Description	Rw
CSG-AP1	10mm Toughened Glass	34 dB
CSG-AP2	12mm Toughened Glass	36 dB
CSG-AP3	12.8mm Acoustic Safety Glass	40 dB
CGD-AP10	Contempo 12mm Toughened Glass Door	36 dB
CGD-AP1	Contempo 12.8mm Acoustic Safety Glass Door	40 dB
CGD-AP2	Contempo 6 & 6mm Toughened Glass Door	41 dB
CGD-AP7	Contempo Type 'S' Double Glazed Door	46 dB
FTD-AP2	Timber Door 44mm in Timber Frame	36 dB
FTD-AP3	Timber Door 44mm in MDF Veneered Frame	36 dB
FTD-AP4	Timber Door 44mm in Aluminium Frame	36 dB
FTD-AP5	Timber Door 54mm in Aluminium Frame	36 dB
FTD-AP1	Timber Door 44mm in Aluminium Frame	37 dB

# FUSION 10



Drawing Title **Fusion10-Sgl Glazed Head & Base**

Scale @ A4  
NTS  
unless stated

Drawn by  
S.BM

Checked  
-

Date  
20/02/17

Drawing no.  
F10-SG-HB

Rev.  
01



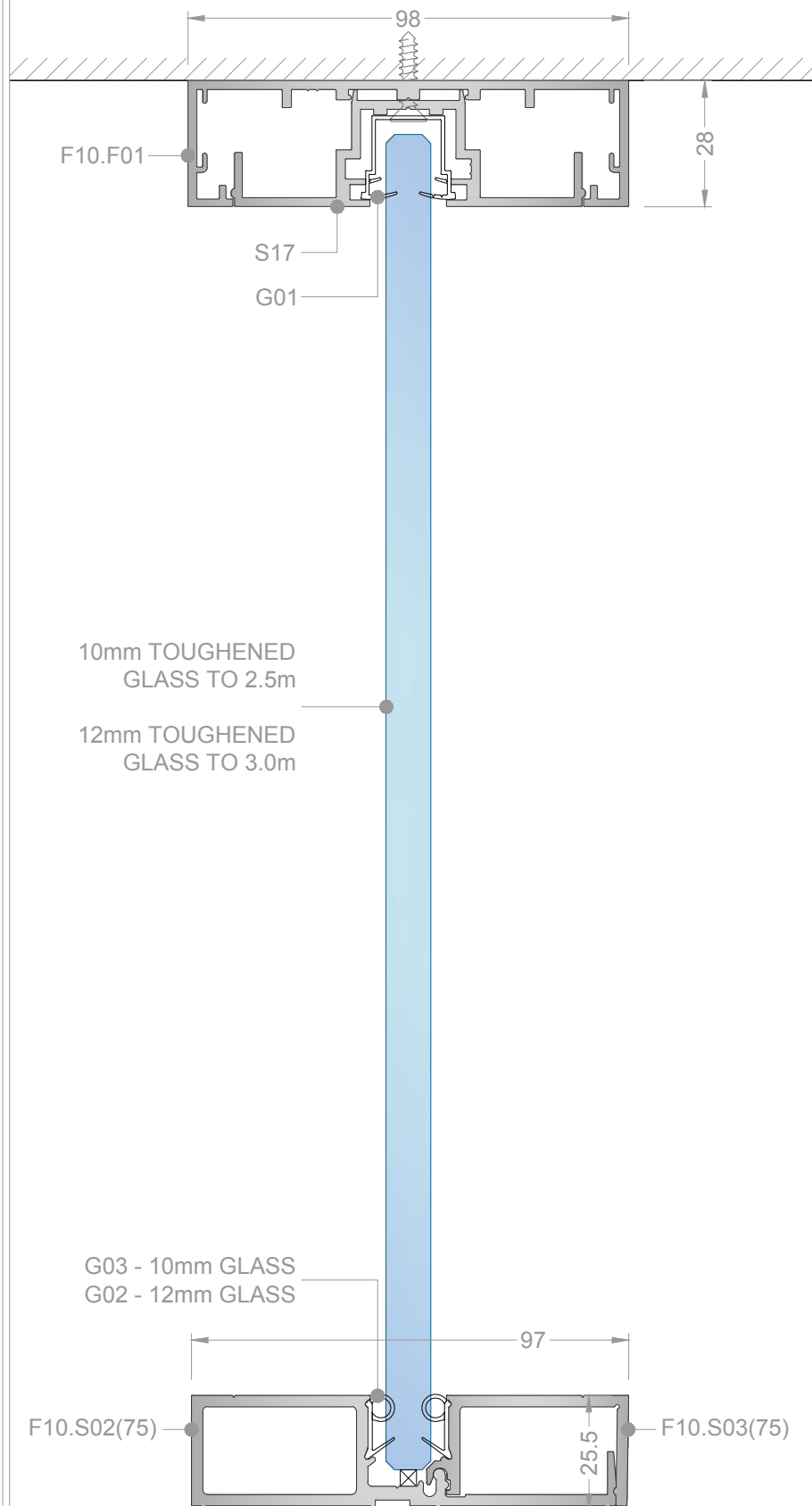
Unit 6, I O Centre,  
Salbrook Road Industrial Estate,  
Salfords, Surrey,  
RH1 5GJ  
T: +44 (0)1293 220970  
E: info@fusionpartitions.com

- Aluminium
- Glass
- Steel
- Gasket
- Timber
- Insulation
- Plasterboard
- Glazing Packer



Do not scale this drawing (printed or electronic versions)  
This drawing is copyright  
Discrepancies and/or ambiguities within this drawing, between it and information given elsewhere, must be reported immediately to this office for clarification before proceeding.  
All works to be carried out in accordance with the latest British Standards/Codes of Practice unless specifically directed otherwise in the specification.  
Responsibility for the reproduction of this drawing in paper form, or if issued in electronic format, lies with the recipient to check that all information has been replicated in full and is correct when compared to the original paper or electronic image.  
Graphical representations of details on this drawing have been co-ordinated, but are approximations only. Please refer to Specifications and / or Details for actual sizes.

# FUSION 10 - 75mm



Drawing Title Fusion10-Sgl Glazed  
75mm Head & Base

Scale @ A4 NTS  
Drawn by S.BM  
Checked -  
Date 20/02/17

Drawing no. F10-SG75-HB  
Rev. 01



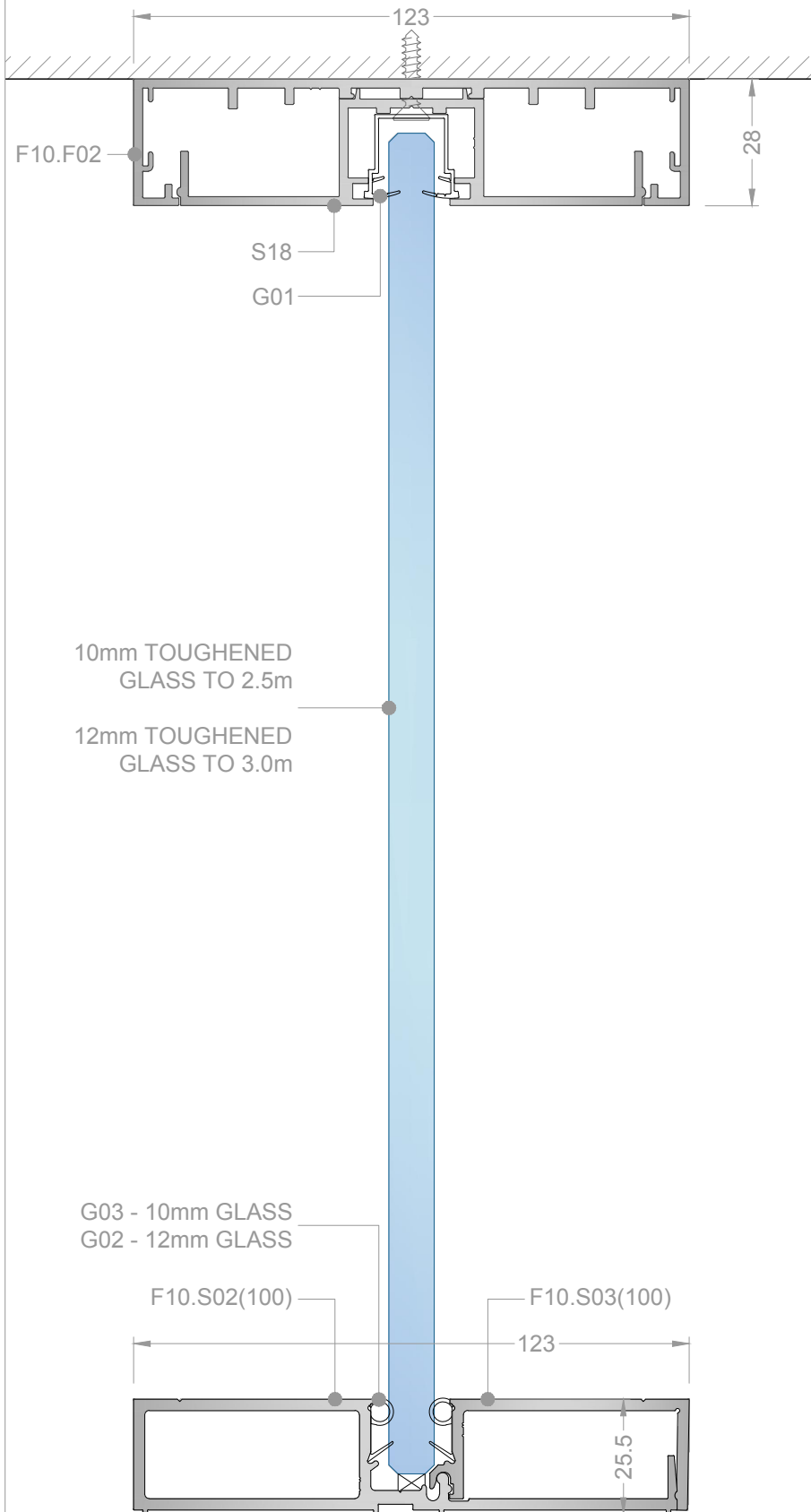
Unit 6, I O Centre,  
Salbrook Road Industrial Estate,  
Salfords, Surrey,  
RH1 5GJ  
T: +44 (0)1293 220970  
E: info@fusionpartitions.com

- Aluminium
- Glass
- Steel
- Gasket
- Timber
- Insulation
- Plasterboard
- Glazing Packer



Do not scale this drawing (printed or electronic versions)  
This drawing is copyright  
Discrepancies and/or ambiguities within this drawing, between  
it and information given elsewhere, must be reported  
immediately to this office for clarification before proceeding.  
All works to be carried out in accordance with the latest  
British Standards/Codes of Practice unless specifically  
directed otherwise in the specification.  
Responsibility for the reproduction of this drawing in paper  
form, or if issued in electronic format, lies with the recipient  
to check that all information has been replicated in full and  
is correct when compared to the original paper or electronic  
image.  
Graphical representations of details on this drawing have  
been co-ordinated, but are approximations only. Please refer  
to Specifications and / or Details for actual sizes.

# FUSION 10 - 100mm



Drawing Title Fusion10-Sgl Glazed  
100mm Head & Base

Scale @ A4 Drawn by S.BM  
NTS  
unless stated

Drawing no. F10-SG100-HB  
Rev. 01  
Date 20/02/17



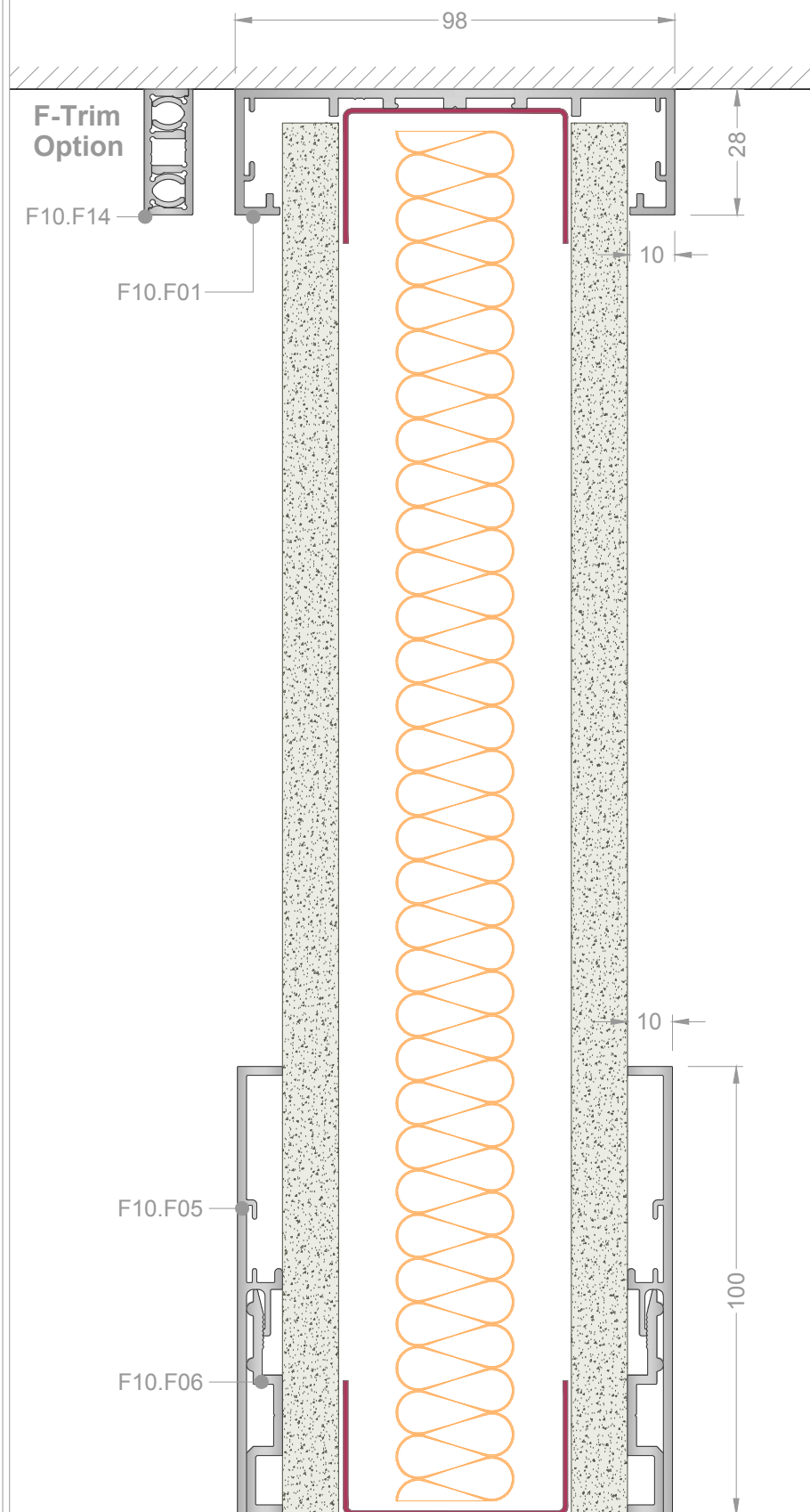
Unit 6, I O Centre,  
Salbrook Road Industrial Estate,  
Salfords, Surrey.  
RH1 5GJ  
T: +44 (0)1293 220970  
E: info@fusionpartitions.com

Aluminium  
Glass  
Steel  
Gasket  
Timber  
Insulation  
Plasterboard  
Glazing Packer



Do not scale this drawing (printed or electronic versions)  
This drawing is copyright  
Discrepancies and/or ambiguities within this drawing, between  
it and information given elsewhere, must be reported  
immediately to this office for clarification before proceeding.  
All works to be carried out in accordance with the latest  
British Standards/Codes of Practice unless specifically  
directed otherwise in the specification.  
Responsibility for the reproduction of this drawing in paper  
form, or if issued in electronic format, lies with the recipient  
to check that all information has been replicated in full and  
is correct when compared to the original paper or electronic  
image.  
Graphical representations of details on this drawing have  
been co-ordinated, but are approximations only. Please refer  
to Specifications and / or Details for actual sizes.

# FUSION 10 - 75mm



Drawing Title  
Fusion10 - Solid  
75mm Head & Base

Scale @ A4  
NTS  
unless stated

Drawn by  
S.BM

Checked  
-

Date  
20/02/17

Rev.  
01

Drawing no.  
F10-SL75-HB

**FusionPartitions**

Unit 6, I O Centre,  
Salbrook Road Industrial Estate,  
Salfords, Surrey,  
RH1 5GJ

T: +44 (0)1293 220970  
E: info@fusionpartitions.com

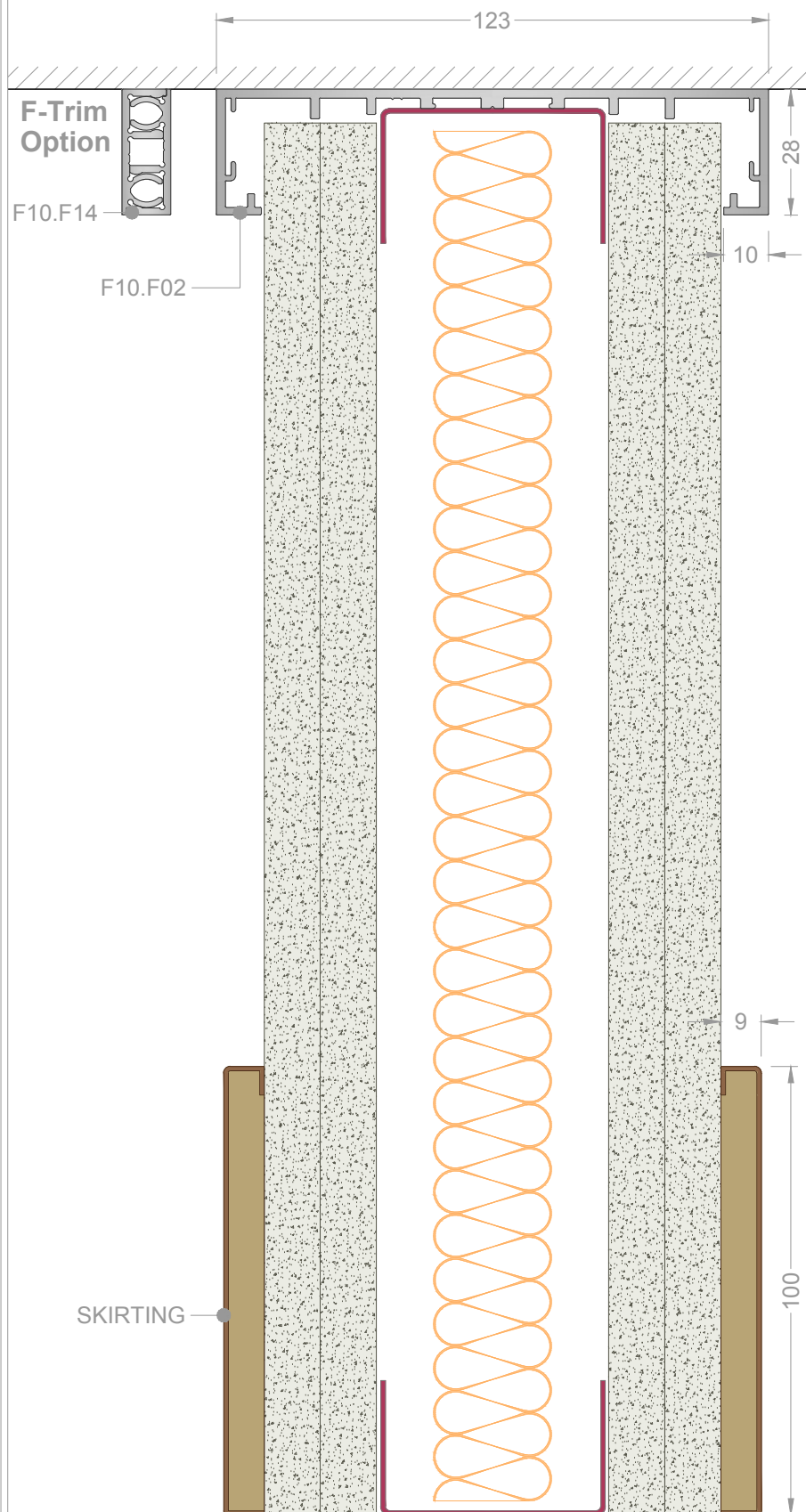
Aluminium  
Glass  
Steel  
Gasket  
Timber  
Insulation  
Plasterboard  
Glazing Packer



Do not scale this drawing (printed or electronic versions)  
This drawing is copyright  
Discrepancies and/or ambiguities within this drawing, between  
it and information given elsewhere, must be reported  
immediately to this office for clarification before proceeding.  
All works to be carried out in accordance with the latest  
British Standards/Codes of Practice unless specifically  
directed otherwise in the specification.  
Responsibility for the reproduction of this drawing in paper  
form, or if issued in electronic format, lies with the recipient  
to check that all information has been replicated in full and  
is correct when compared to the original paper or electronic  
image.  
Graphical representations of details on this drawing have  
been co-ordinated, but are approximations only. Please refer  
to Specifications and / or Details for actual sizes.



# FUSION 10 - 100mm



Drawing Title  
Fusion10 - Solid  
100mm Head & Base

Scale @ A4  
NTS  
unless stated

Drawn by  
S.BM

Checked  
-

Date  
20/02/17

Rev.  
01

Drawing no.  
F10-SL100-HB

**FusionPartitions**

Unit 6, I O Centre,  
Salbrook Road Industrial Estate,  
Salfords, Surrey,  
RH1 5GJ

T: +44 (0)1293 220970  
E: info@fusionpartitions.com

Aluminium  
Glass  
Steel  
Gasket  
Timber  
Insulation  
Plasterboard  
Glazing Packer

nsfpm

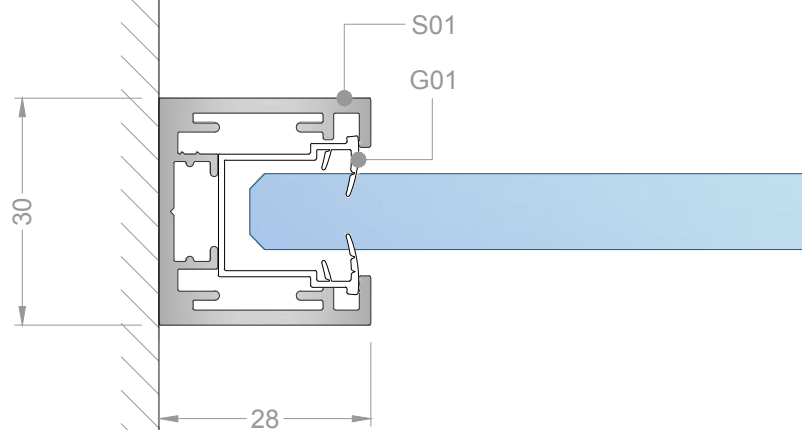
IFC  
ISO 9001:2008

UKAS  
9001

ACCREDITED MEMBER  
FIS

Do not scale this drawing (printed or electronic versions)  
This drawing is copyright  
Discrepancies and/or ambiguities within this drawing, between  
it and information given elsewhere, must be reported  
immediately to this office for clarification before proceeding.  
All works to be carried out in accordance with the latest  
British Standards/Codes of Practice unless specifically  
directed otherwise in the specification.  
Responsibility for the reproduction of this drawing in paper  
form, or if issued in electronic format, lies with the recipient  
to check that all information has been replicated in full and  
is correct when compared to the original paper or electronic  
image.  
Graphical representations of details on this drawing have  
been co-ordinated, but are approximations only. Please refer  
to Specifications and / or Details for actual sizes.

WALL ABUTMENT



Drawing Title Fusion10-Sgl Glazed Head Channel Abutment

Scale @ A4 Drawn by S.BM Checked - Date 20/02/17

Drawing no. F10-SG-HCA

Rev. 01



Unit 6, I O Centre,  
Salbrook Road Industrial Estate,  
Salfords, Surrey,  
RH1 5GJ

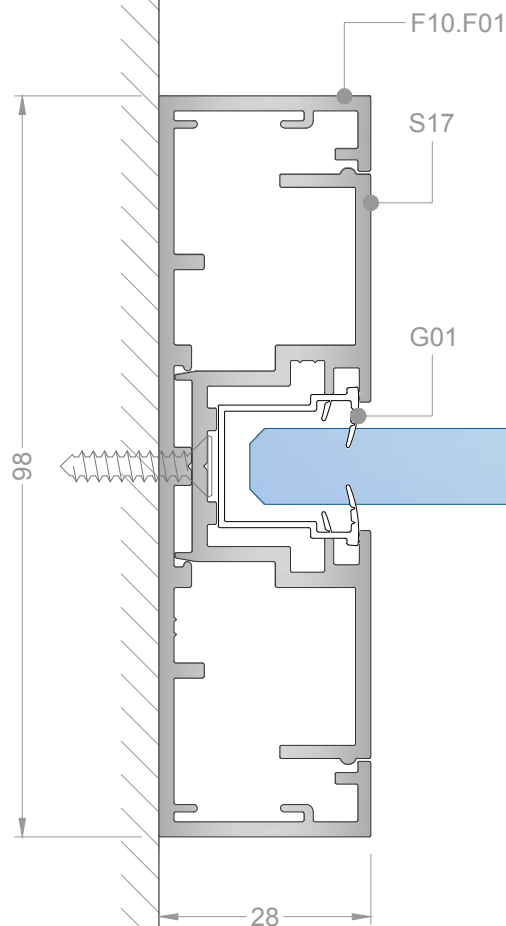
T: +44 (0)1293 220970  
E: info@fusionpartitions.com

- Aluminium
- Glass
- Steel
- Gasket
- Timber
- Insulation
- Plasterboard
- Glazing Packer



Do not scale this drawing (printed or electronic versions)  
This drawing is copyright  
Discrepancies and/or ambiguities within this drawing, between it and information given elsewhere, must be reported immediately to this office for clarification before proceeding.  
All works to be carried out in accordance with the latest British Standards/Codes of Practice unless specifically directed otherwise in the specification.  
Responsibility for the reproduction of this drawing in paper form, or if issued in electronic format, lies with the recipient to check that all information has been replicated in full and is correct when compared to the original paper or electronic image.  
Graphical representations of details on this drawing have been co-ordinated, but are approximations only. Please refer to Specifications and / or Details for actual sizes.

WALL ABUTMENT 75mm



Drawing Title **Fusion10-Sgl Glazed Head Channel Abutment 75mm**  
 Scale @ A4 **1:1**  
 unless stated  
 Drawing no. **F10-SG-HCA75**  
 Drawn by **S.BM**  
 Checked **-**  
 Date **20/02/17**  
 Rev. **01**

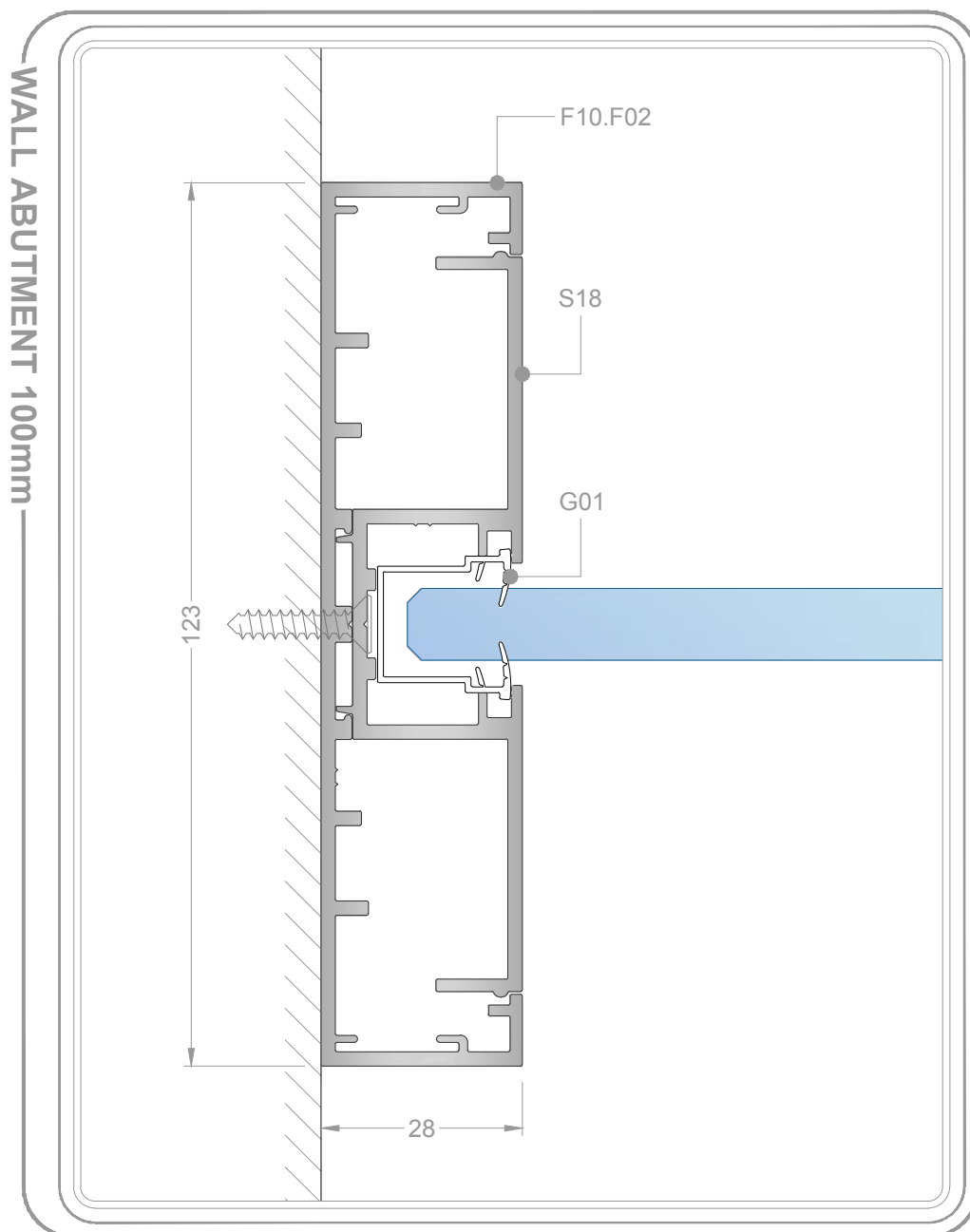
**FusionPartitions**  
 Unit 6, I O Centre,  
 Salbrook Road Industrial Estate,  
 Salfords, Surrey,  
 RH1 5GJ  
 T: +44 (0)1293 220970  
 E: info@fusionpartitions.com

Aluminium  
 Glass  
 Steel  
 Gasket  
 Timber  
 Insulation  
 Plasterboard  
 Glazing Packer



Do not scale this drawing (printed or electronic versions)  
 This drawing is copyright  
 Discrepancies and/or ambiguities within this drawing, between it and information given elsewhere, must be reported immediately to this office for clarification before proceeding.  
 All works to be carried out in accordance with the latest British Standards/Codes of Practice unless specifically directed otherwise in the specification.  
 Responsibility for the reproduction of this drawing in paper form, or if issued in electronic format, lies with the recipient to check that all information has been replicated in full and is correct when compared to the original paper or electronic image.  
 Graphical representations of details on this drawing have been co-ordinated, but are approximations only. Please refer to Specifications and / or Details for actual sizes.





Drawing Title **Fusion10-Sgl Glazed Head Channel Abutment 100mm**  
 Scale @ A4 **1:1**  
 unless stated  
 Drawing no. **F10-SG-HCA100**  
 Drawn by **S.BM**  
 Checked **-**  
 Date **20/02/17**  
 Rev. **01**

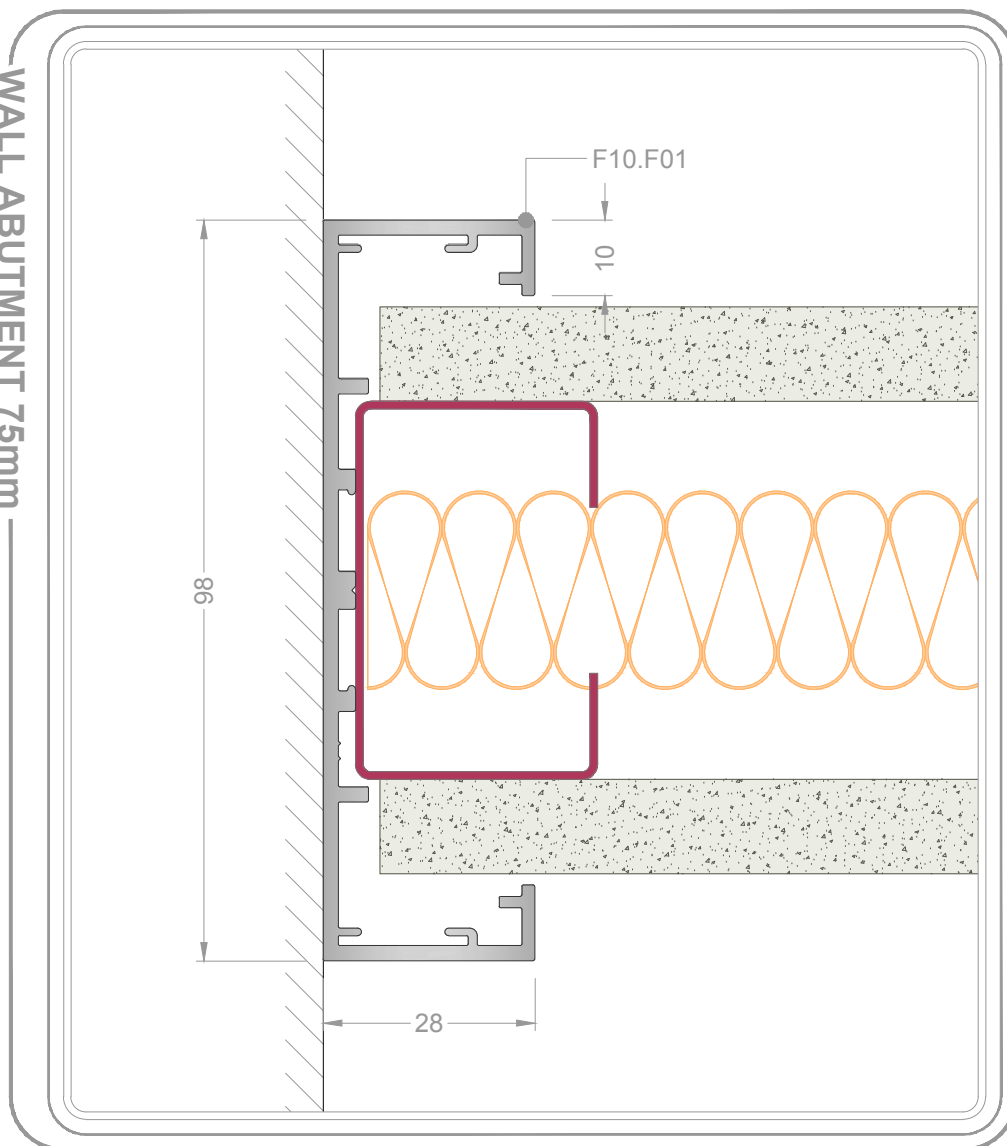
  
**FusionPartitions**  
 Unit 6, I O Centre,  
 Salbrook Road Industrial Estate,  
 Salfords, Surrey,  
 RH1 5GJ  
 T: +44 (0)1293 220970  
 E: info@fusionpartitions.com

Aluminium  
 Glass  
 Steel  
 Gasket  
 Timber  
 Insulation  
 Plasterboard  
 Glazing Packer



Do not scale this drawing (printed or electronic versions)  
 This drawing is copyright  
 Discrepancies and/or ambiguities within this drawing, between it and information given elsewhere, must be reported immediately to this office for clarification before proceeding.  
 All works to be carried out in accordance with the latest British Standards/Codes of Practice unless specifically directed otherwise in the specification.  
 Responsibility for the reproduction of this drawing in paper form, or if issued in electronic format, lies with the recipient to check that all information has been replicated in full and is correct when compared to the original paper or electronic image.  
 Graphical representations of details on this drawing have been co-ordinated, but are approximations only. Please refer to Specifications and / or Details for actual sizes.

WALL ABUTMENT 75mm



Drawing Title  
**Fusion10 - Solid  
75mm Head Channel Abutment**

Scale @ A4  
**1:1**  
unless stated

Drawn by  
**S.BM**

Checked  
-

Date  
**20/02/17**

Rev.  
-

Drawing no.  
**F10-SL75-HCA**

01

  
**FusionPartitions**

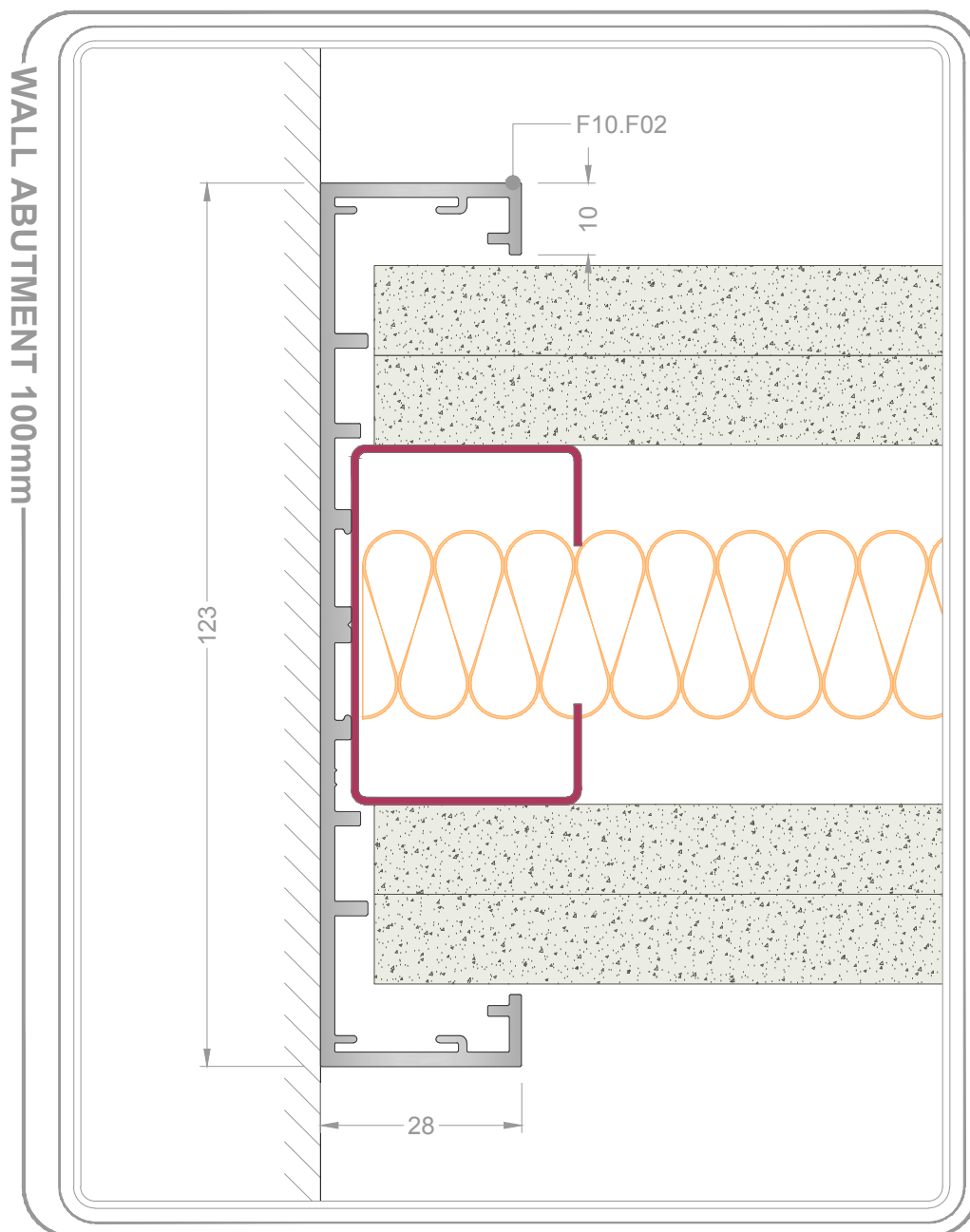
Unit 6, I O Centre,  
Salbrook Road Industrial Estate,  
Salfords, Surrey,  
RH1 5GJ

T: +44 (0)1293 220970  
E: info@fusionpartitions.com

Aluminium  
Glass  
Steel  
Gasket  
Timber  
Insulation  
Plasterboard  
Glazing Packer


Do not scale this drawing (printed or electronic versions)  
This drawing is copyright  
Discrepancies and/or ambiguities within this drawing, between  
it and information given elsewhere, must be reported  
immediately to this office for clarification before proceeding.  
All works to be carried out in accordance with the latest  
British Standards/Codes of Practice unless specifically  
directed otherwise in the specification.  
Responsibility for the reproduction of this drawing in paper  
form, or if issued in electronic format, lies with the recipient  
to check that all information has been replicated in full and  
is correct when compared to the original paper or electronic  
image.  
Graphical representations of details on this drawing have  
been co-ordinated, but are approximations only. Please refer  
to Specifications and / or Details for actual sizes.



Drawing Title **Fusion10 - Solid 100mm Head Channel Abutment**  
 Scale @ A4 **1:1**  
 unless stated  
 Drawing no. **F10-SL100-HCA**  
 Drawn by **S.BM**  
 Checked **-**  
 Date **20/02/17**  
 Rev. **01**

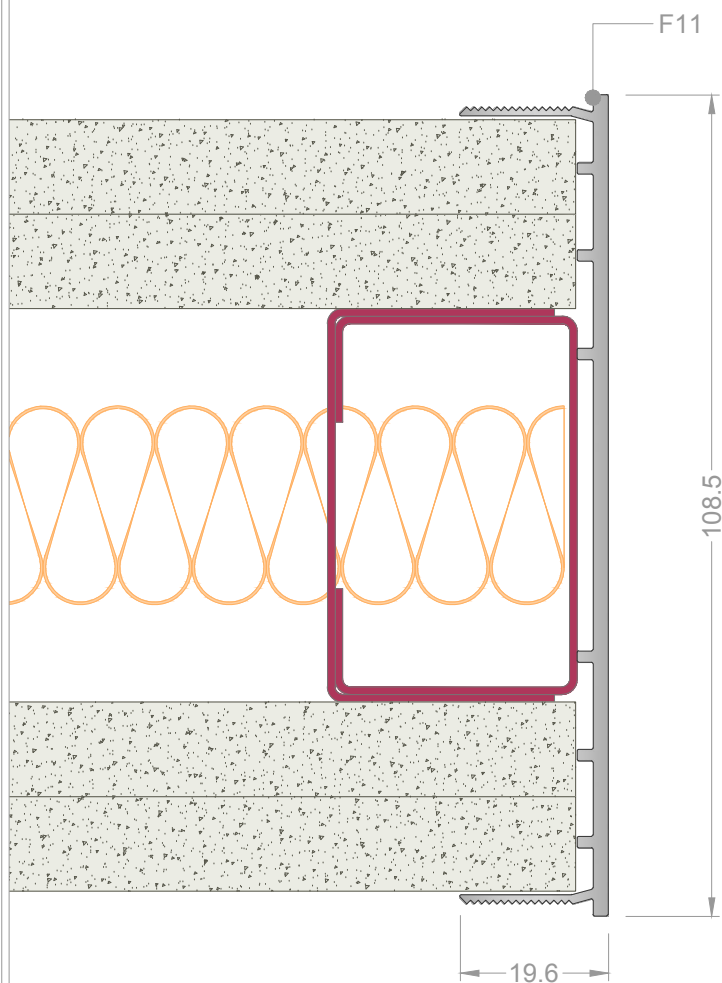
**FusionPartitions**  
 Unit 6, I O Centre,  
 Salbrook Road Industrial Estate,  
 Salfords, Surrey,  
 RH1 5GJ  
 T: +44 (0)1293 220970  
 E: info@fusionpartitions.com

Aluminium  
 Glass  
 Steel  
 Gasket  
 Timber  
 Insulation  
 Plasterboard  
 Glazing Packer

**nsf**  
**IFC**  
**ISO 9001:2008**  
**UKAS**  
**ACCREDITED MEMBER**  
**FIS**

Do not scale this drawing (printed or electronic versions)  
 This drawing is copyright  
 Discrepancies and/or ambiguities within this drawing, between it and information given elsewhere, must be reported immediately to this office for clarification before proceeding.  
 All works to be carried out in accordance with the latest British Standards/Codes of Practice unless specifically directed otherwise in the specification.  
 Responsibility for the reproduction of this drawing in paper form, or if issued in electronic format, lies with the recipient to check that all information has been replicated in full and is correct when compared to the original paper or electronic image.  
 Graphical representations of details on this drawing have been co-ordinated, but are approximations only. Please refer to Specifications and / or Details for actual sizes.

TAPEABLE CONVERSION 100mm



Drawing Title Fusion10 - 100mm  
Tapeable Conversion Fair End  
Scale @ A4  
1:1  
unless stated  
Drawn by S.BM  
Checked -  
Date 20/02/17  
Rev. 01  
Drawing no. F10-TC100FE



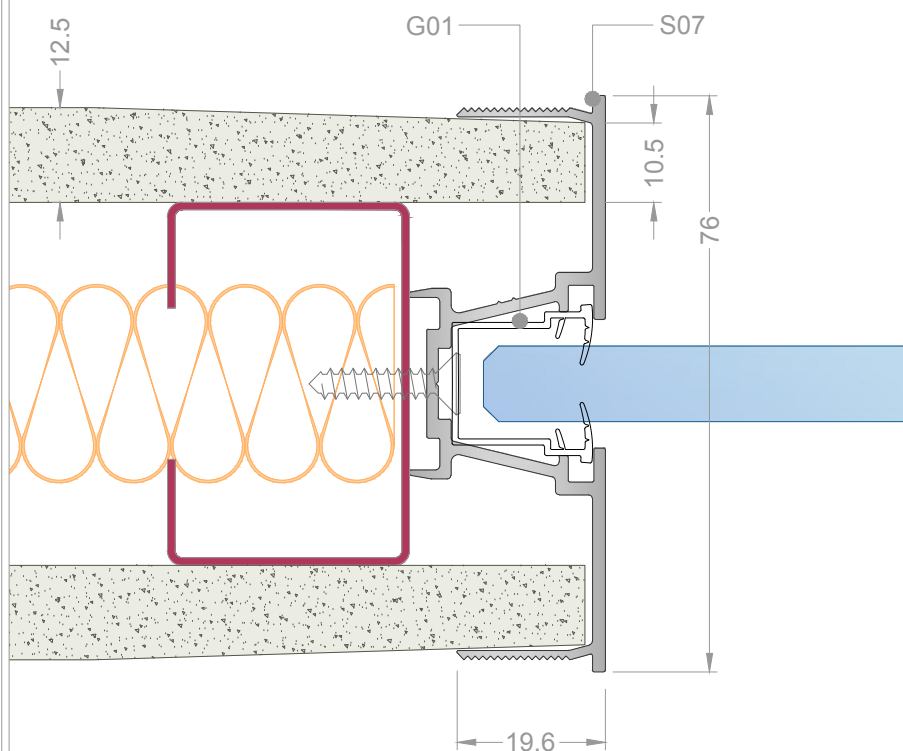
Unit 6, I O Centre,  
Salbrook Road Industrial Estate,  
Salfords, Surrey,  
RH1 5GJ  
T: +44 (0)1293 220970  
E: info@fusionpartitions.com

Aluminium  
Glass  
Steel  
Gasket  
Timber  
Insulation  
Plasterboard  
Glazing Packer



Do not scale this drawing (printed or electronic versions)  
This drawing is copyright  
Discrepancies and/or ambiguities within this drawing, between  
it and information given elsewhere, must be reported  
immediately to this office for clarification before proceeding.  
All works to be carried out in accordance with the latest  
British Standards/Codes of Practice unless specifically  
directed otherwise in the specification.  
Responsibility for the reproduction of this drawing in paper  
form, or if issued in electronic format, lies with the recipient  
to check that all information has been replicated in full and  
is correct when compared to the original paper or electronic  
image.  
Graphical representations of details on this drawing have  
been co-ordinated, but are approximations only. Please refer  
to Specifications and / or Details for actual sizes.

# TAPEABLE CONVERSION 75mm



**NOTE:**  
USE TAPER EDGE BOARD

Drawing Title Fusion10-Sgl Glazed  
Tapeable Conversion 75mm

Scale @ A4 Drawn by S.BM Checked - Date 20/02/17

Drawing no. F10-SG-TC75

Rev. 01



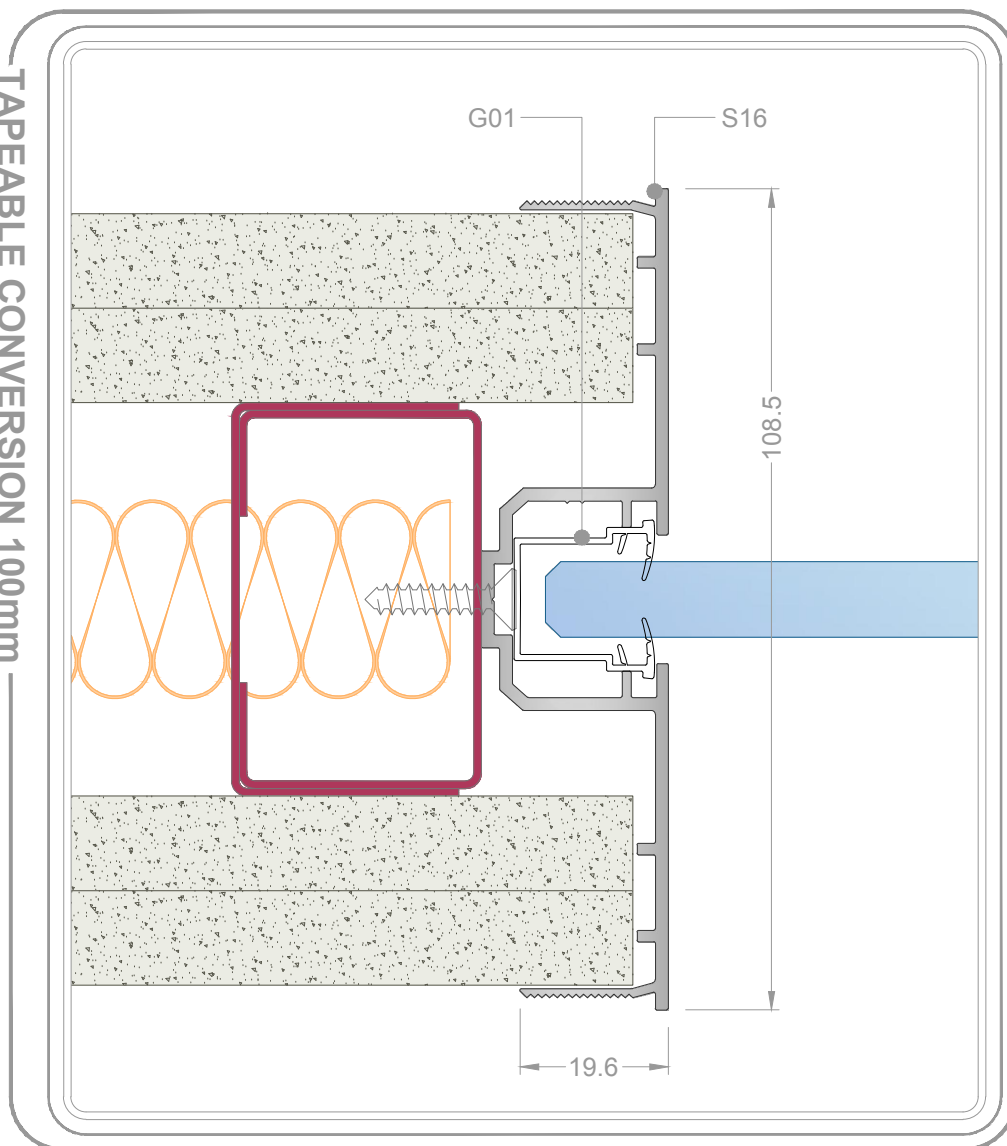
Unit 6, I O Centre,  
Salbrook Road Industrial Estate,  
Salfords, Surrey,  
RH1 5GJ  
T: +44 (0)1293 220970  
E: info@fusionpartitions.com

- Aluminium
- Glass
- Steel
- Gasket
- Timber
- Insulation
- Plasterboard
- Glazing Packer



Do not scale this drawing (printed or electronic versions)  
This drawing is copyright  
Discrepancies and/or ambiguities within this drawing, between  
it and information given elsewhere, must be reported  
immediately to this office for clarification before proceeding.  
All works to be carried out in accordance with the latest  
British Standards/Codes of Practice unless specifically  
directed otherwise in the specification.  
Responsibility for the reproduction of this drawing in paper  
form, or if issued in electronic format, lies with the recipient  
to check that all information has been replicated in full and  
is correct when compared to the original paper or electronic  
image.  
Graphical representations of details on this drawing have  
been co-ordinated, but are approximations only. Please refer  
to Specifications and / or Details for actual sizes.

TAPEABLE CONVERSION 100mm



Drawing Title Fusion10-Sgl Glazed  
Tapeable Conversion 100mm

Scale @ A4 Drawn by S.BM Checked - Date 20/02/17

Drawing no. F10-SG-TC100

Rev. 01



**FusionPartitions**  
Unit 6, I O Centre,  
Salbrook Road Industrial Estate,  
Salfords, Surrey,  
RH1 5GJ  
T: +44 (0)1293 220970  
E: info@fusionpartitions.com

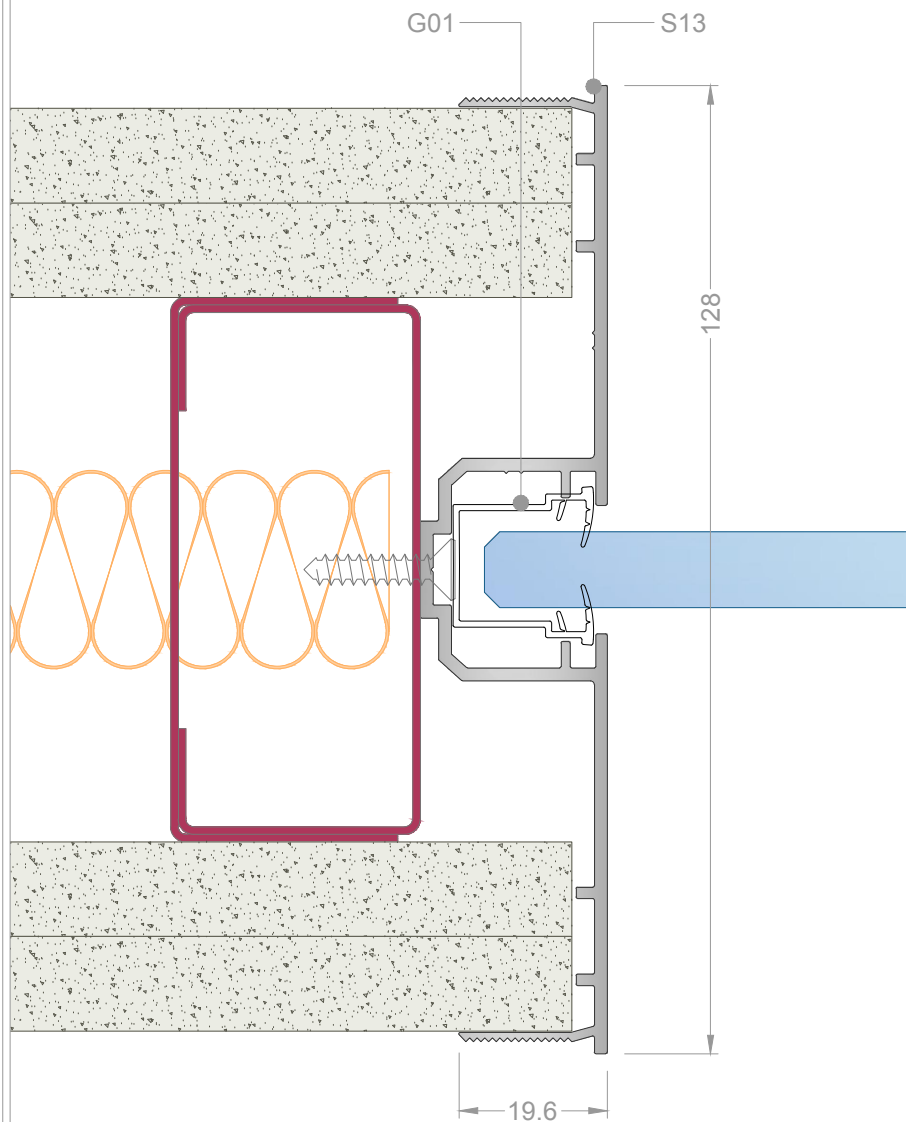
- Aluminium
- Glass
- Steel
- Gasket
- Timber
- Insulation
- Plasterboard
- Glazing Packer



Do not scale this drawing (printed or electronic versions)  
This drawing is copyright  
Discrepancies and/or ambiguities within this drawing, between  
it and information given elsewhere, must be reported  
immediately to this office for clarification before proceeding.  
All works to be carried out in accordance with the latest  
British Standards/Codes of Practice unless specifically  
directed otherwise in the specification.  
Responsibility for the reproduction of this drawing in paper  
form, or if issued in electronic format, lies with the recipient  
to check that all information has been replicated in full and  
is correct when compared to the original paper or electronic  
image.  
Graphical representations of details on this drawing have  
been co-ordinated, but are approximations only. Please refer  
to Specifications and / or Details for actual sizes.



TAPEABLE CONVERSION 122mm



Drawing Title Fusion10-Sgl Glazed  
Tapeable Conversion 122mm

Scale @ A4 Drawn by S.BM  
1:1  
unless stated

Drawing no. F10-SG-TC122  
Rev. 01



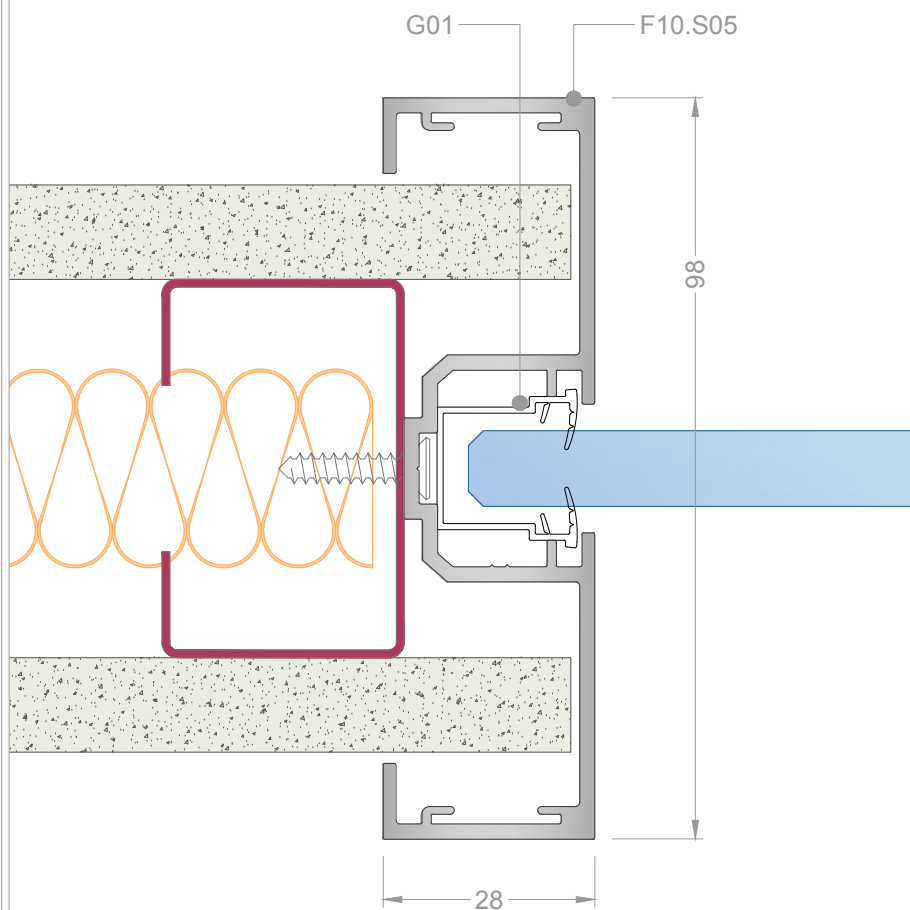
Unit 6, I O Centre,  
Salbrook Road Industrial Estate,  
Salfords, Surrey.  
RH1 5GJ  
T: +44 (0)1293 220970  
E: info@fusionpartitions.com

- Aluminium
- Glass
- Steel
- Gasket
- Timber
- Insulation
- Plasterboard
- Glazing Packer



Do not scale this drawing (printed or electronic versions)  
This drawing is copyright  
Discrepancies and/or ambiguities within this drawing, between it and information given elsewhere, must be reported immediately to this office for clarification before proceeding.  
All works to be carried out in accordance with the latest British Standards/Codes of Practice unless specifically directed otherwise in the specification.  
Responsibility for the reproduction of this drawing in paper form, or if issued in electronic format, lies with the recipient to check that all information has been replicated in full and is correct when compared to the original paper or electronic image.  
Graphical representations of details on this drawing have been co-ordinated, but are approximations only. Please refer to Specifications and / or Details for actual sizes.

REDUCER POST 75mm



Drawing Title **Fusion10-Sgl Glazed Reducer Post 75mm**  
 Scale @ A4 **1:1**  
 unless stated  
 Drawing no. **F10-SG-RP75**  
 Drawn by **S.BM**  
 Checked **-**  
 Date **20/02/17**  
 Rev. **01**



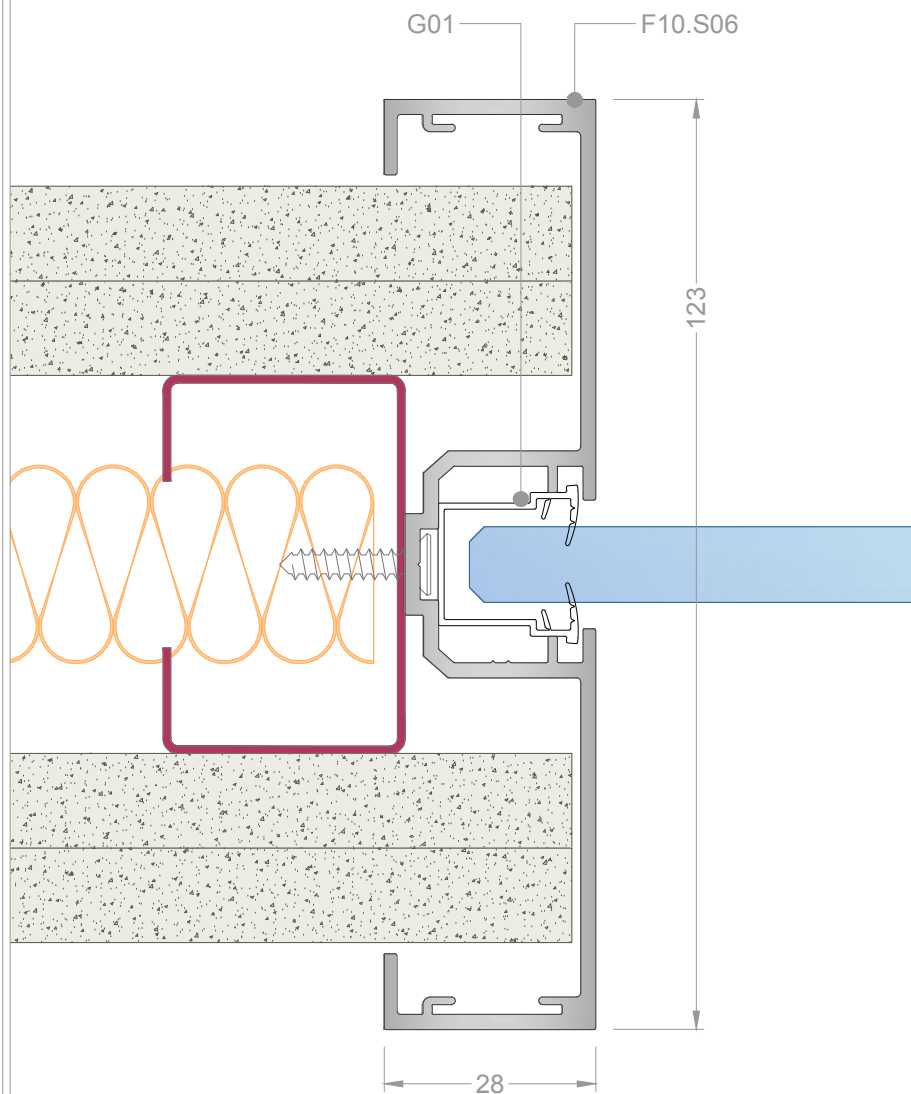
**FusionPartitions**  
 Unit 6, I O Centre,  
 Salbrook Road Industrial Estate,  
 Salfords, Surrey,  
 RH1 5GJ  
 T: +44 (0)1293 220970  
 E: info@fusionpartitions.com

- Aluminium
- Glass
- Steel
- Gasket
- Timber
- Insulation
- Plasterboard
- Glazing Packer



Do not scale this drawing (printed or electronic versions)  
 This drawing is copyright  
 Discrepancies and/or ambiguities within this drawing, between it and information given elsewhere, must be reported immediately to this office for clarification before proceeding.  
 All works to be carried out in accordance with the latest British Standards/Codes of Practice unless specifically directed otherwise in the specification.  
 Responsibility for the reproduction of this drawing in paper form, or if issued in electronic format, lies with the recipient to check that all information has been replicated in full and is correct when compared to the original paper or electronic image.  
 Graphical representations of details on this drawing have been co-ordinated, but are approximations only. Please refer to Specifications and / or Details for actual sizes.

REDUCER POST 100mm



Drawing Title Fusion10-Sgl Glazed Reducer Post 100mm

Scale @ A4 Drawn by S.BM Checked - Date 20/02/17

Drawing no. F10-SG-RP100 Rev. 01



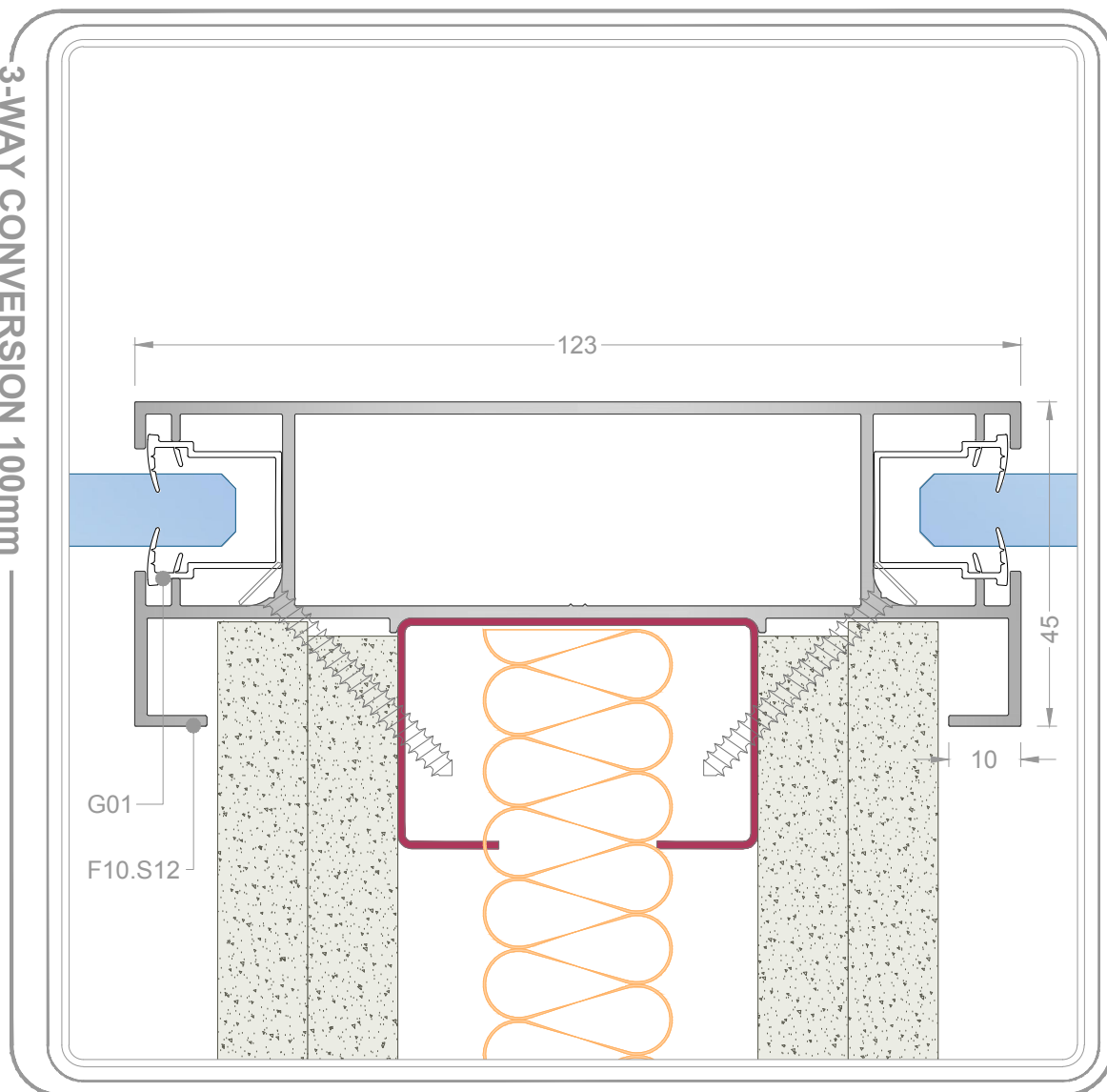
Unit 6, I O Centre,  
Salbrook Road Industrial Estate,  
Salfords, Surrey,  
RH1 5GJ  
T: +44 (0)1293 220970  
E: info@fusionpartitions.com

- Aluminium
- Glass
- Steel
- Gasket
- Timber
- Insulation
- Plasterboard
- Glazing Packer



Do not scale this drawing (printed or electronic versions)  
This drawing is copyright  
Discrepancies and/or ambiguities within this drawing, between it and information given elsewhere, must be reported immediately to this office for clarification before proceeding.  
All works to be carried out in accordance with the latest British Standards/Codes of Practice unless specifically directed otherwise in the specification.  
Responsibility for the reproduction of this drawing in paper form, or if issued in electronic format, lies with the recipient to check that all information has been replicated in full and is correct when compared to the original paper or electronic image.  
Graphical representations of details on this drawing have been co-ordinated, but are approximations only. Please refer to Specifications and / or Details for actual sizes.

# 3-WAY CONVERSION 100mm



Drawing Title Fusion10-Sgl Glazed  
3-Way Conversion 100mm

Scale @ A4 Drawn by S.BM Checked - Date 20/02/17

1:1 unless stated

Drawing no. F10-SG-3W100 Rev. 01



Unit 6, I O Centre,  
Salbrook Road Industrial Estate,  
Salfords, Surrey,  
RH1 5GJ  
T: +44 (0)1293 220970  
E: info@fusionpartitions.com

- Aluminium
- Glass
- Steel
- Gasket
- Timber
- Insulation
- Plasterboard
- Glazing Packer

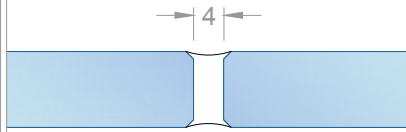


Do not scale this drawing (printed or electronic versions)  
This drawing is copyright  
Discrepancies and/or ambiguities within this drawing, between it and information given elsewhere, must be reported immediately to this office for clarification before proceeding.  
All works to be carried out in accordance with the latest British Standards/Codes of Practice unless specifically directed otherwise in the specification.  
Responsibility for the reproduction of this drawing in paper form, or if issued in electronic format, lies with the recipient to check that all information has been replicated in full and is correct when compared to the original paper or electronic image.  
Graphical representations of details on this drawing have been co-ordinated, but are approximations only. Please refer to Specifications and / or Details for actual sizes.

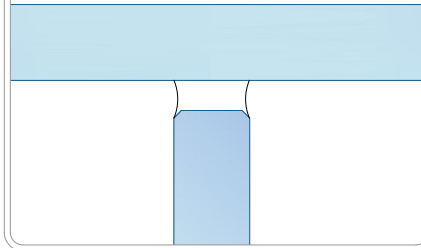
# GLASS JOINT

## SILICONE JOINTED

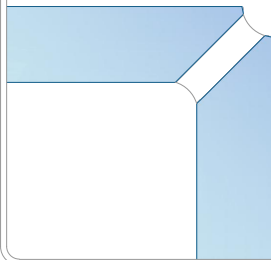
### STRAIGHT



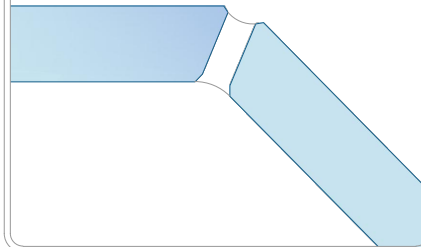
### 3-WAY



### 90-DEG

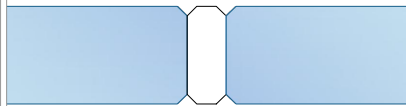


### VARIABLE

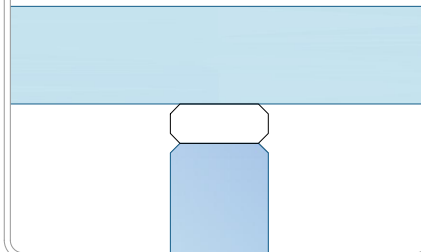


## DRY JOINTED

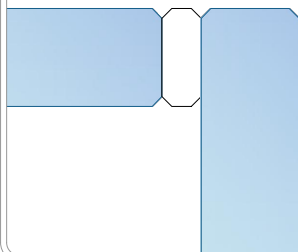
### STRAIGHT



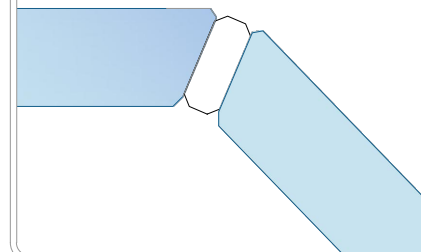
### 3-WAY



### 90-DEG



### VARIABLE



Drawing Title **Clear Single Glazed Glass Joints**

Scale @ A4 **1:1** unless stated  
Drawn by **S.BM**  
Checked **-**  
Date **20/02/17**

Drawing no. **CSG-GJ**  
Rev. **01**



**FusionPartitions**  
Unit 6, I O Centre,  
Salbrook Road Industrial Estate,  
Salfords, Surrey,  
RH1 5GJ  
T: +44 (0)1293 220970  
E: info@fusionpartitions.com

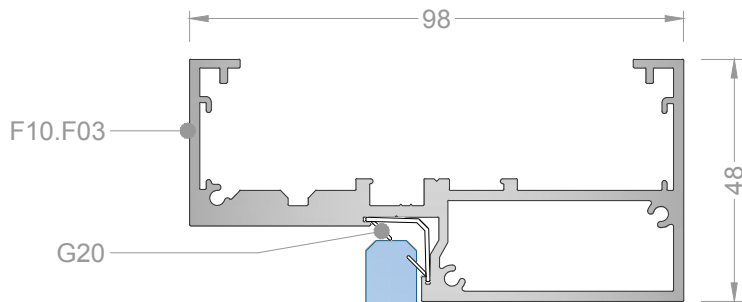
- Aluminium
- Glass
- Steel
- Gasket
- Timber
- Insulation
- Plasterboard
- Glazing Packer



Do not scale this drawing (printed or electronic versions)  
This drawing is copyright  
Discrepancies and/or ambiguities within this drawing, between it and information given elsewhere, must be reported immediately to this office for clarification before proceeding.  
All works to be carried out in accordance with the latest British Standards/Codes of Practice unless specifically directed otherwise in the specification.  
Responsibility for the reproduction of this drawing in paper form, or if issued in electronic format, lies with the recipient to check that all information has been replicated in full and is correct when compared to the original paper or electronic image.  
Graphical representations of details on this drawing have been co-ordinated, but are approximations only. Please refer to Specifications and / or Details for actual sizes.

VERTICAL HEAD

# FUSION10 - 75mm DOORFRAME



REFER TO FUSION  
TECHNICAL  
DEPARTMENT  
FOR SPECIFICATION

Drawing Title Door Frame-Fusion10  
Vertical Head 75mm

Scale @ A4  
NTS  
unless stated

Drawn by  
S.BM

Checked  
-

Date  
20/02/17

Drawing no.  
DF-F10-VH75

Rev.  
01



**FusionPartitions**  
Unit 6, I O Centre,  
Salbrook Road Industrial Estate,  
Salfords, Surrey,  
RH1 5GJ

T: +44 (0)1293 220970  
E: info@fusionpartitions.com

- Aluminium
- Glass
- Steel
- Gasket
- Timber
- Insulation
- Plasterboard
- Glazing Packer

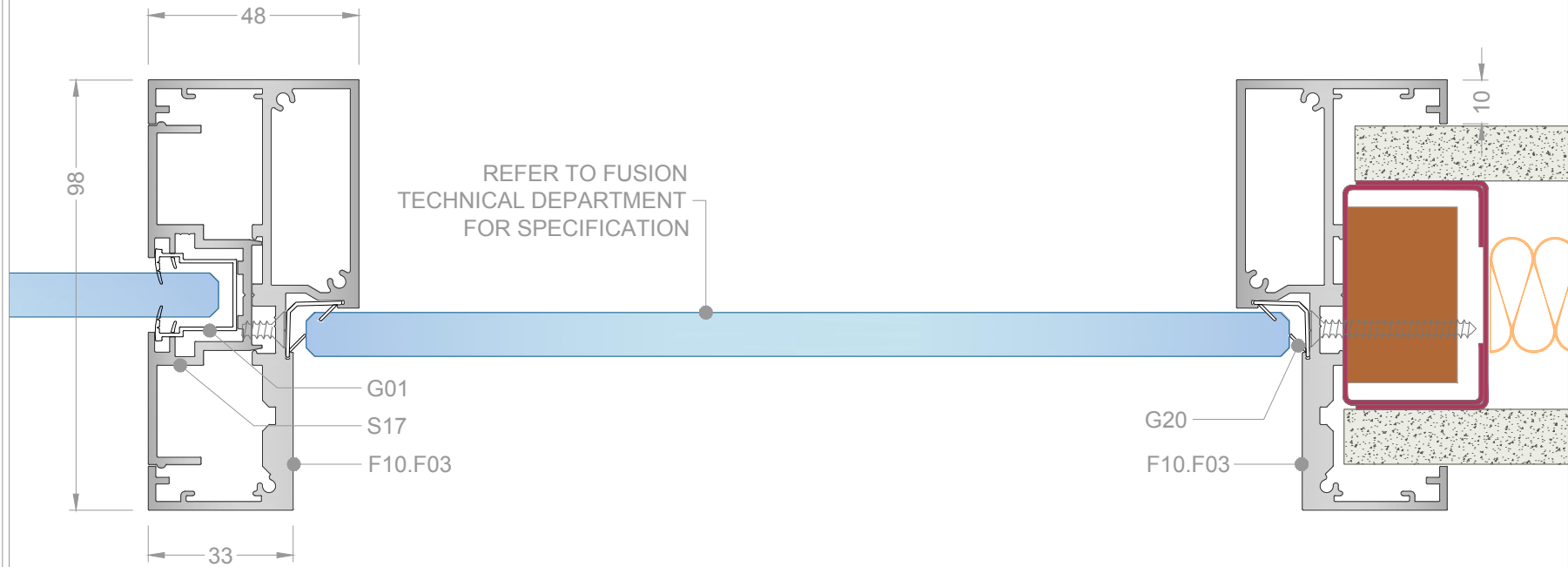


Do not scale this drawing (printed or electronic versions)  
This drawing is copyright  
Discrepancies and/or ambiguities within this drawing, between  
it and information given elsewhere, must be reported  
immediately to this office for clarification before proceeding.  
All works to be carried out in accordance with the latest  
British Standards/Codes of Practice unless specifically  
directed otherwise in the specification.  
Responsibility for the reproduction of this drawing in paper  
form, or if issued in electronic format, lies with the recipient  
to check that all information has been replicated in full and  
is correct when compared to the original paper or electronic  
image.  
Graphical representations of details on this drawing have  
been co-ordinated, but are approximations only. Please refer  
to Specifications and / or Details for actual sizes.



HORIZONTAL JAMB

# FUSION10 - 75mm DOORFRAME



Drawing Title Door Frame-Fusion10  
S/Giz Horizontal Jamb 75mm

Scale @ A4 Drawn by S.BM Checked - Date 20/02/17

Drawing no. DF-F10-SG-HJ75 Rev. 01

**FusionPartitions**  
Unit 6, I O Centre,  
Salbrook Road Industrial Estate,  
Salfords, Surrey,  
RH1 5GJ  
T: +44 (0)1293 220970  
E: info@fusionpartitions.com

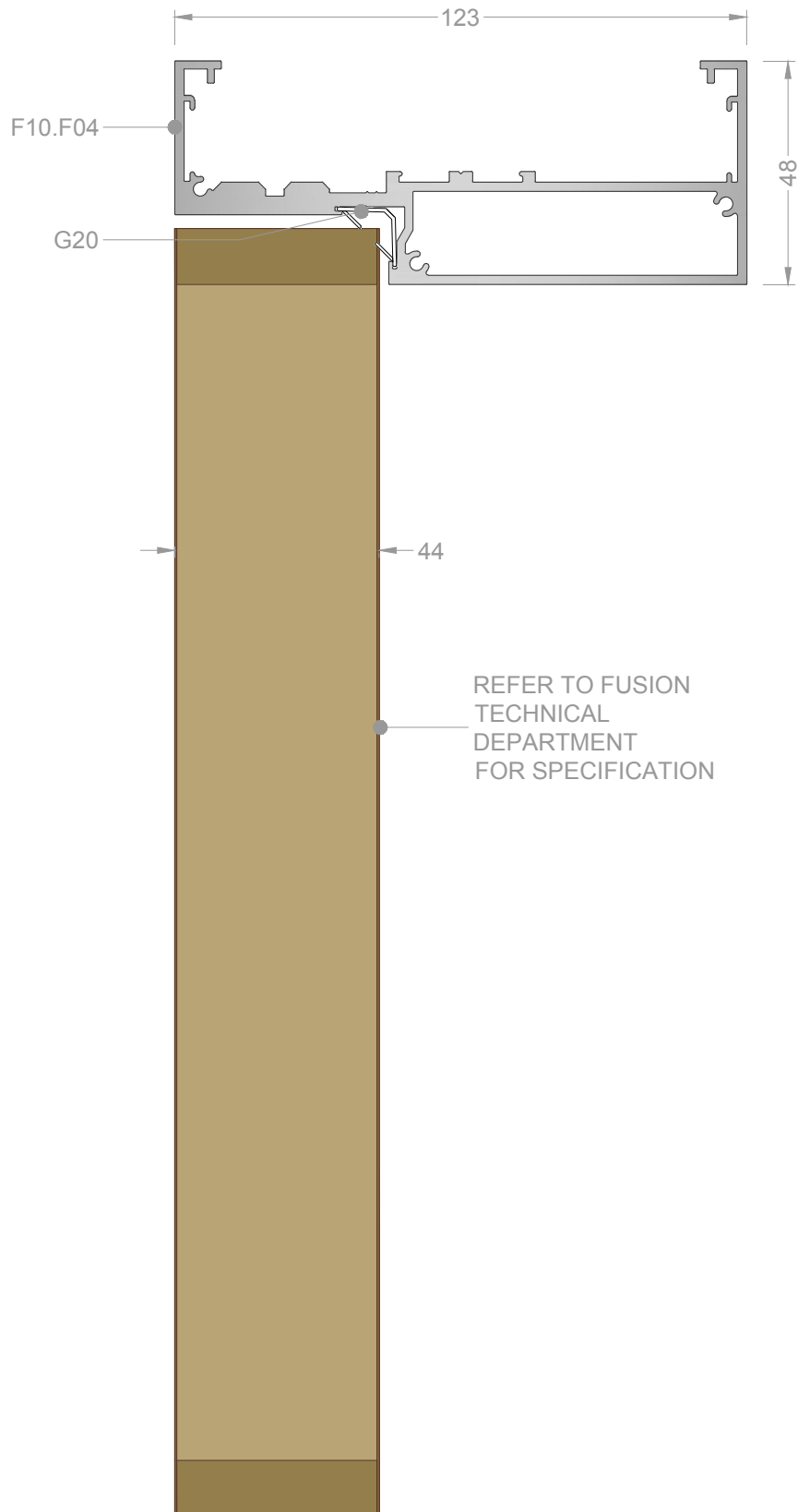
- Aluminium
- Glass
- Steel
- Gasket
- Timber
- Insulation
- Plasterboard
- Glazing Packer



Do not scale this drawing (printed or electronic versions)  
This drawing is copyright  
Discrepancies and/or ambiguities within this drawing, between it and information given elsewhere, must be reported immediately to this office for clarification before proceeding.  
All works to be carried out in accordance with the latest British Standards/Codes of Practice unless specifically directed otherwise in the specification.  
Responsibility for the reproduction of this drawing in paper form, or if issued in electronic format, lies with the recipient to check that all information has been replicated in full and is correct when compared to the original paper or electronic image.  
Graphical representations of details on this drawing have been co-ordinated, but are approximations only. Please refer to Specifications and / or Details for actual sizes.

VERTICAL HEAD

## FUSION10 - 100mm DOORFRAME



Drawing Title Door Frame-Fusion10  
Vertical Head 100mm

Scale @ A4  
NTS  
unless stated

Drawn by  
S.BM

Checked  
-

Date  
20/02/17

Drawing no.  
DF-F10-VH100

Rev.  
01



**FusionPartitions**  
Unit 6, I O Centre,  
Salbrook Road Industrial Estate,  
Salfords, Surrey,  
RH1 5GJ

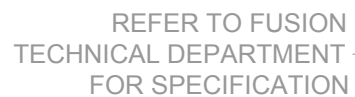
T: +44 (0)1293 220970  
E: info@fusionpartitions.com

- Aluminium
- Glass
- Steel
- Gasket
- Timber
- Insulation
- Plasterboard
- Glazing Packer



Do not scale this drawing (printed or electronic versions)  
This drawing is copyright  
Discrepancies and/or ambiguities within this drawing, between  
it and information given elsewhere, must be reported  
immediately to this office for clarification before proceeding.  
All works to be carried out in accordance with the latest  
British Standards/Codes of Practice unless specifically  
directed otherwise in the specification.  
Responsibility for the reproduction of this drawing in paper  
form, or if issued in electronic format, lies with the recipient  
to check that all information has been replicated in full and  
is correct when compared to the original paper or electronic  
image.  
Graphical representations of details on this drawing have  
been co-ordinated, but are approximations only. Please refer  
to Specifications and / or Details for actual sizes.

## FUSION10 - 100mm DOORFRAME



Do not scale this drawing (printed or electronic versions)

This drawing is copyright

Discrepancies and/or ambiguities within this drawing, between it and information given elsewhere, must be reported immediately to this office for clarification before proceeding.

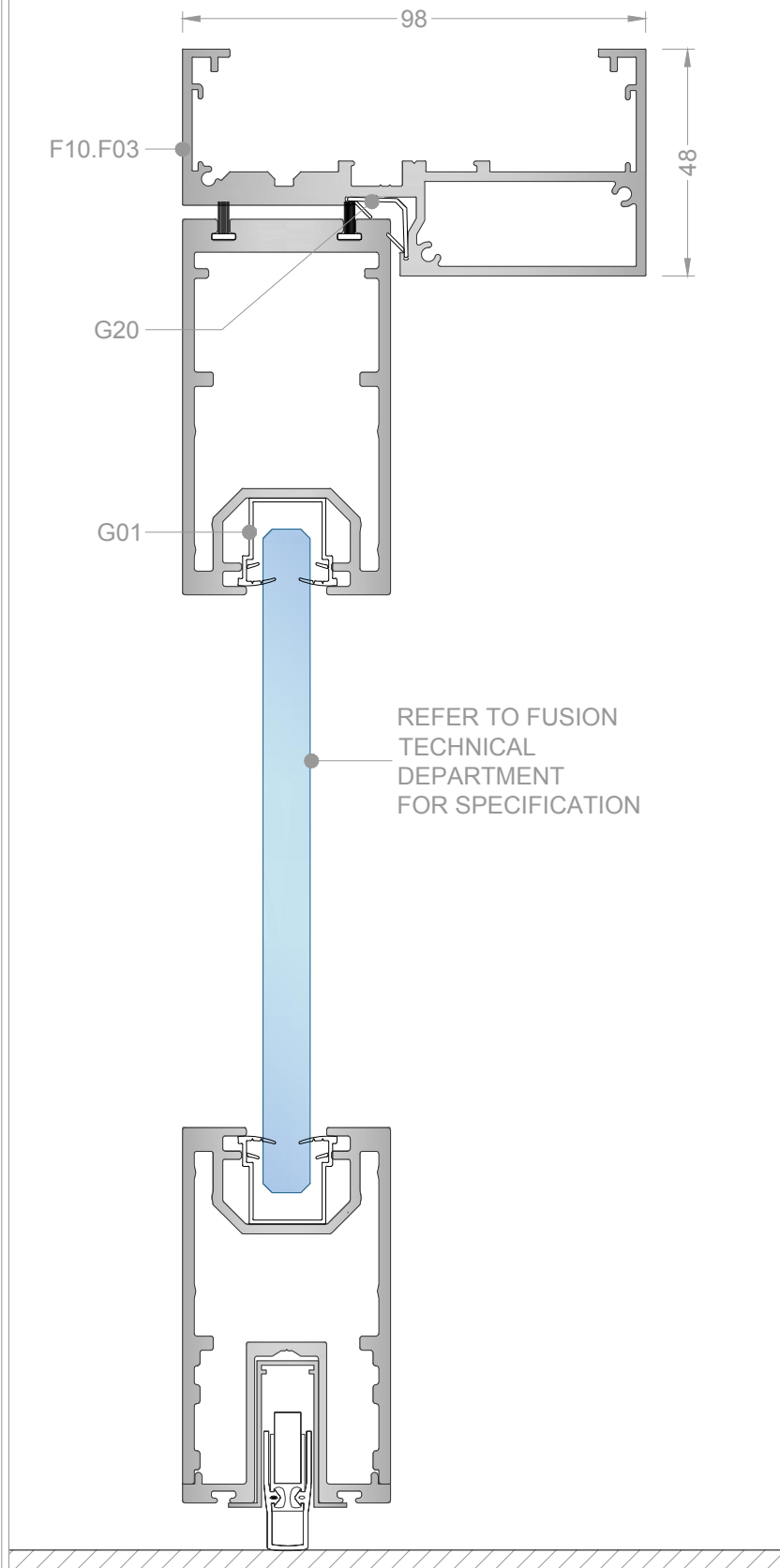
All works to be carried out in accordance with the latest British Standards/Codes of Practice unless specifically directed otherwise in the specification.

Responsibility for the reproduction of this drawing in paper form, or if issued in electronic format, lies with the recipient to check that all information has been replicated in full and is correct when compared to the original paper or electronic image.

Graphical representations of details on this drawing have been co-ordinated, but are approximations only. Please refer to Specifications and / or Details for actual sizes.

VERTICAL HEAD

## SINGLE GLAZED DOOR



Drawing Title Door Frame Vert Head  
- Comtempo Sgl Glazed Door

Scale @ A4 Drawn by NTS S.BM  
unless stated Date

Drawing no. DF-F10-VHCNS  
Rev. 01



**FusionPartitions**  
Unit 6, I O Centre,  
Salbrook Road Industrial Estate,  
Salfords, Surrey,  
RH1 5GJ  
T: +44 (0)1293 220970  
E: info@fusionpartitions.com

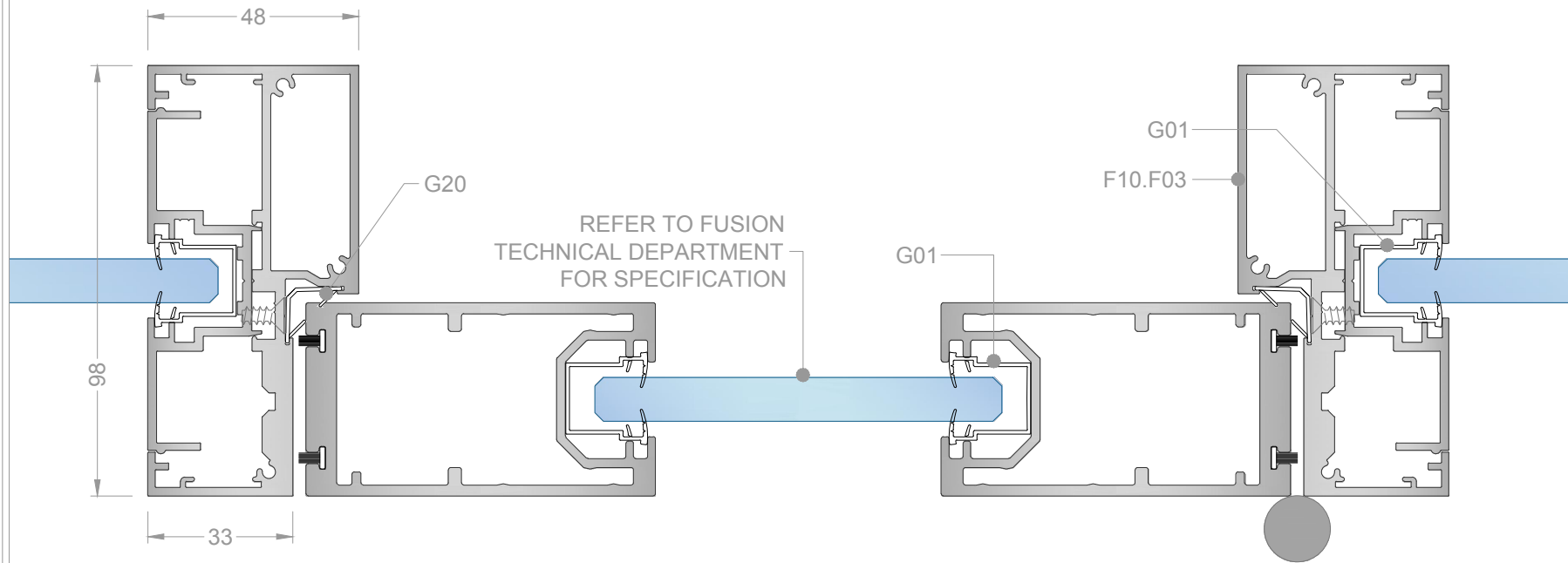
- Aluminium
- Glass
- Steel
- Gasket
- Timber
- Insulation
- Plasterboard
- Glazing Packer



Do not scale this drawing (printed or electronic versions)  
This drawing is copyright  
Discrepancies and/or ambiguities within this drawing, between  
it and information given elsewhere, must be reported  
immediately to this office for clarification before proceeding.  
All works to be carried out in accordance with the latest  
British Standards/Codes of Practice unless specifically  
directed otherwise in the specification.  
Responsibility for the reproduction of this drawing in paper  
form, or if issued in electronic format, lies with the recipient  
to check that all information has been replicated in full and  
is correct when compared to the original paper or electronic  
image.  
Graphical representations of details on this drawing have  
been co-ordinated, but are approximations only. Please refer  
to Specifications and / or Details for actual sizes.

HORIZONTAL JAMB

# SINGLE GLAZED DOOR



Drawing Title: Door Frame Horz Jamb  
- Contempo Sgl Glazed Door

Scale @ A4  
NTS  
unless stated

Drawn by  
S.BM

Checked

Date  
20/02/17

Drawing no.  
DF-F10-HJCNS

Rev.  
01

**FusionPartitions**  
Unit 6, I O Centre,  
Salbrook Road Industrial Estate,  
Salisbury, Wiltshire, RH1 5GJ  
T: +44 (0)1293 220970  
E: info@fusionpartitions.com

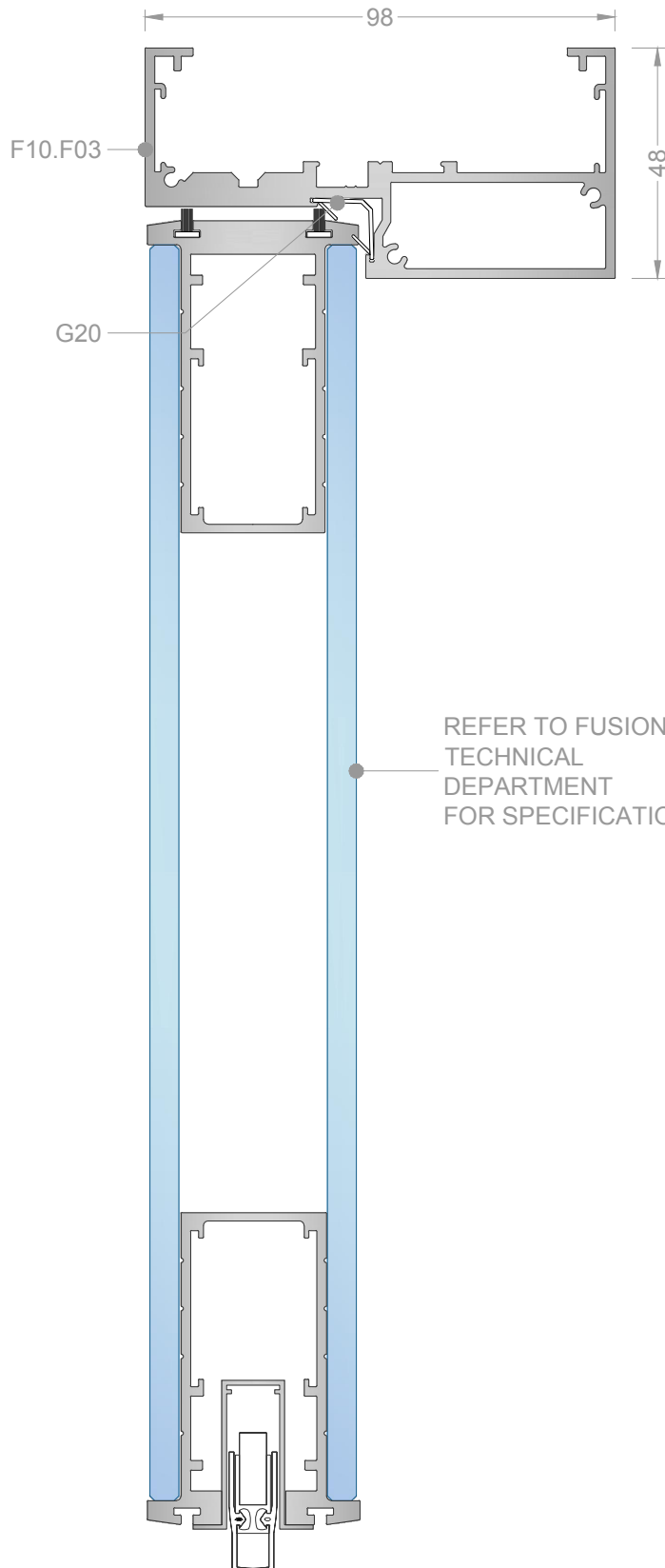
- Aluminium
- Glass
- Steel
- Gasket
- Timber
- Insulation
- Plasterboard
- Glazing Packer



Do not scale this drawing (printed or electronic versions)  
This drawing is copyright  
Discrepancies and/or ambiguities within this drawing, between it and information given elsewhere, must be reported immediately to this office for clarification before proceeding.  
All works to be carried out in accordance with the latest British Standards/Codes of Practice unless specifically directed otherwise in the specification.  
Responsibility for the reproduction of this drawing in paper form, or if issued in electronic format, lies with the recipient to check that all information has been replicated in full and is correct when compared to the original paper or electronic image.  
Graphical representations of details on this drawing have been co-ordinated, but are approximations only. Please refer to Specifications and / or Details for actual sizes.

VERTICAL HEAD

## DOUBLE GLAZED DOOR



REFER TO FUSION  
TECHNICAL  
DEPARTMENT  
FOR SPECIFICATION

Drawing Title Door Frame Vert Head  
- Comtempo Dbl Glazed Door

Scale @ A4 Drawn by NTS S.BM  
unless stated

Drawing no. DF-F10-VHCND

Rev. 01



**FusionPartitions**

Unit 6, I O Centre,  
Salbrook Road Industrial Estate,  
Salfords, Surrey,  
RH1 5GJ  
T: +44 (0)1293 220970  
E: info@fusionpartitions.com

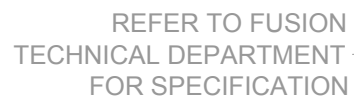
- Aluminium
- Glass
- Steel
- Gasket
- Timber
- Insulation
- Plasterboard
- Glazing Packer



Do not scale this drawing (printed or electronic versions)  
This drawing is copyright  
Discrepancies and/or ambiguities within this drawing, between  
it and information given elsewhere, must be reported  
immediately to this office for clarification before proceeding.  
All works to be carried out in accordance with the latest  
British Standards/Codes of Practice unless specifically  
directed otherwise in the specification.  
Responsibility for the reproduction of this drawing in paper  
form, or if issued in electronic format, lies with the recipient  
to check that all information has been replicated in full and  
is correct when compared to the original paper or electronic  
image.  
Graphical representations of details on this drawing have  
been co-ordinated, but are approximations only. Please refer  
to Specifications and / or Details for actual sizes.



**DOUBLE GLAZED DOOR**



Do not scale this drawing (printed or electronic versions)

This drawing is copyright

Discrepancies and/or ambiguities within this drawing, between it and information given elsewhere, must be reported immediately to this office for clarification before proceeding.

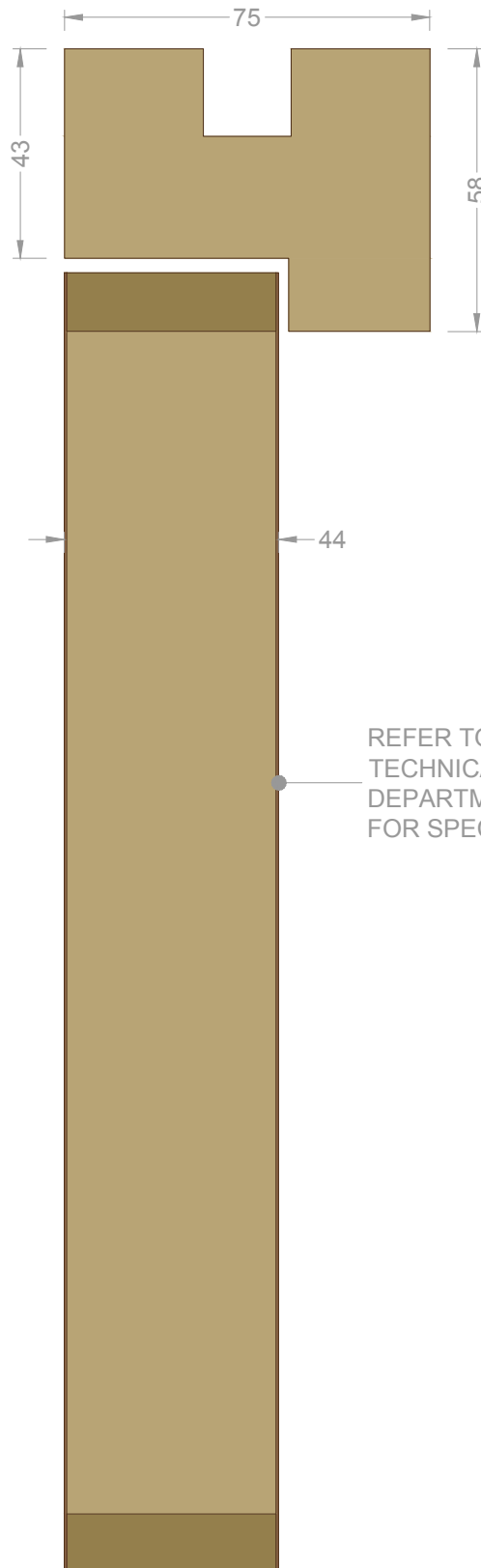
All works to be carried out in accordance with the latest British Standards/Codes of Practice unless specifically directed otherwise in the specification.

Responsibility for the reproduction of this drawing in paper form, or if issued in electronic format, lies with the recipient to check that all information has been replicated in full and is correct when compared to the original paper or electronic image.

Graphical representations of details on this drawing have been co-ordinated, but are approximations only. Please refer to Specifications and / or Details for actual sizes.

VERTICAL HEAD

## TIMBER DOORFRAME



REFER TO FUSION  
TECHNICAL  
DEPARTMENT  
FOR SPECIFICATION

Drawing Title  
**Door Frame  
Vertical Head - Timber**

Scale @ A4  
NTS  
unless stated

Drawn by  
S.BM

Checked  
-

Date  
20/02/17

Drawing no.  
DF-SG-VHTDF

Rev.  
01

**FusionPartitions**

Unit 6, I O Centre,  
Salbrook Road Industrial Estate,  
Salfords, Surrey,  
RH1 5GJ

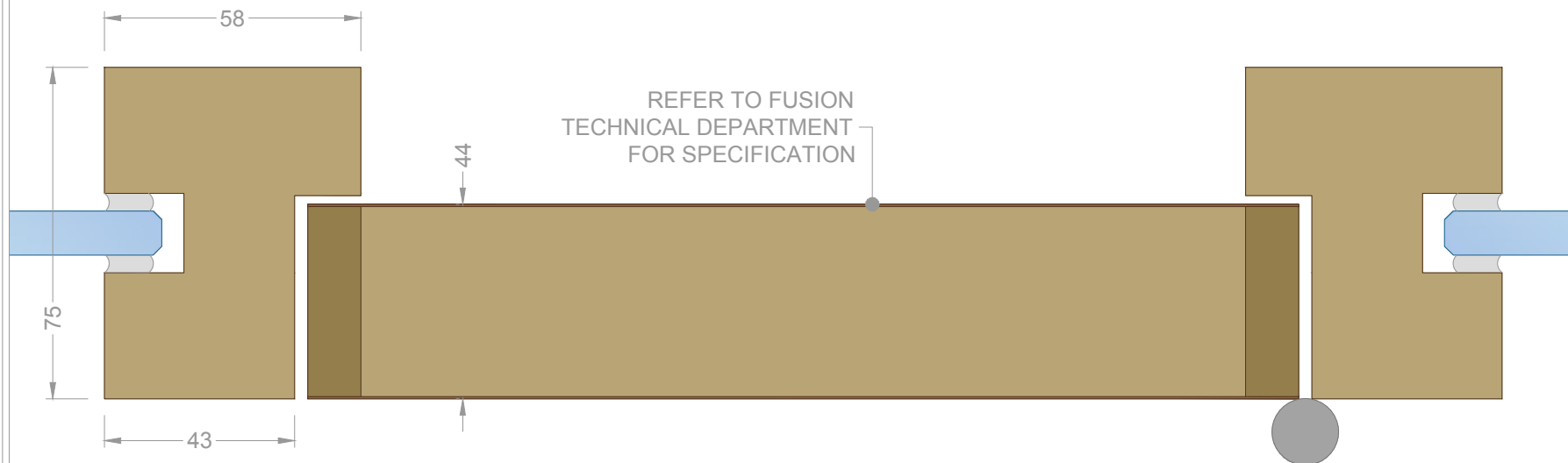
T: +44 (0)1293 220970  
E: info@fusionpartitions.com

Aluminium  
Glass  
Steel  
Gasket  
Timber  
Insulation  
Plasterboard  
Glazing Packer



Do not scale this drawing (printed or electronic versions)  
This drawing is copyright  
Discrepancies and/or ambiguities within this drawing, between  
it and information given elsewhere, must be reported  
immediately to this office for clarification before proceeding.  
All works to be carried out in accordance with the latest  
British Standards/Codes of Practice unless specifically  
directed otherwise in the specification.  
Responsibility for the reproduction of this drawing in paper  
form, or if issued in electronic format, lies with the recipient  
to check that all information has been replicated in full and  
is correct when compared to the original paper or electronic  
image.  
Graphical representations of details on this drawing have  
been co-ordinated, but are approximations only. Please refer  
to Specifications and / or Details for actual sizes.

## TIMBER DOORFRAME



REFER TO FUSION  
TECHNICAL DEPARTMENT  
FOR SPECIFICATION

Do not scale this drawing (printed or electronic versions)

This drawing is copyright

Discrepancies and/or ambiguities within this drawing, between it and information given elsewhere, must be reported immediately to this office for clarification before proceeding.

All works to be carried out in accordance with the latest British Standards/Code of Practice unless specifically directed otherwise in the specification.

Responsibility for the reproduction of this drawing in paper form, or if issued in electronic format, lies with the recipient to check that all information has been replicated in full and is correct when compared to the original paper or electronic image.

Graphical representations of details on this drawing have been co-ordinated, but are approximations only. Please refer to Specifications and details for actual sizes.