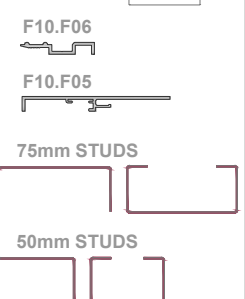
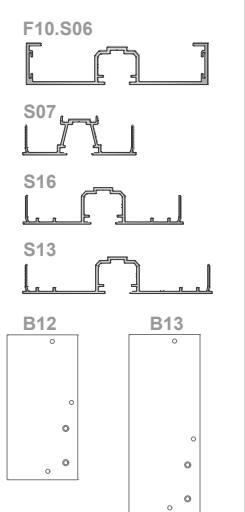
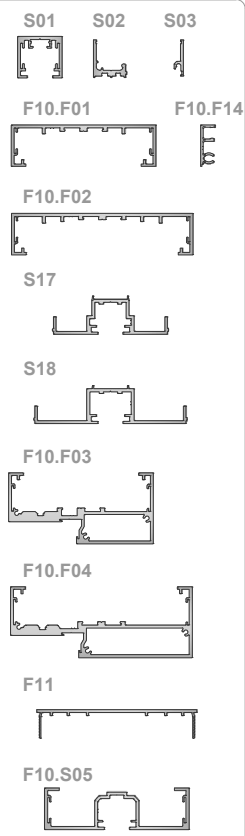


PROFILE HEAD & BASE

IDENTIFICATION

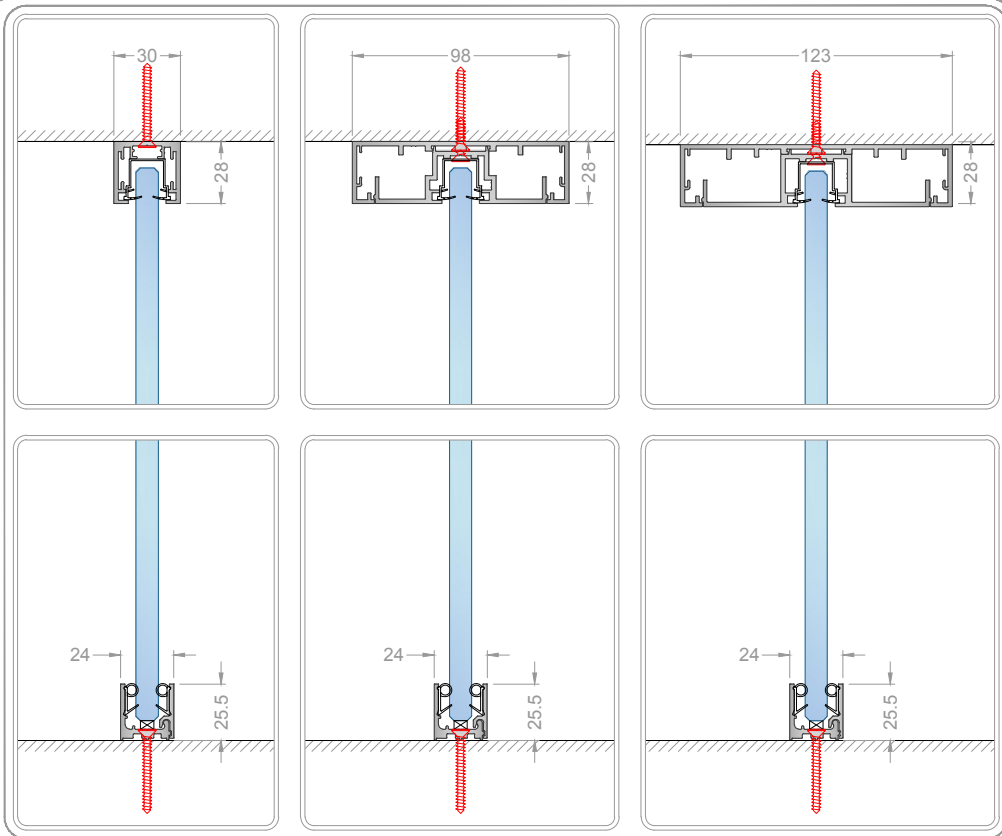


SCALE
1:6 @ A

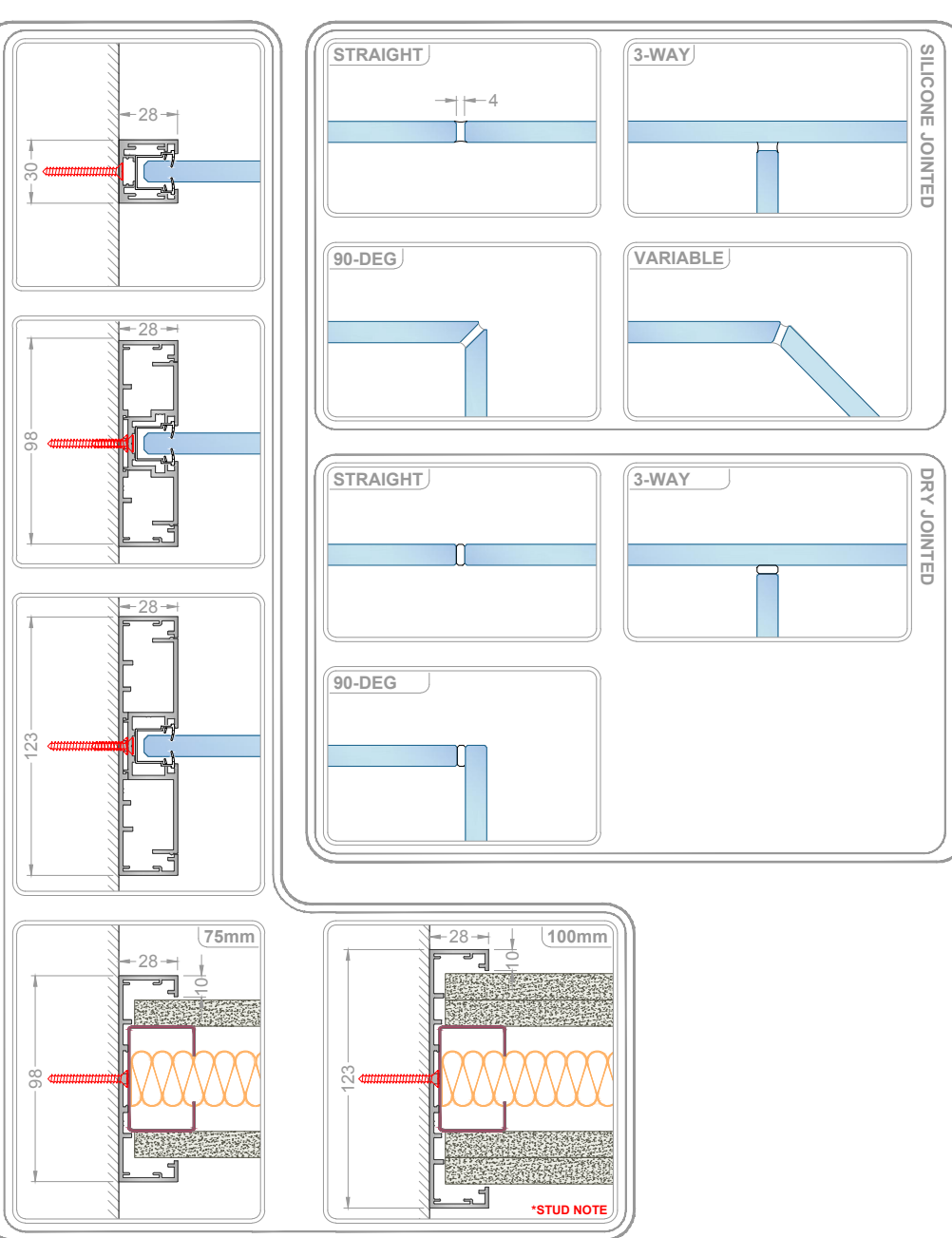
1.0 @ A

HEAD & BASE

SINGLE GLAZED

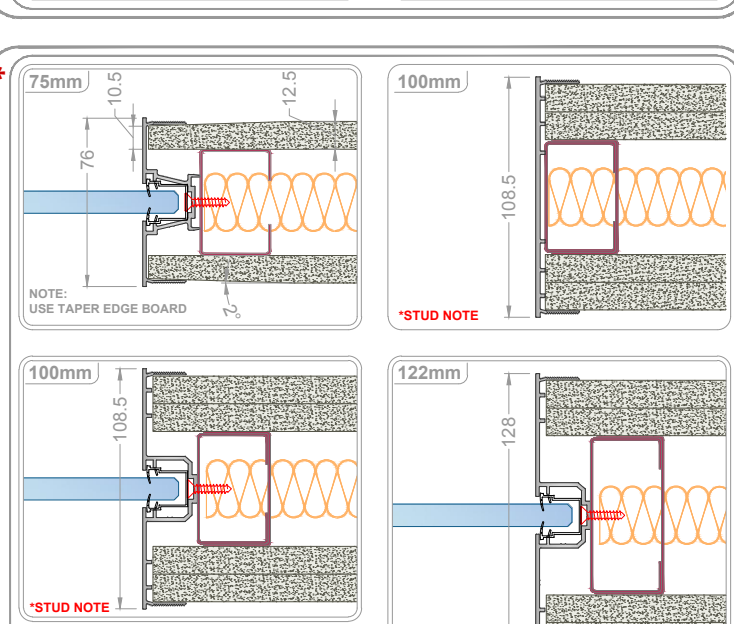
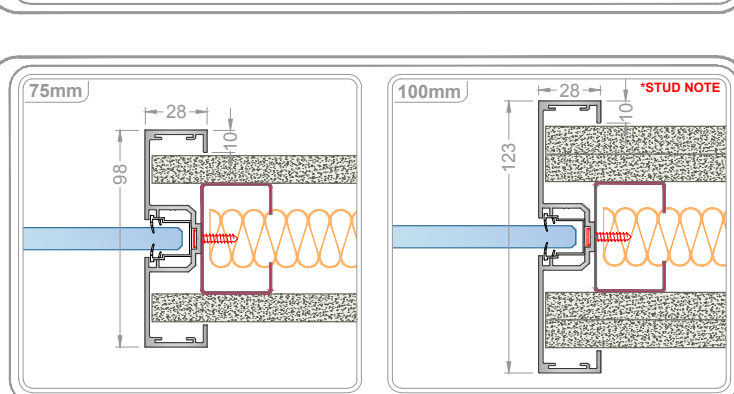
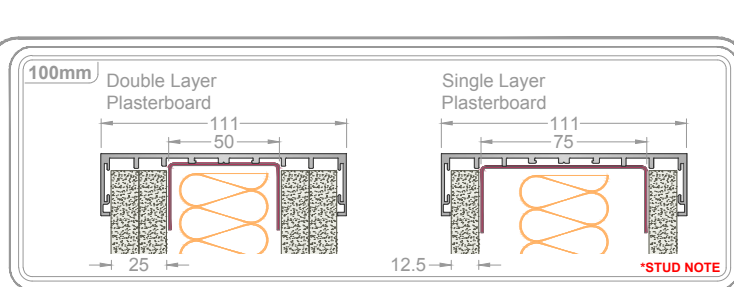
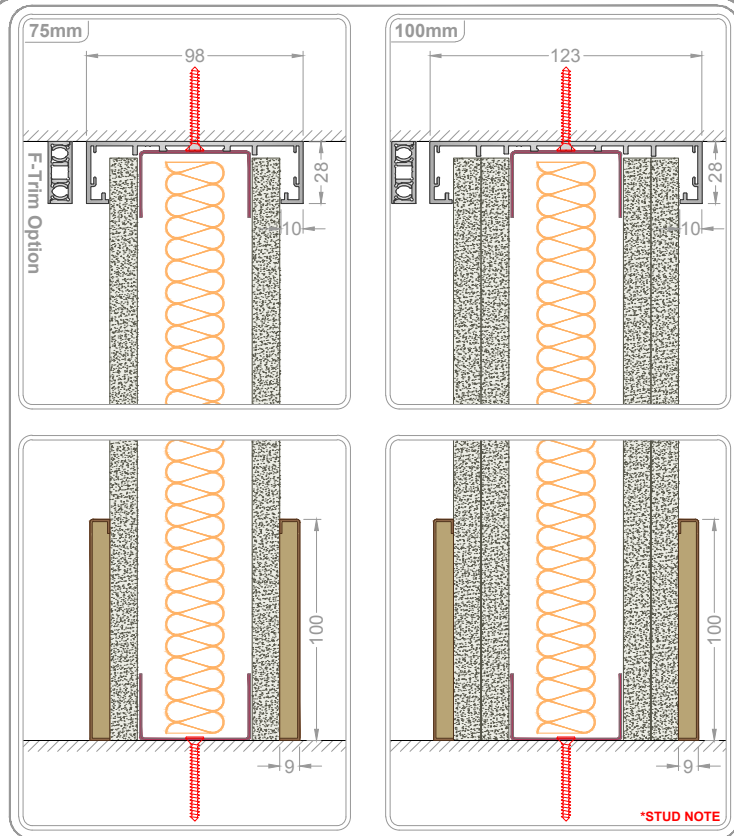


WALL ABUTMENT



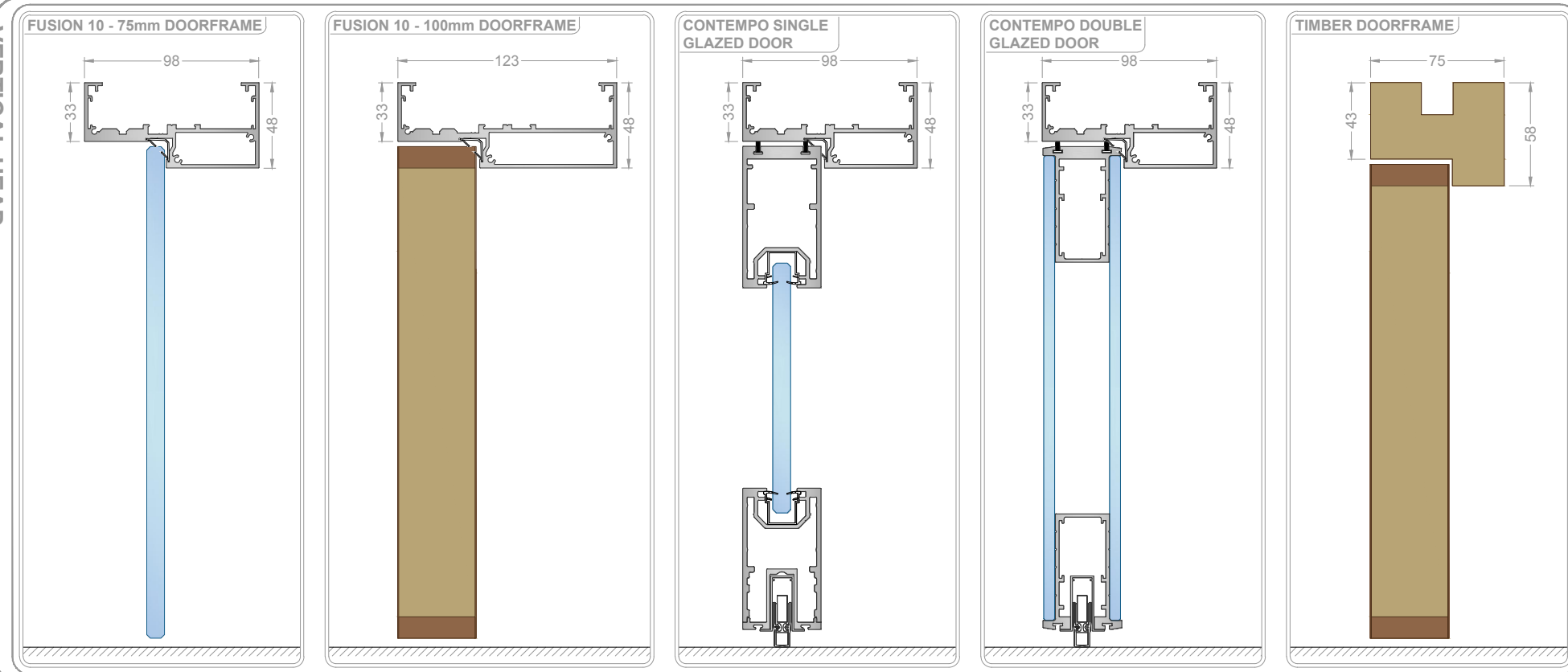
HEAD & BASE

- SOLID 75 & 100mm

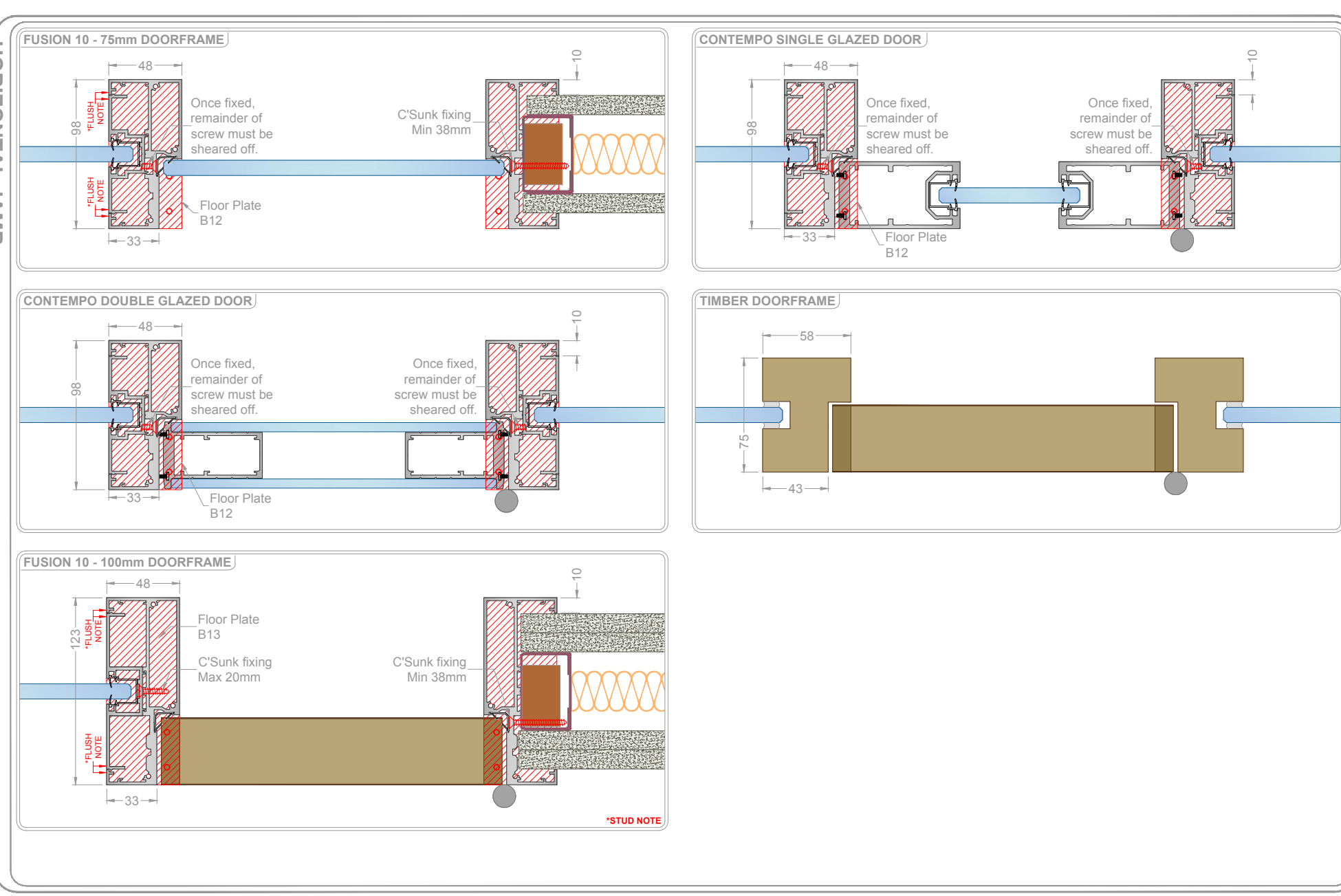


DOORFRAMES

VERTICAL HEAD



HORIZONTAL JAMBS



Fixing Summary

Location: **Head Track, Base Track & Wall Abutment**
Use suitable fixings installed at 600mm centers to secure outer channel.
Offset the 600mm centers and secure inner channel with Min 20mm countersunk screw.

Location: **3-Way Conversion, Reducer Post & Tapeable Conversion**
Secure section at 600mm centers using Min 20mm countersunk screw.

Location: Door frame
Sections secured at 600mm centers, see detail for fixings.
Floor plates fitted to frame jambs using Min 25mm countersunk screw.

***STUD NOTE** - Ensure the correct stud size is selected when building 100mm single or double skin walls. For single skin use 75mm and for double, 50mm.

***FLUSH NOTE** - Ensure that Push-fit inner profile is correctly engaged into rear of frame. Surfaces are flush when sections are mated together.

Performance Summary

System Title: Fusion10 - Clear Single Glazed		
Document No.	Description	Rw
CSG-AP1/SP1/HT1	10mm Toughened Glass	33 dB
CSG-AP2/SP2/HT2	12mm Toughened Glass	34 dB
CSG-AP3	12.8mm Acoustic Safety Glass	40 dB
CDG-AP1	Contempo Single Glazed Door in Frame	40 dB
CDG-AP2	Contempo Double Glazed Door in Frame	41 dB

System Title: Fusion Solid 75mm & 100mm		
Document No	Description	Rw
F75-AP1	Single Layer 12.5mm Wallboard, 50mm Stud & 25mm Cavity Insulation	40 dB
F75-AP2	Single Layer 12.5mm SoundBloc, 50mm Stud & 25mm Cavity Insulation	43 dB
F100-AP1	Two Layers 12.5mm Wallboard, 50mm Stud & 25mm Cavity Insulation	49 dB
F100-AP2	Two Layers 12.5mm SoundBloc, 50mm Stud & 25mm Cavity Insulation	52 dB

Drawing Title		Fusion10
Single Glazed -		Fix Detail
Scale @ A3	Drawn by	Checked
1:4	S.BM	-
unless stated		Date
		12/04/16
Drawing no.		Rev.
FIX-F10-SG		-



Do not scale this drawing (printed or electronic versions)
This drawing is copyright
Discrepancies and/or ambiguities within this drawing, between it and information given elsewhere, must be reported immediately to this office for clarification before proceeding.
All works to be carried out in accordance with the latest British Standards/Codes of Practice unless specifically directed otherwise in the specification.
Responsibility for the reproduction of this drawing in paper form, or if issued in electronic format, lies with the recipient to check that all information has been replicated in full and is correct when compared to the original paper or electronic image.
Graphical representations of details on this drawing have been co-ordinated, but are approximations only. Please refer to the specification for details.