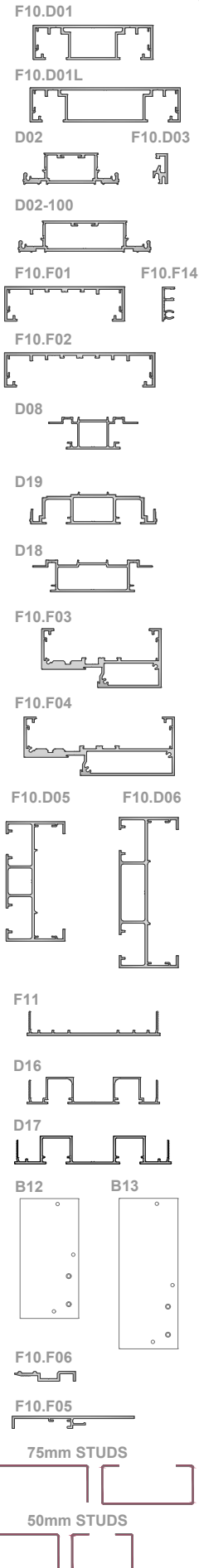


PROFILE HEAD & BASE

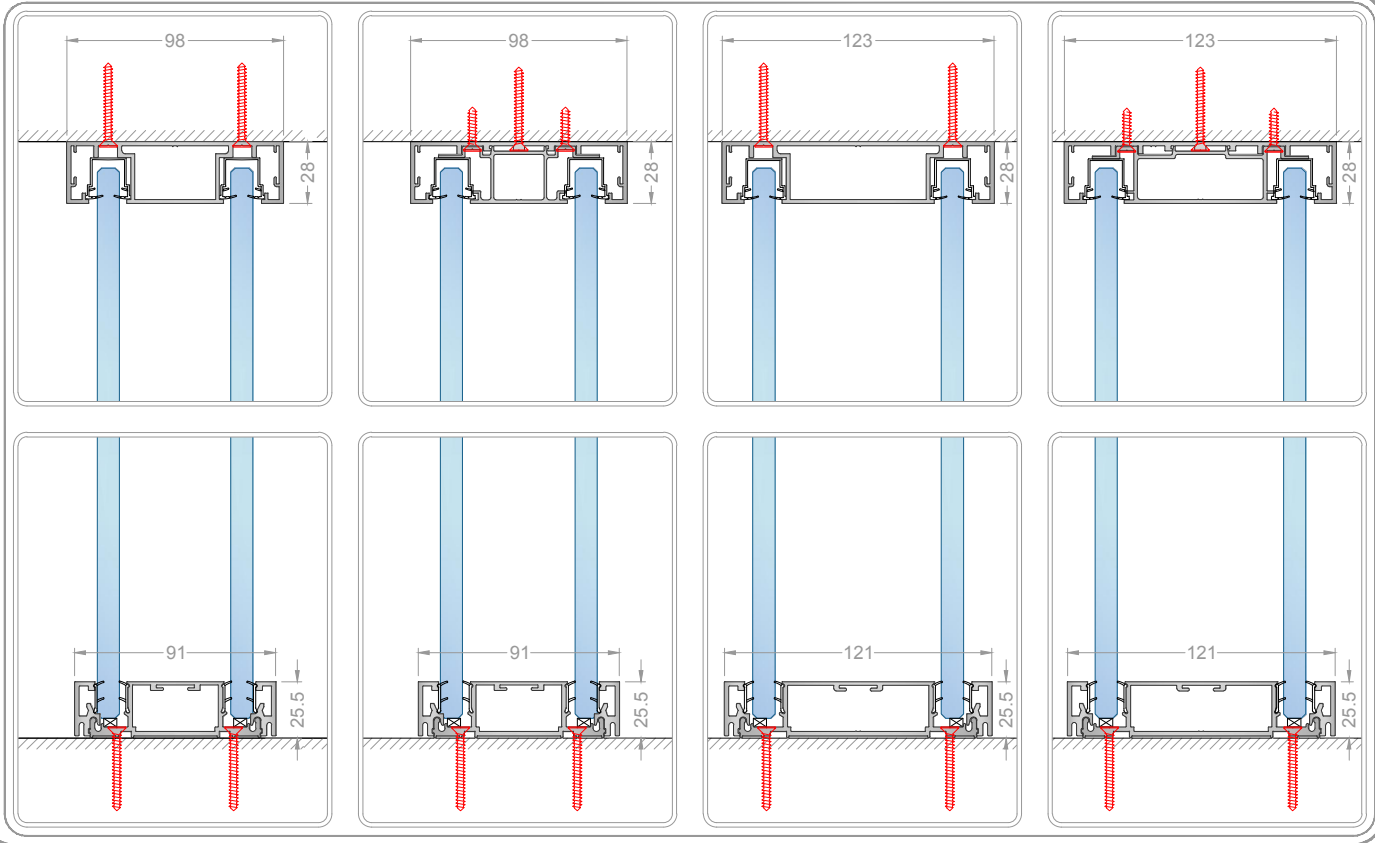
IDENTIFICATION



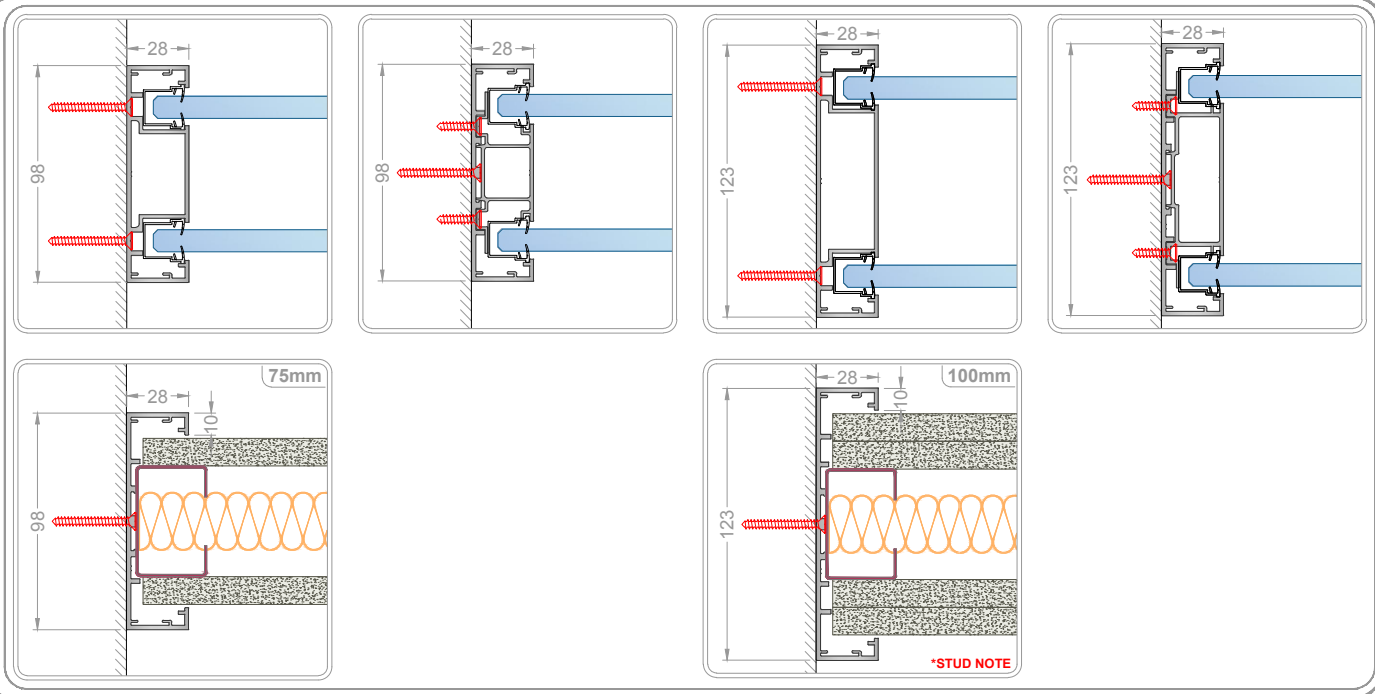
SCALE
1:6 @ A3

DOUBLE GLAZED

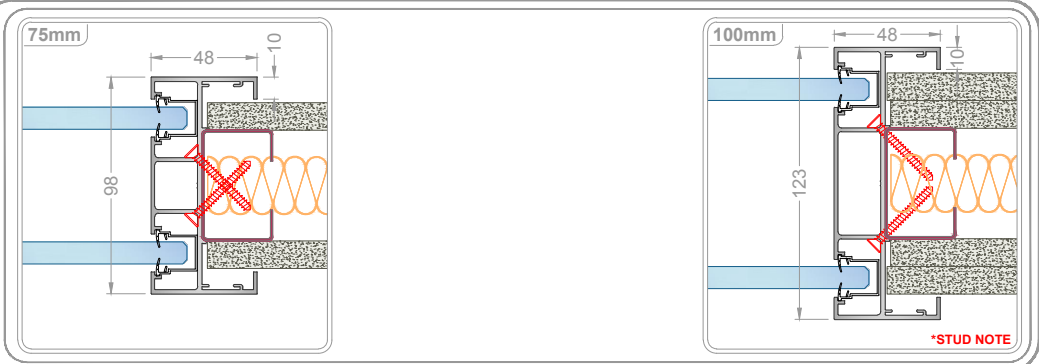
DOUBLE GLAZED



WALL ABUTMENT

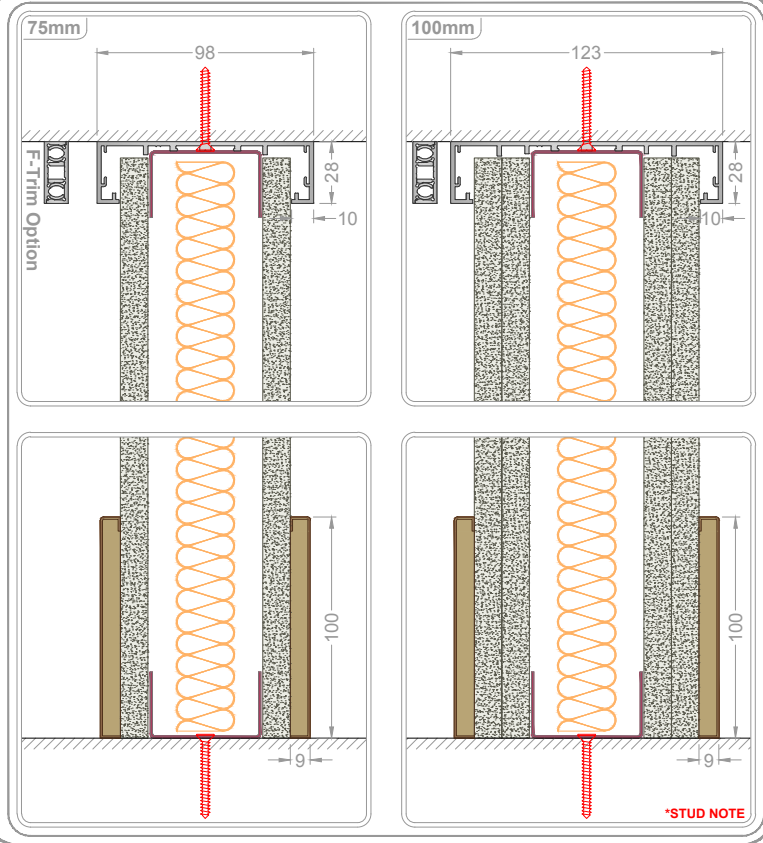


REDUCER POST

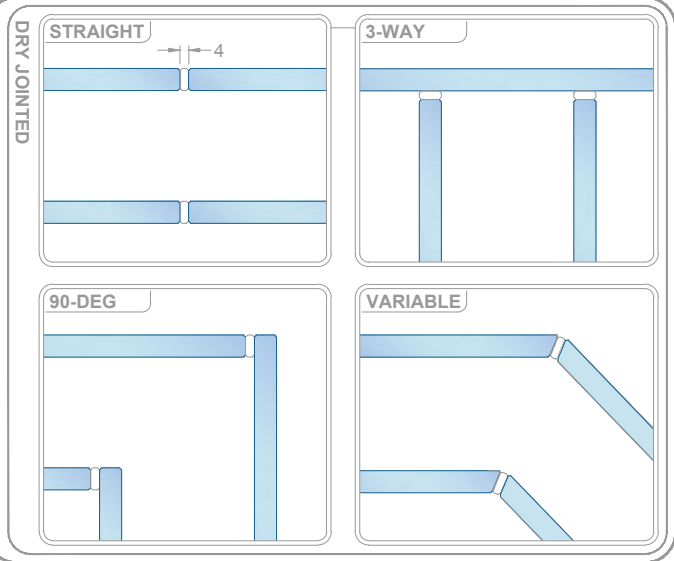


HEAD & BASE

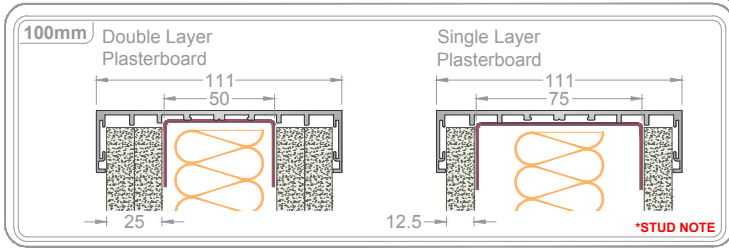
SOLID 75 & 100mm



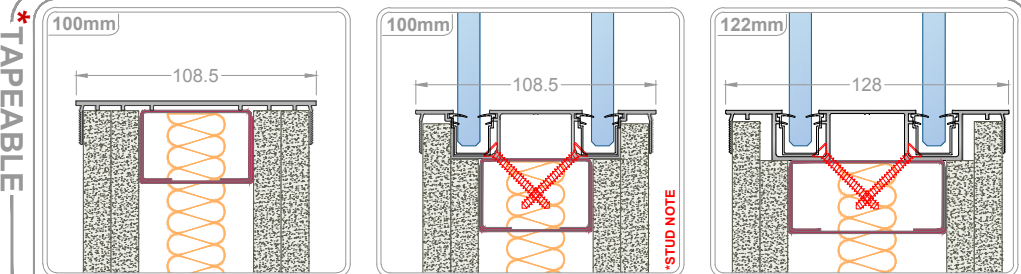
GLASS JOINT



STUDS

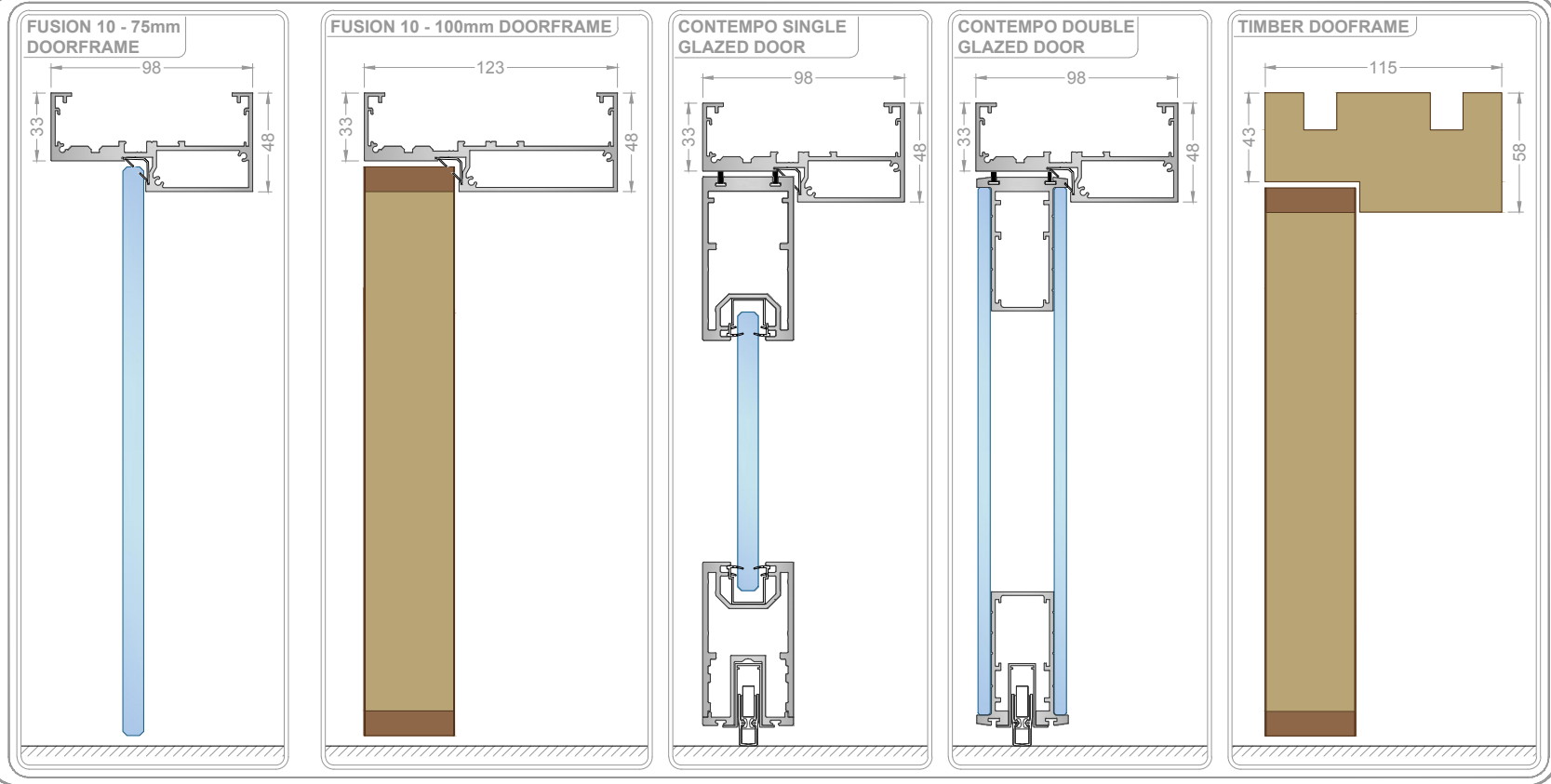


*TAPEABLE
CONVERSION

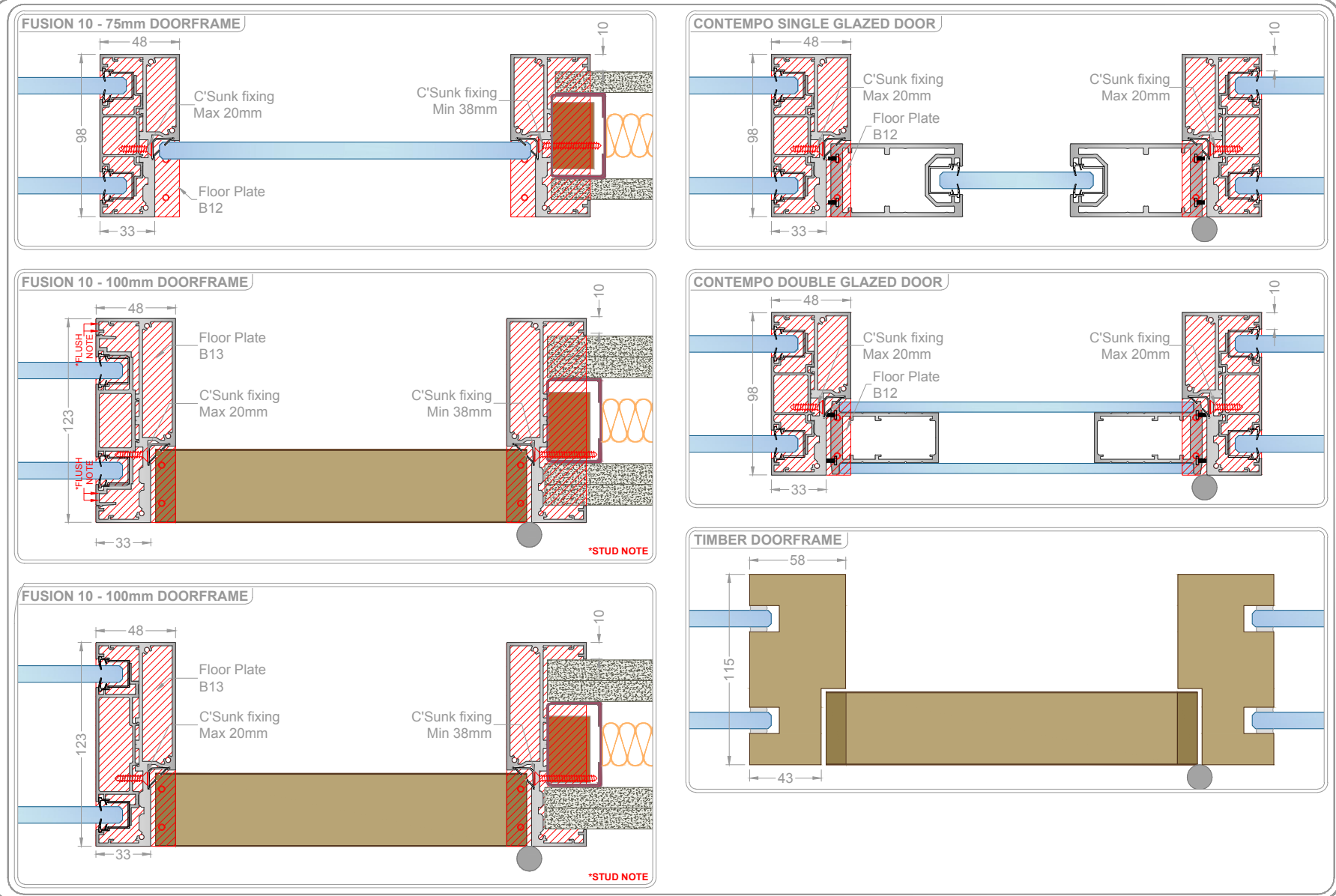


DOORFRAMES

VERTICAL HEAD



HORIZONTAL JAMB



Drawing Title: Fusion 10 Double Glazed - Fix Detail
Scale: A3
1:4
Drawing no: FIX-F10-DG
S.BM
Date: 12/04/16
Rev: -

FusionPartitions
Unit 6, I O Centre,
Salbrook Road Industrial Estate,
Salisbury, Wiltshire, SP4 7JG
T: +44 (0)1293 229070
E: info@fusionpartitions.com

Aluminium
Glass
Steel
Gasket
Timber
Insulation
Plasterboard
Glazing Packer

This drawing is copyright
Discrepancies and/or ambiguities within this drawing, between
3 and 4 dimensions given elsewhere, shall be resolved
immediately to the office for clarification before proceeding.
All work to be carried out in accordance with the latest
British Standards/Code of Practice unless specifically
directed otherwise in the specification.
Responsibility for the reproduction of this drawing in paper
form, or upload to electronic version, lies with the customer
to check that all information has been updated in full and
to correct where necessary to the original paper or electronic
image.
Computer representations of details on this drawing have
been co-ordinated, but are approximate only. Please refer
to Specifications and/or Details for actual sizes.

Performance Summary

Document No.	Description	Rw
CDG-AP6	10 & 12mm Toughened Glass	43 dB
CDG-AP7	12 & 12mm Toughened Glass	45 dB
CDG-AP8	10 Toughened & 12.8mm Acoustic Safety Glass	48 dB
CDG-AP9	10.8 & 12.8mm Acoustic Safety Glass	49 dB
CDG-AP11	12.8 & 12.8mm Acoustic Safety Glass	50 dB
CDG-AP1	Contempo Single Glazed Door in Frame	40 dB
CDG-AP2	Contempo Double Glazed Door in Frame	41 dB

Document No.	Description	Rw
F75-AP1	Single Layer 12.5mm WallBloc, 50mm Stud & 25mm Cavity Insulation	40 dB
F75-AP2	Single Layer 12.5mm SoundBloc, 50mm Stud & 25mm Cavity Insulation	43 dB
F100-AP1	Two Layers 12.5mm WallBloc, 50mm Stud & 25mm Cavity Insulation	49 dB
F100-AP2	Two Layers 12.5mm SoundBloc, 50mm Stud & 25mm Cavity Insulation	52 dB

Fixing Summary

Location: **Head Track, Base Track & Wall Abutment**
Use suitable fixings installed at 600mm centers to secure outer channel.
At 600mm centers secure inner channel with Min 20mm countersunk screw.
Location: **3-Way Conversion, Reducer Post & Tapeable Conversion**
Secure section at 600mm centers using Min 20mm countersunk screw.
Location: **Door frame**
Sections secured at 600mm centers, see detail for fixings.
Floor plates fitted to frame jambs using Min 25mm countersunk screw.
*STUD NOTE - Ensure the correct stud size is selected when building 100mm single or double skin walls. For single skin use 75mm and for double, 50mm.
*FLUSH NOTE - Ensure that Push-fit inner profile is correctly engaged into rear of frame. Surfaces are flush when sections are mated together.