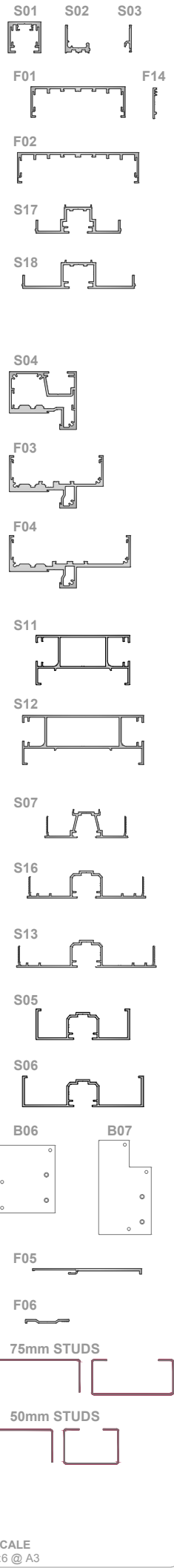


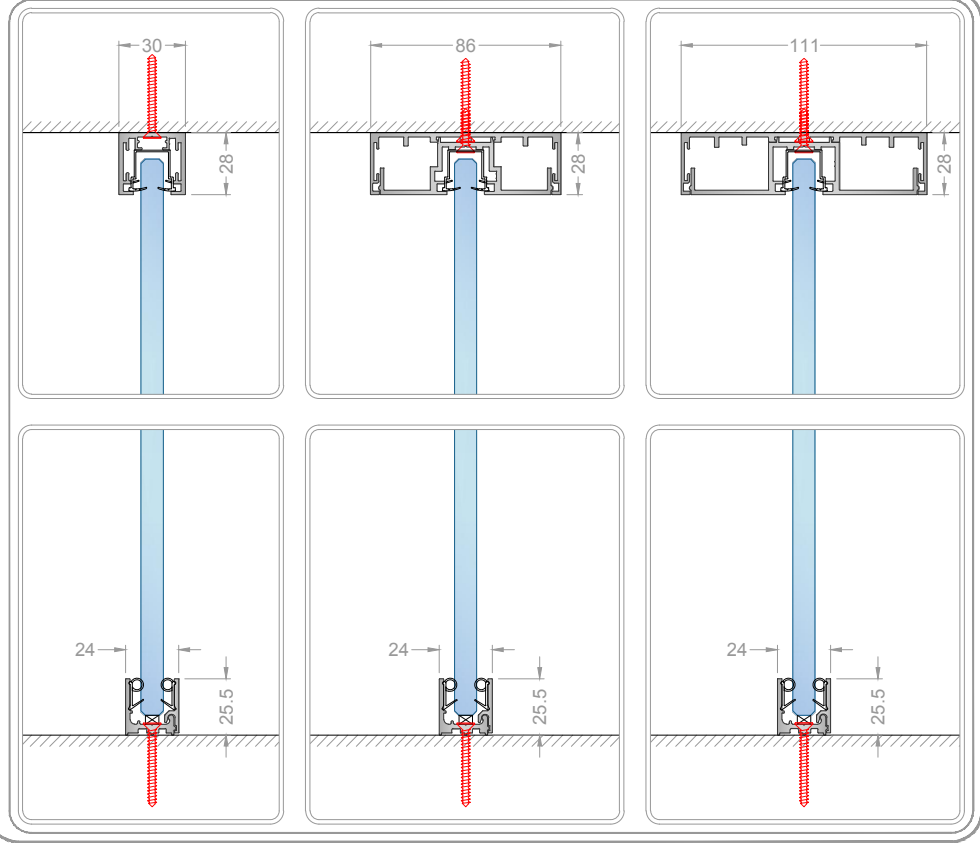
# PROFILE HEAD & BASE

IDENTIFICATION

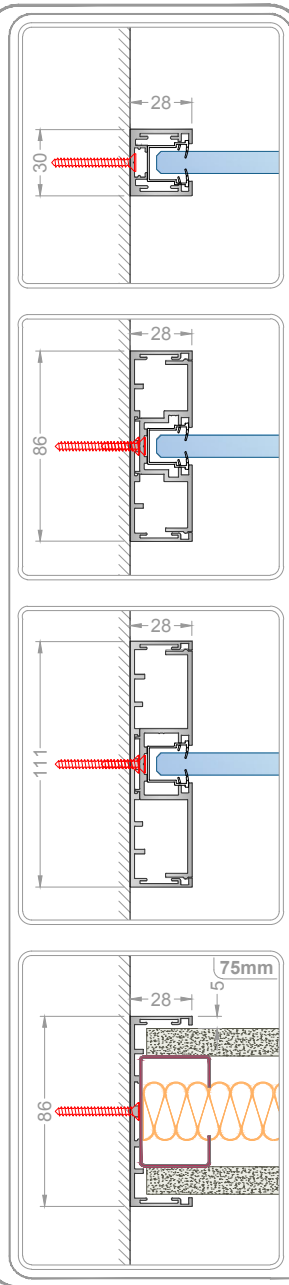


# HEAD & BASE

SINGLE GLAZED



WALL ABUTMENT



STRAIGHT

90-DEG

STRAIGHT

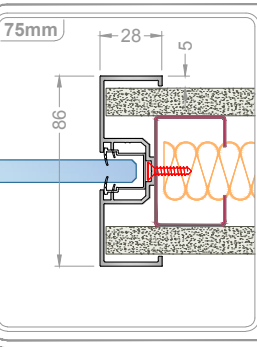
90-DEG

3-WAY

VARIABLE

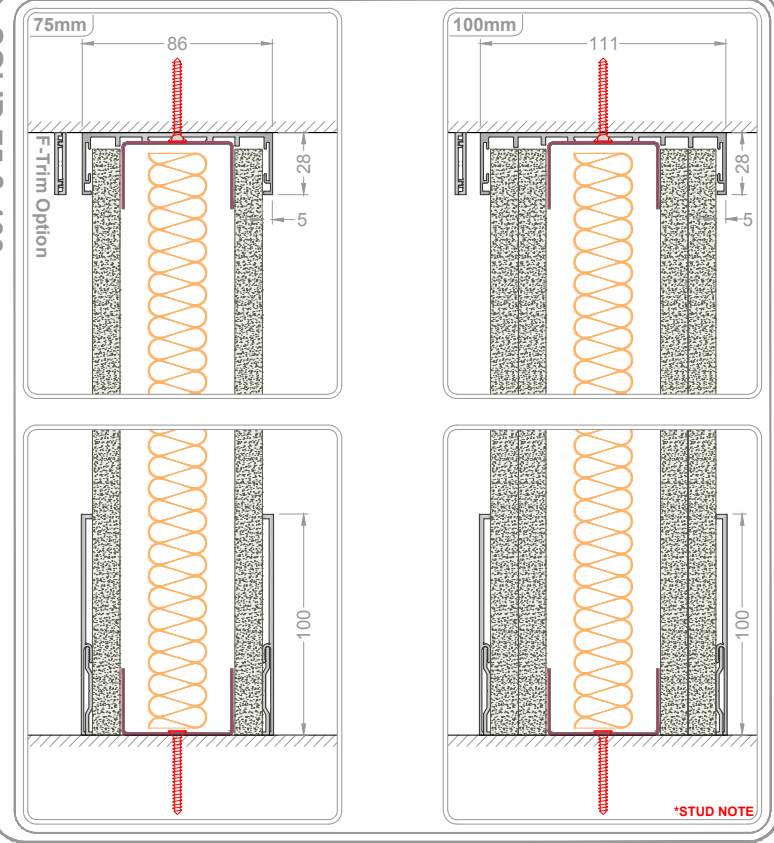
3-WAY

REDUCER POST

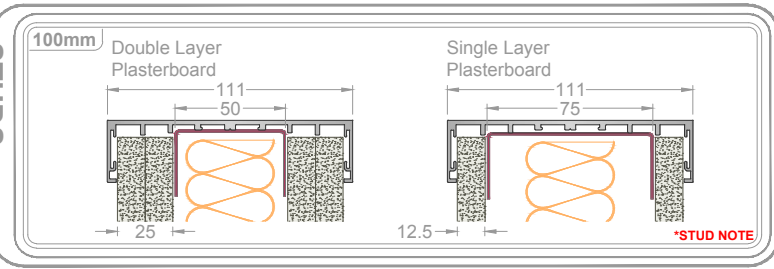


# HEAD & BASE

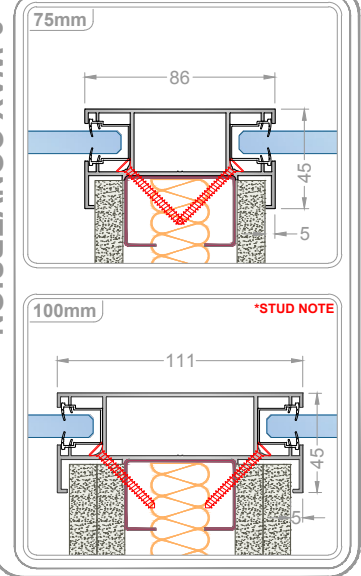
SOLID 75 & 100mm



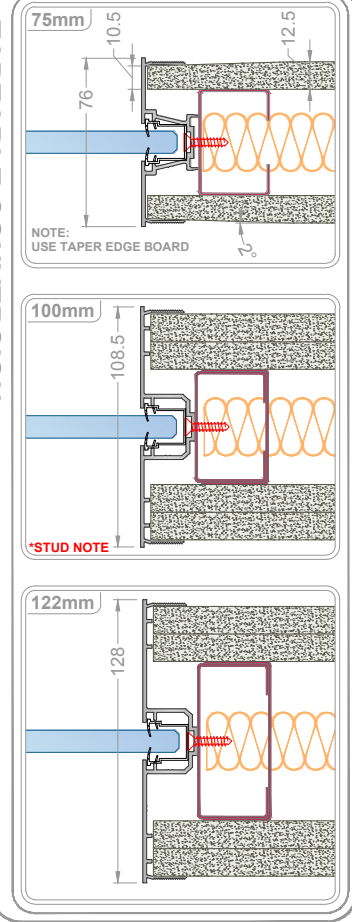
GLASS JOINT



3-WAY CONVERSION

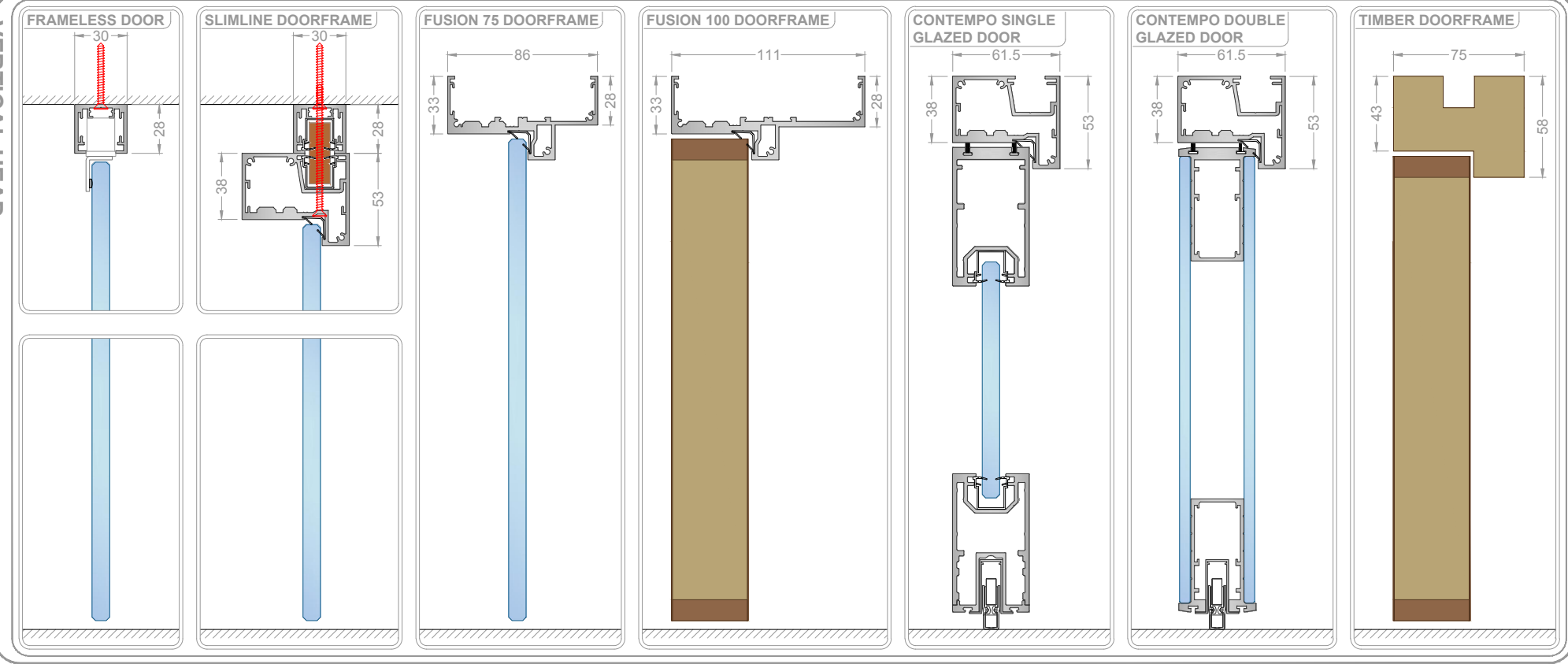


TAPEABLE CONVERSION

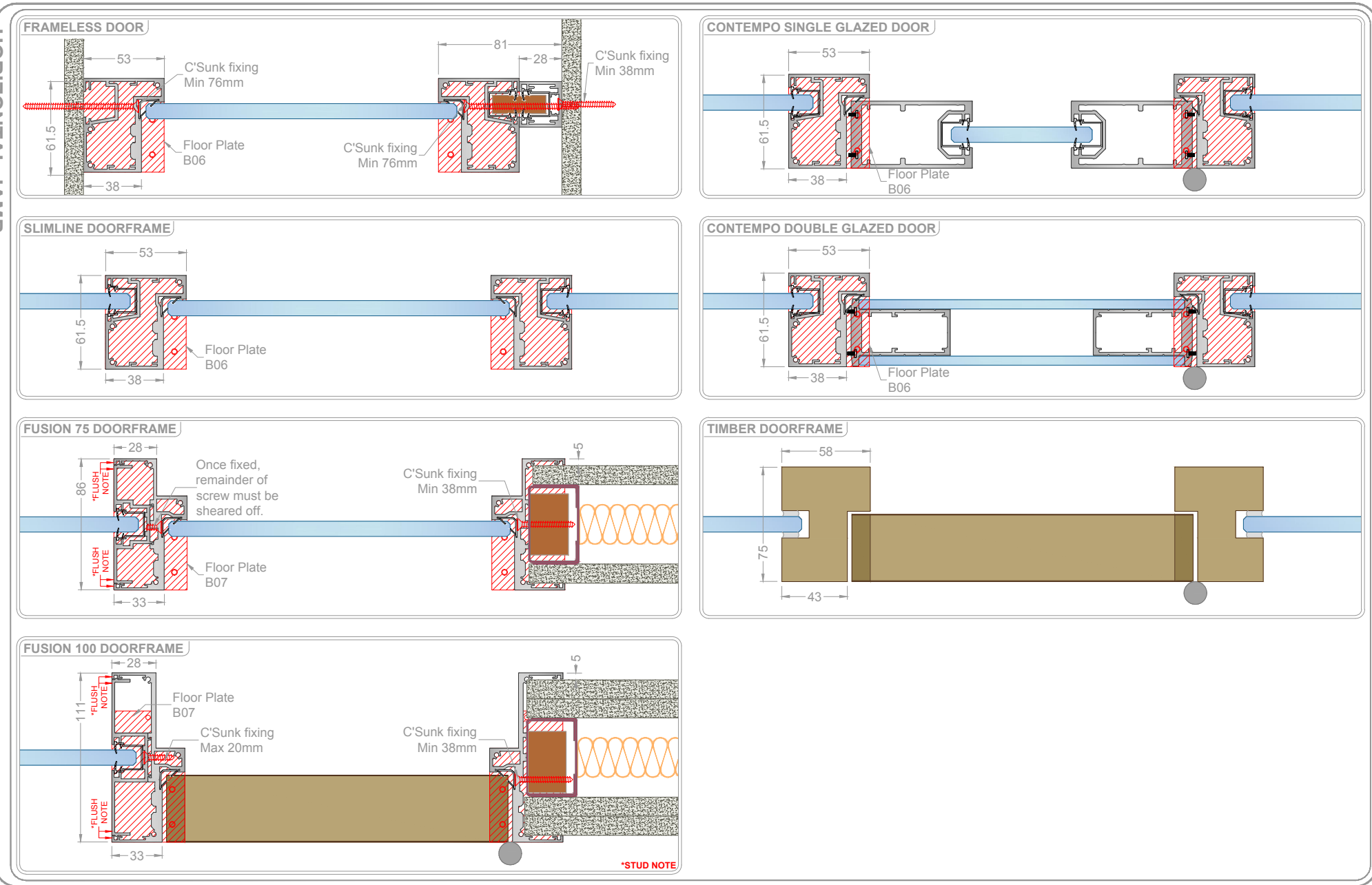


# DOORFRAMES

VERTICAL HEAD



HORIZONTAL JAMB



Drawing Title  
Clear Single Glazed - Fix Detail  
Scale @ A3  
1:4  
unless stated  
Drawing no.  
FIX-CSG

Drawn by  
S.BM  
Checked  
-  
Date  
12/04/16  
Rev.  
-

FusionPartitions  
Unit 6, L1 O Centre,  
Salbrook Road Industrial Estate,  
Salisbury, Wiltshire,  
BA1 1JL  
T: +44 (0)1293 220970  
E: info@fusionpartitions.com

Aluminium  
Glass  
Steel  
Gasket  
Timber  
Insulation  
Plasterboard  
Glazing Packer

Do not scale this drawing (printed or electronic versions)  
This drawing is copyright  
The drawings are the property of FusionPartitions and are not to be reproduced without written permission.  
All works to be carried out in accordance with the latest British Standards/Codes of Practice unless specifically directed otherwise in the specification.  
Representations for the reproduction of this drawing in paper form, or if required in electronic format, shall be the responsibility of the user and shall not be held responsible for any errors or omissions.  
Graphical representations of details on this drawing have been simplified for clarity and are not intended to be used as a guide to construction.

## Performance Summary

Document No.	Description	Rw
CSG-AP1/SP1/HT1	10mm Toughened Glass	33 dB
CSG-AP2/SP2/HT2	12mm Toughened Glass	34 dB
CSG-AP3	12.8mm Acoustic Safety Glass	40 dB
CDG-AP1	Contempo Single Glazed Door in Frame	40 dB
CDG-AP2	Contempo Double Glazed Door in Frame	41 dB

Document No.	Description	Rw
F75-AP1	Single Layer 12.5mm Wallboard, 50mm Stud & 25mm Cavity Insulation	40 dB
F75-AP2	Single Layer 12.5mm SoundBloc, 50mm Stud & 25mm Cavity Insulation	43 dB
F100-AP1	Two Layers 12.5mm Wallboard, 50mm Stud & 25mm Cavity Insulation	49 dB
F100-AP2	Two Layers 12.5mm SoundBloc, 50mm Stud & 25mm Cavity Insulation	52 dB

## Fixing Summary

Location: **Head Track, Base Track & Wall Abutment**  
Use suitable fixings installed at 600mm centers to secure outer channel.  
At 600mm centers secure inner channel with Min 20mm countersunk screw.  
Location: **3-Way Conversion, Reducer Post & Tapeable Conversion**  
Secure section at 600mm centers using Min 20mm countersunk screw.  
Location: **Door frame**  
Sections secured at 600mm centers, see detail for fixings.  
Floor plates fitted to frame jambs using Min 25mm countersunk screw.  
**\*STUD NOTE** - Ensure the correct stud size is selected when building 100mm single or double skin walls. For single skin use 75mm and for double, 50mm.  
**\*FLUSH NOTE** - Ensure that Push-fit inner profile is correctly engaged into rear of frame. Surfaces are flush when sections are mated together.