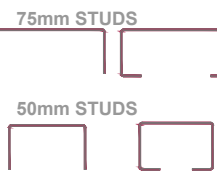
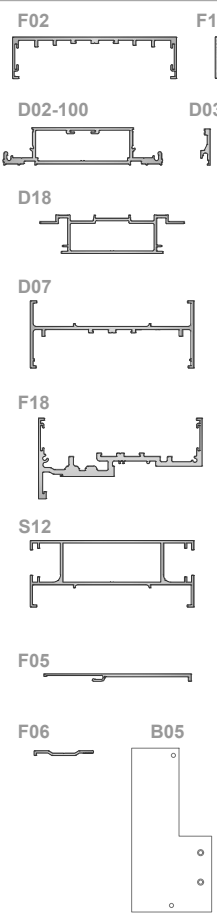


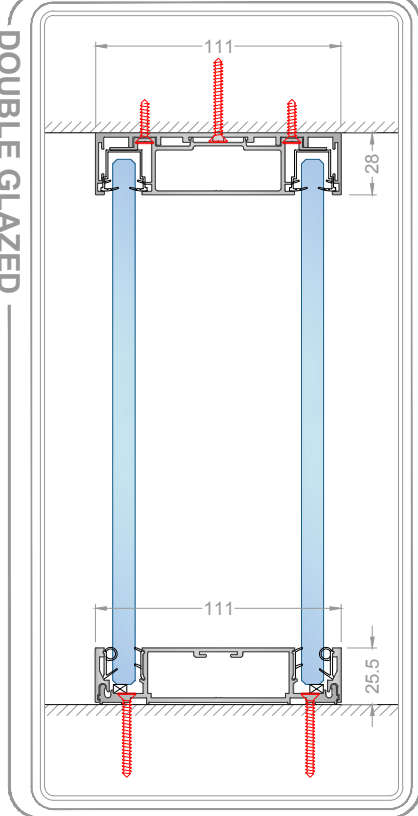
PROFILE HEAD & BASE

IDENTIFICATION

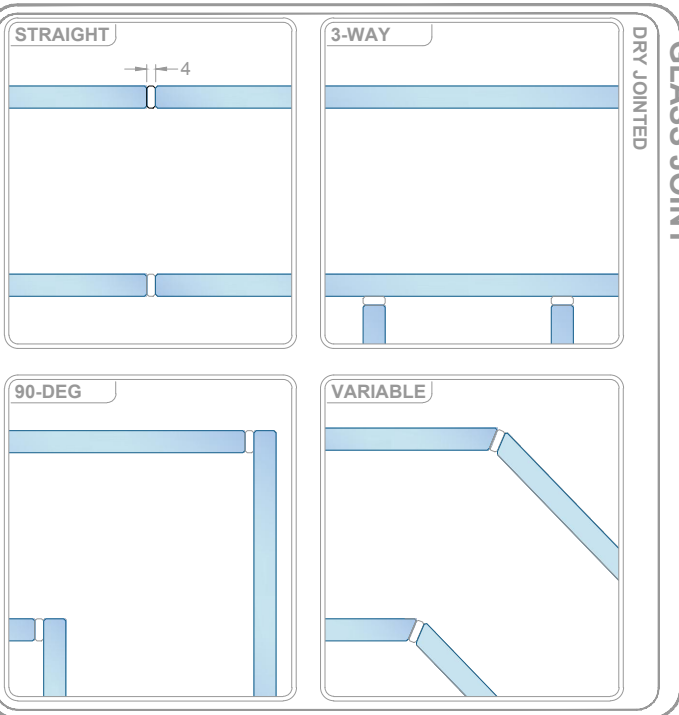
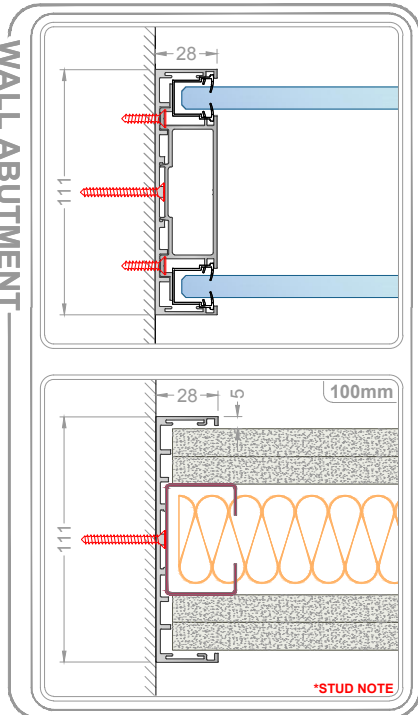


SCALE
1:6 @ A3

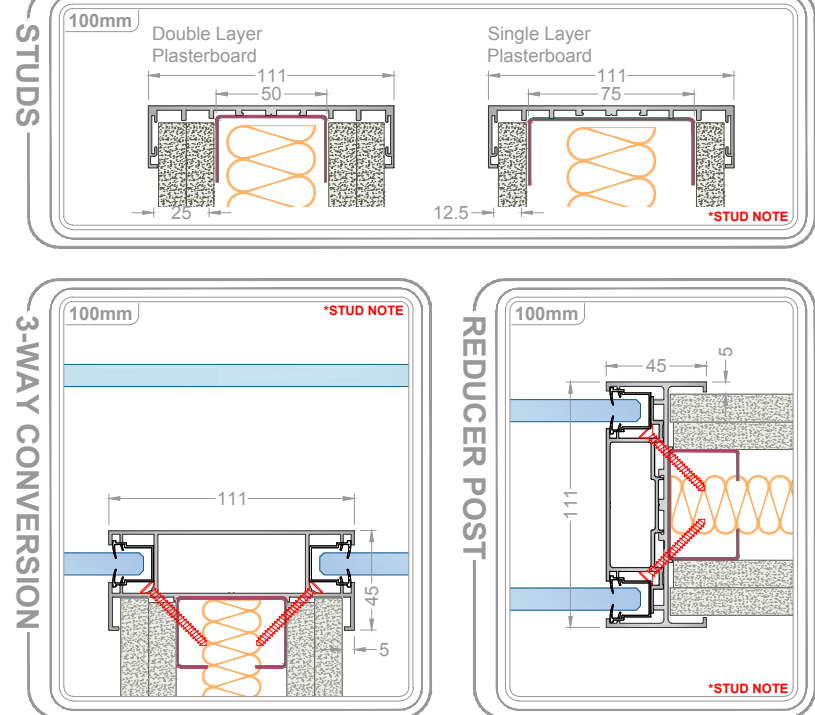
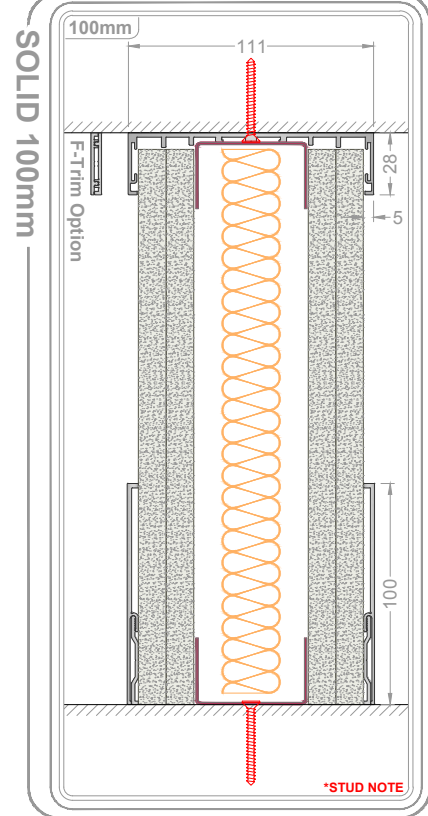
DOUBLE GLAZED



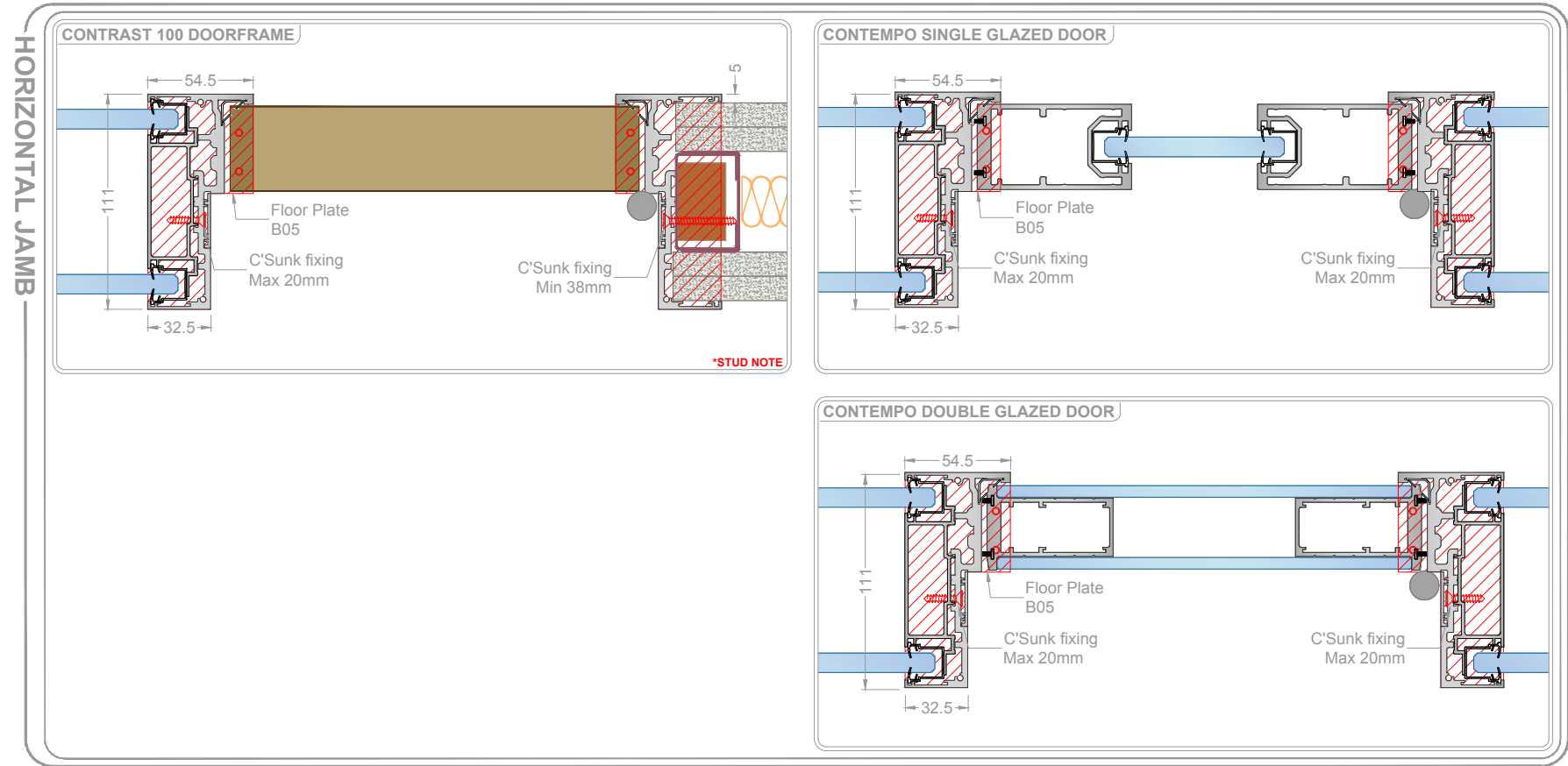
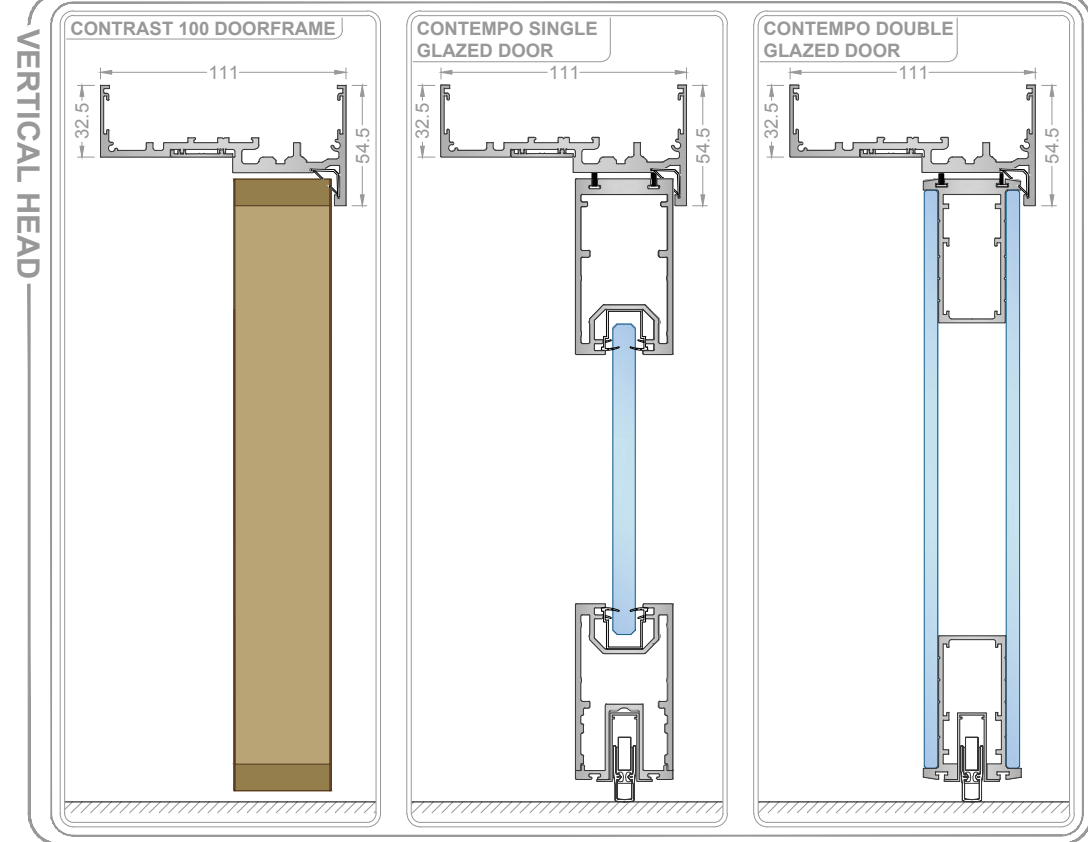
WALL ABUTMENT



HEAD & BASE



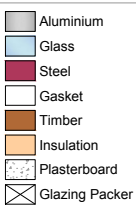
DOORFRAMES



Drawing Title
Contrast 100mm
Mullion Free - Fix Detail
Scale @ A3
1:4
unless stated
Drawing no.
FIX-CON100

Drawn by
S.BM
Checked
-
Date
12/04/16
Rev.
-

T: +44 (0)1293 228970
E: info@fusionpartitions.com



Do not scale this drawing (printed or electronic versions)
This drawing is copyright
Discrepancies between analogues within this drawing, between it and information given elsewhere, must be reported immediately to this office for clarification before proceeding.
All works to be carried out in accordance with the latest British Standards/Codes of Practice unless specifically directed otherwise in the specification.
Responsibility for the reproduction of this drawing in paper form, or if required in electronic format, lies with the recipient to check that all information has been replicated in full and is correct when compared to the original paper or electronic image.
Graphical representations of details on this drawing have been simplified, but are approximate only. Please refer to Specifications and / or Details for actual sizes.

Performance Summary

Document No.	Description	Rw
CDG-AP6	10 & 12mm Toughened Glass	43 dB
CDG-AP7	12 & 12mm Toughened Glass	45 dB
CDG-AP8	10 Toughened & 12.8mm Acoustic Safety Glass	48 dB
CDG-AP9	10.8 & 12.8mm Acoustic SafetyGlass	49 dB
CDG-AP11	12.8 & 12.8mm Acoustic Safety Glass	50 dB
CDG-AP1	Contempo Single Glazed Door in Frame	40 dB
CDG-AP2	Contempo Double Glazed Door in Frame	41 dB

System Title: Fusion Solid 100mm

Document No.	Description	Rw
F100-AP1	Two Layers 12.5mm Wallboard, 50mm Stud & 25mm Cavity Insulation	49 dB
F100-AP2	Two Layers 12.5mm SoundBloc, 50mm Stud & 25mm Cavity Insulation	52 dB

Fixing Summary

Location: **Head Track, Base Track & Wall Abutment**
Use suitable fixings installed at 600mm centers to secure outer channel.
At 600mm centers secure inner channel with Min 20mm countersunk screw.
Location: **3-Way Conversion, Reducer Post & Tapeable Conversion**
Secure section at 600mm centers using Min 20mm countersunk screw.

Location: **Door frame**
Sections secured at 600mm centers, see detail for fixings.
Floor plates fitted to frame jambs using Min 25mm countersunk screw.

***STUD NOTE** - Ensure the correct stud size is selected when building 100mm single or double skin walls. For single skin use 75mm and for double, 50mm.