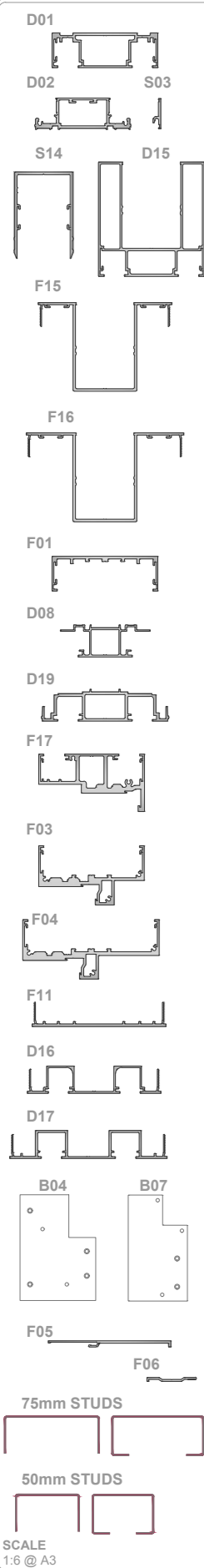


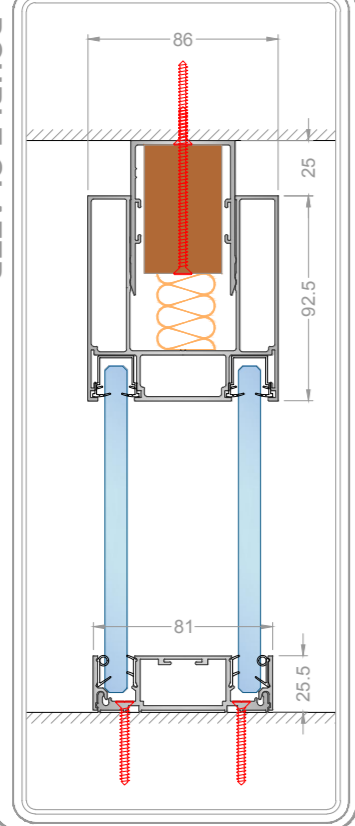
PROFILE HEAD & BASE

IDENTIFICATION

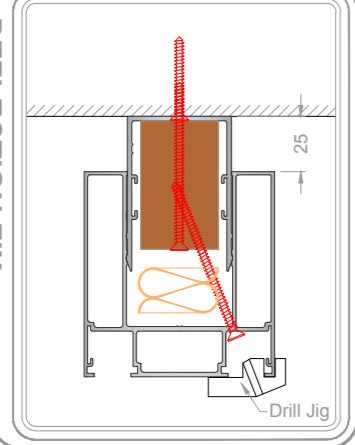
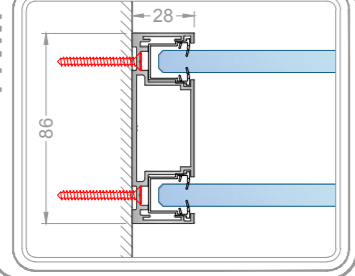


HEAD & BASE

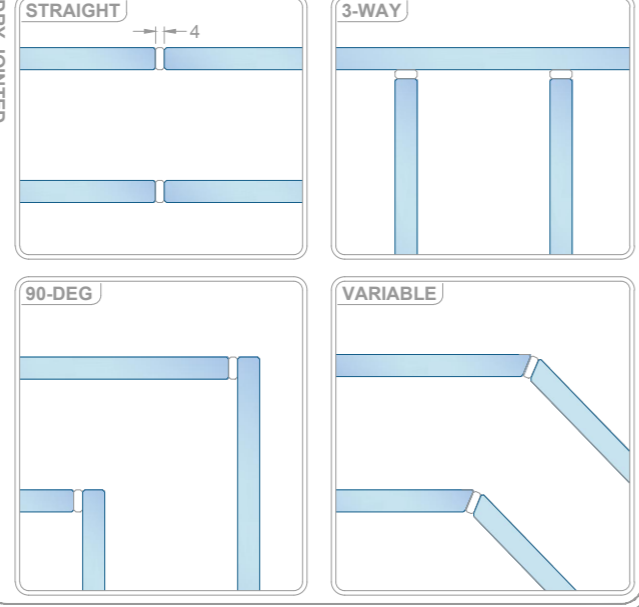
DOUBLE GLAZED



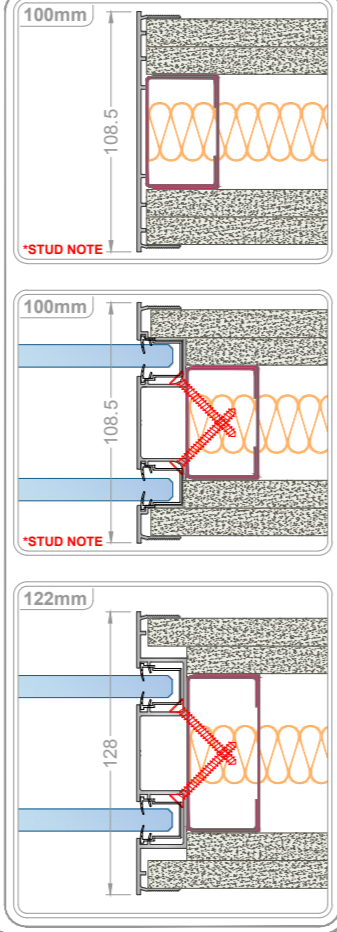
DEFLECTION FIX-

WALL—
ABUTMENT

GLASS JOINT

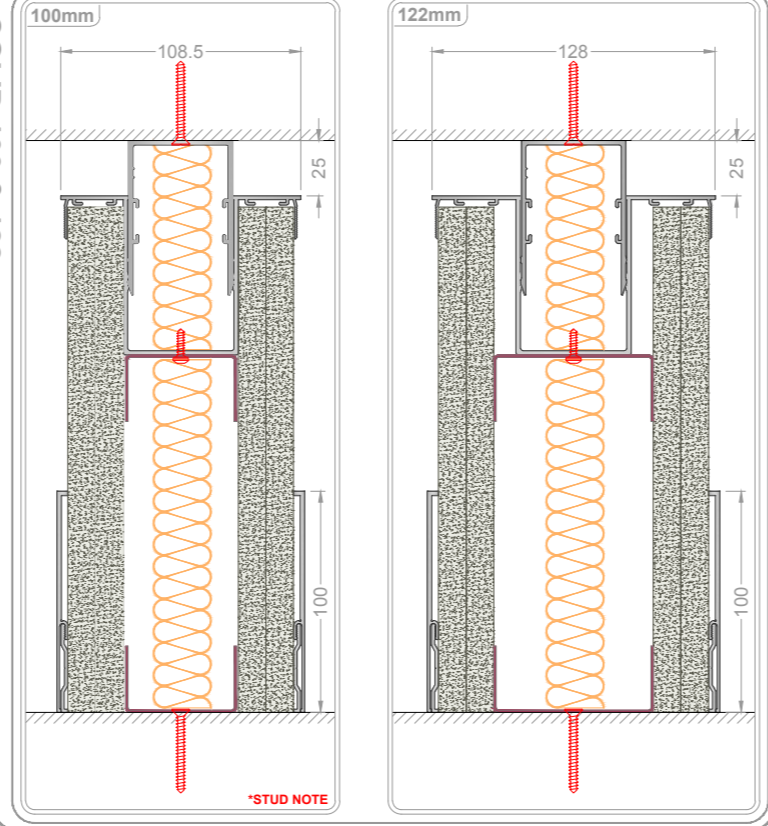


- TAPEABLE CONVERSION

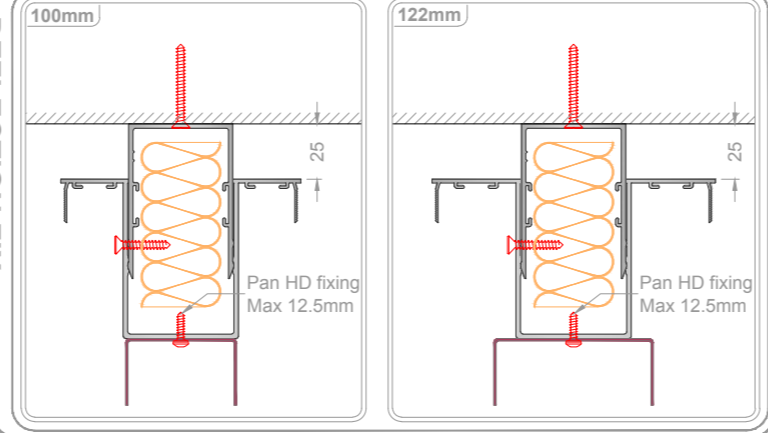


HEAD & BASE

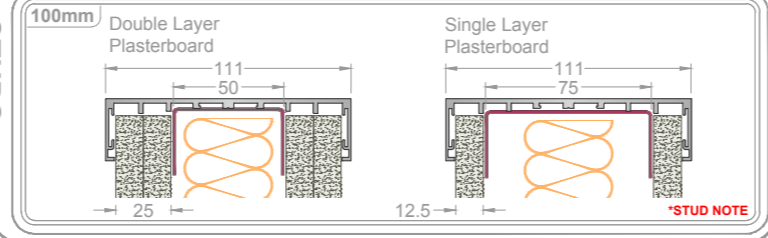
SOLID 100 & 122mm



DEFLECTION FIX-

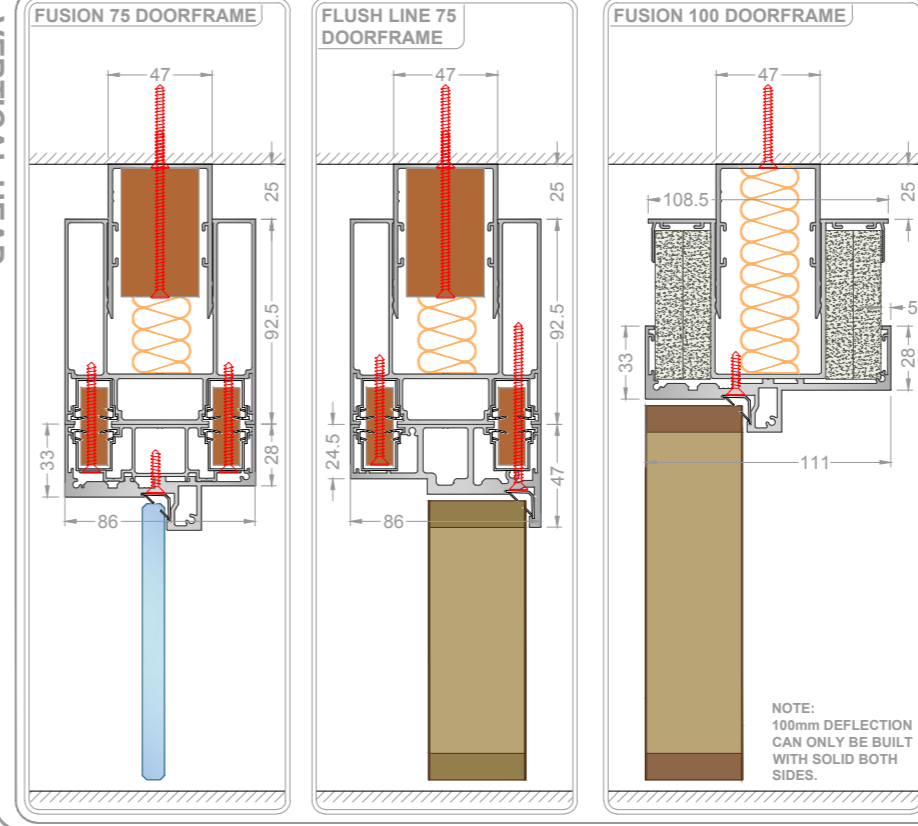


STUDS

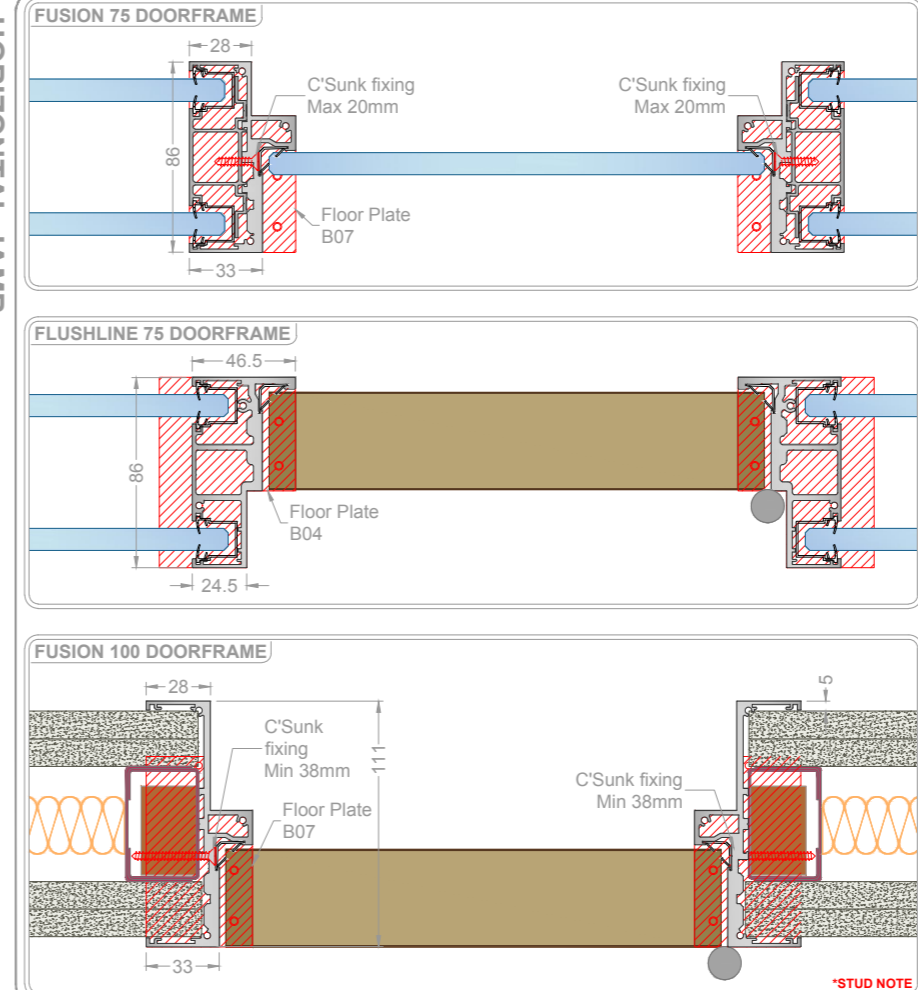


DOORFRAMES

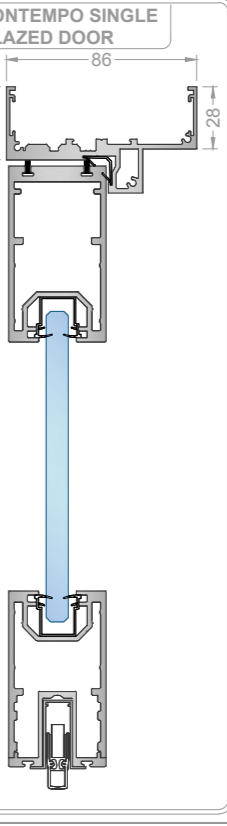
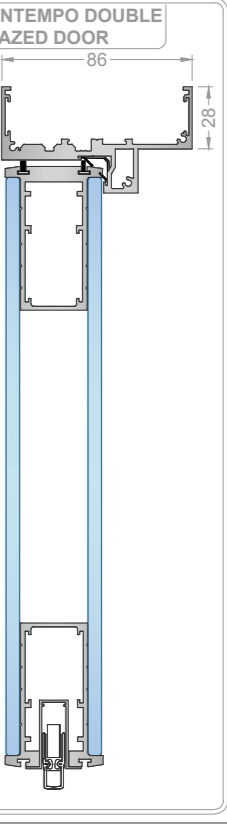
- VERTICAL HEAD



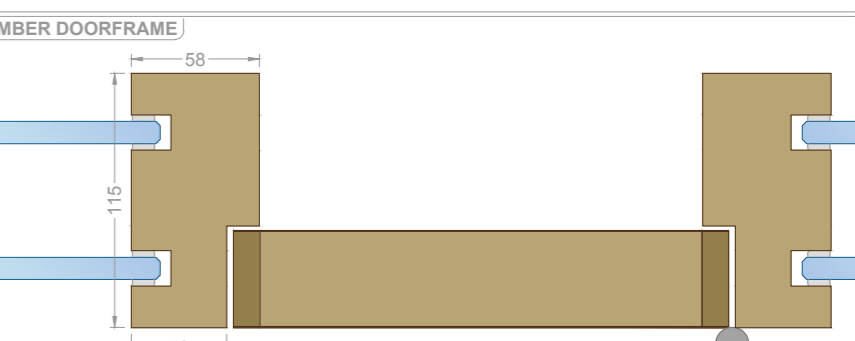
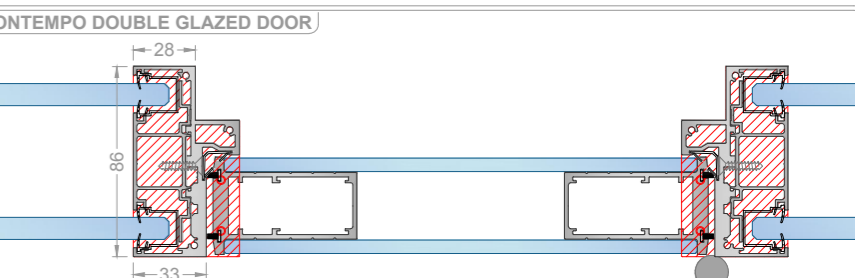
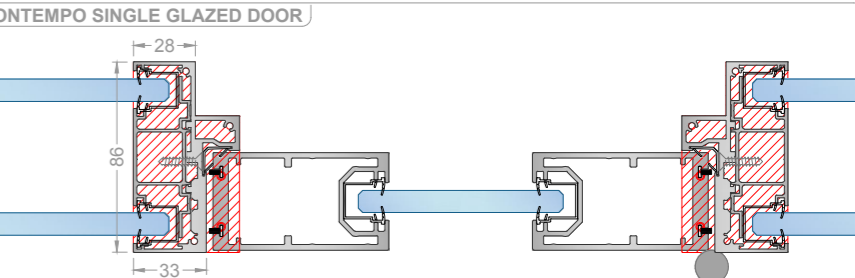
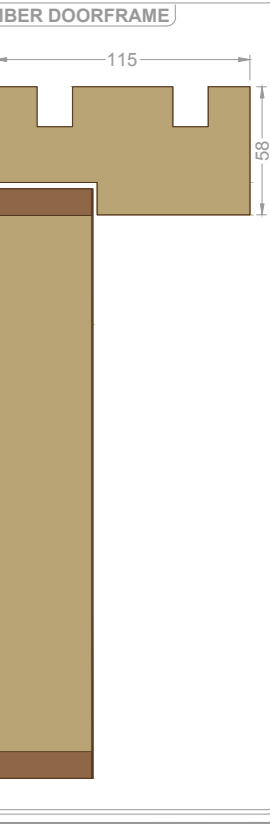
HORIZONTAL JAMB



CC
GL

CO
GL

TIM



Performance Summary

System Title: Clear Line Double Glazed 75mm (Mullion Free)		
Document No.	Description	Rw
CDG-AP6	10 & 12mm Toughened Glass	43 dB
CDG-AP7	12 & 12mm Toughened Glass	45 dB
CDG-AP8	10 Toughened & 12.8mm Acoustic Safety Glass	48 dB
CDG-AP9	10.8 & 12.8mm Acoustic SafetyGlass	49 dB
CDG-AP11	12.8 & 12.8mm Acoustic Safety Glass	50 dB
CDG-AP1	Contempo Single Glazed Door in Frame	40 dB
CDG-AP2	Contempo Double Glazed Door in Frame	41 dB

Fixing Summary

Location: **Head Track, Base Track & Wall Abutment**
 Use suitable fixings installed at 600mm centers to secure deflection channel.
 Offset the centers and fix timber infill in position using Min 76mm screw.
 Locate the deflection head around channel. Secure screws through the section into the timber to maintain a Nominal 25mm gap. Use Drill Jig if necessary for pilot bore.
 Remove the screws as the build progresses to allow deflection assembly to work freely.

Location: **Tapeable Conversion**
Secure section at 600mm centers using Min 20mm countersunk screw.

Location: **Door frame**
 Sections secured at 600mm centers, see detail for fixings.
 Floor plates fitted to frame jambs using Min 25mm countersunk screw.

***STUD NOTE** - Ensure the correct stud size is selected when building 100mm single or double skin walls. For single skin use 75mm and for double, 50mm.

Drawing Title		Clear Line 75mm	
Mullion Free Deflection-Fix Detail			
Scale @ A3	Drawn by	Checked	
1:4	S.BM	-	
unless stated		Date	
		12/04/16	
Drawing no.		Rev.	
FIX-CL75-DF		-	



Do not scale this drawing (printed or electronic versions)
This drawing is copyright.
Discrepancies and/or ambiguities within this drawing, both in text and information given elsewhere, must be reported immediately to this office for clarification before proceeding.
All works to be carried out in accordance with the latest British Standards/Codes of Practice unless specifically directed otherwise in the specification.
Responsibility for the reproduction of this drawing in full or in part, in any electronic format, lies with the recipient to check that all information has been replicated in full and is correct when compared to the original paper or electronic image.
Graphical representations of details on this drawing have been co-ordinated, but are approximations only. Please refer to the specification for details.