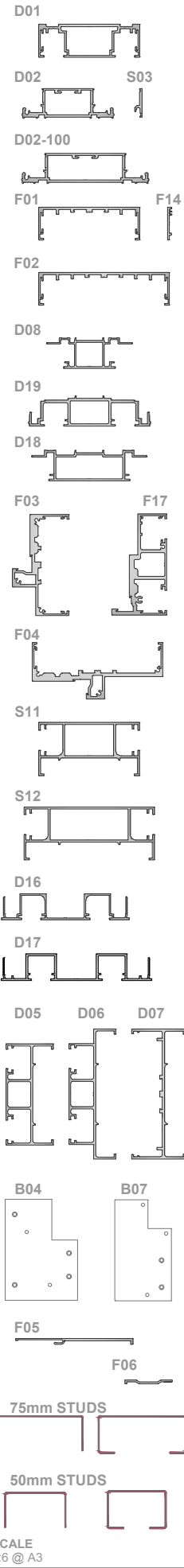
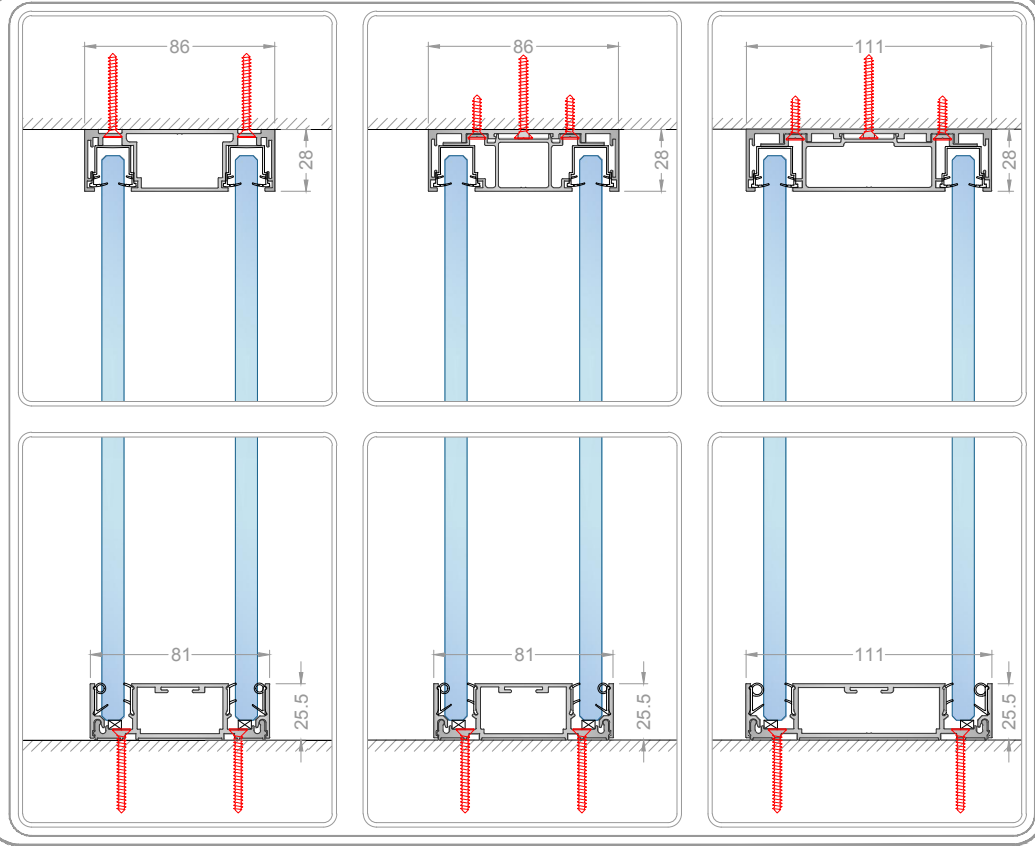


PROFILE HEAD & BASE

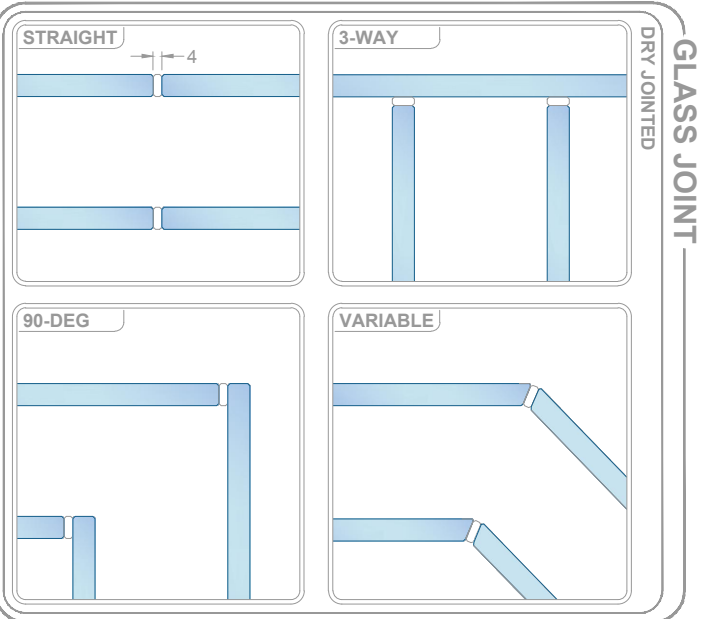
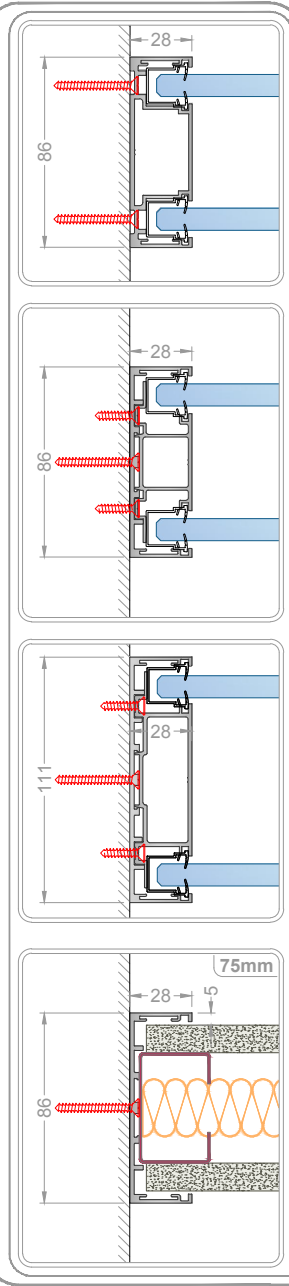
IDENTIFICATION



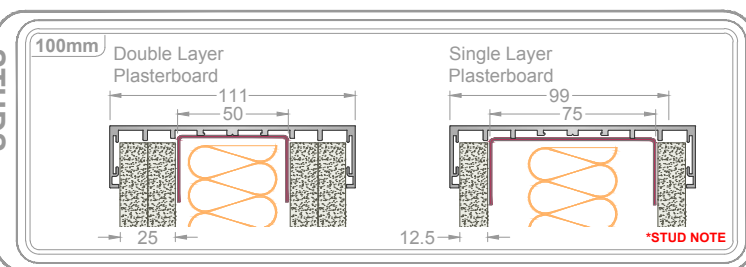
DOUBLE GLAZED



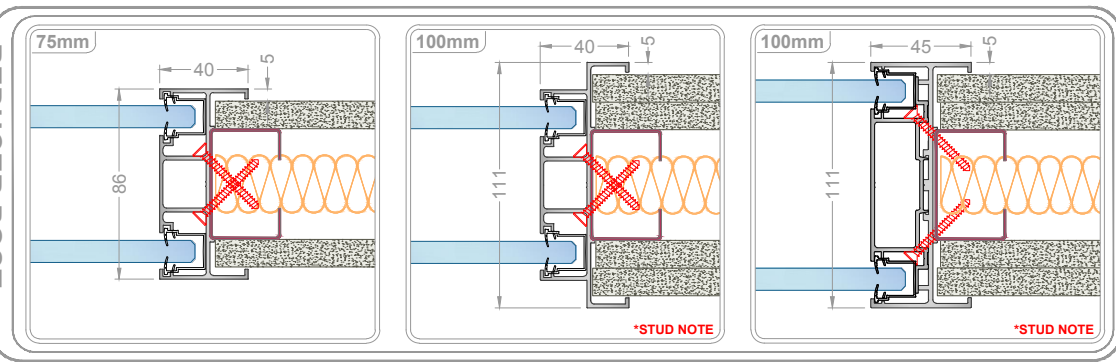
WALL ABUTMENT



STUDS

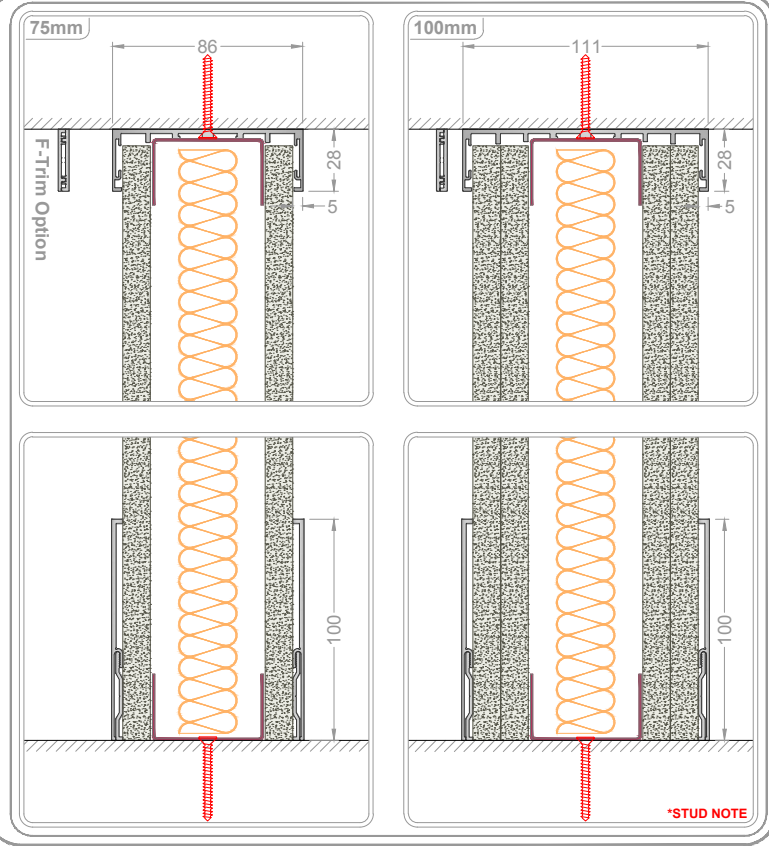


REDUCER POST

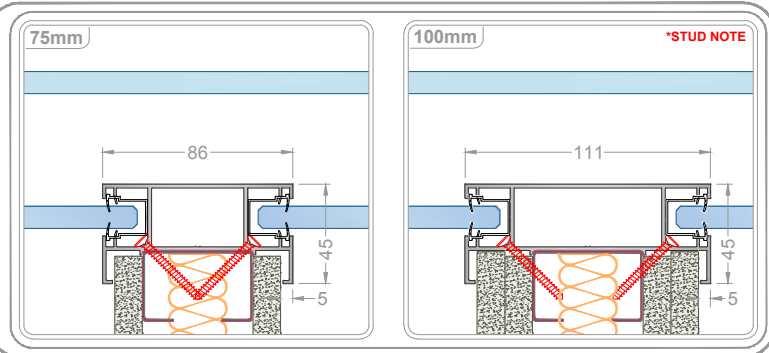


HEAD & BASE

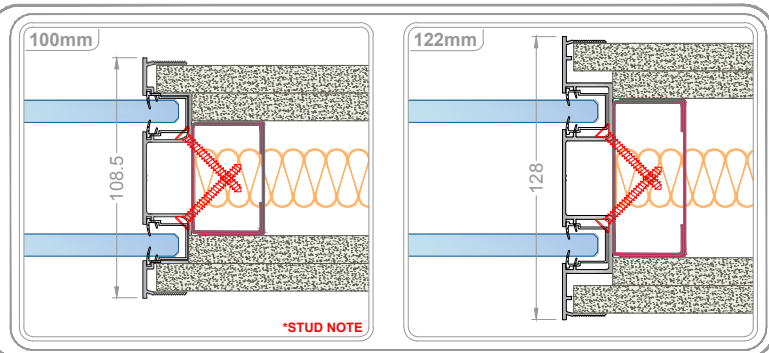
SOLID 75 & 100mm



3-WAY CONVERSION

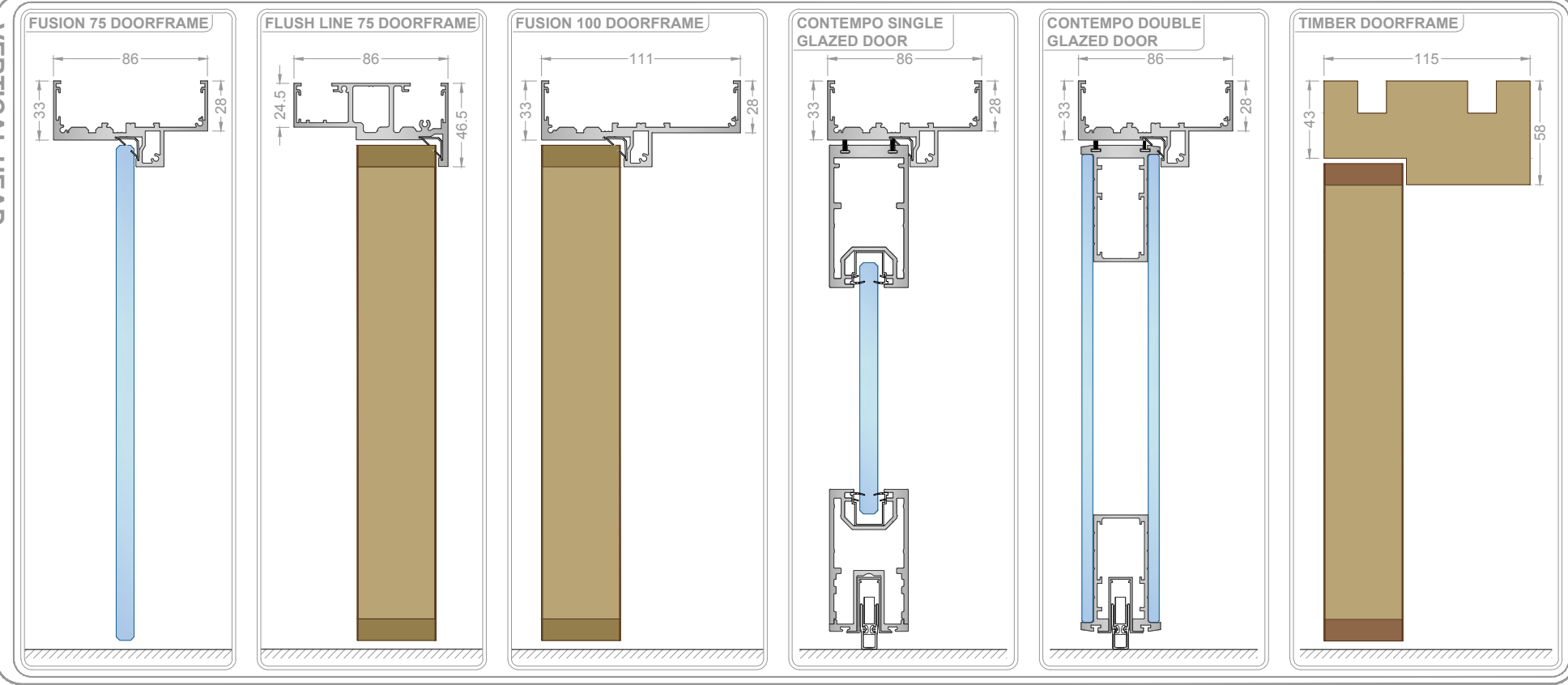


TAPEABLE CONVERSION

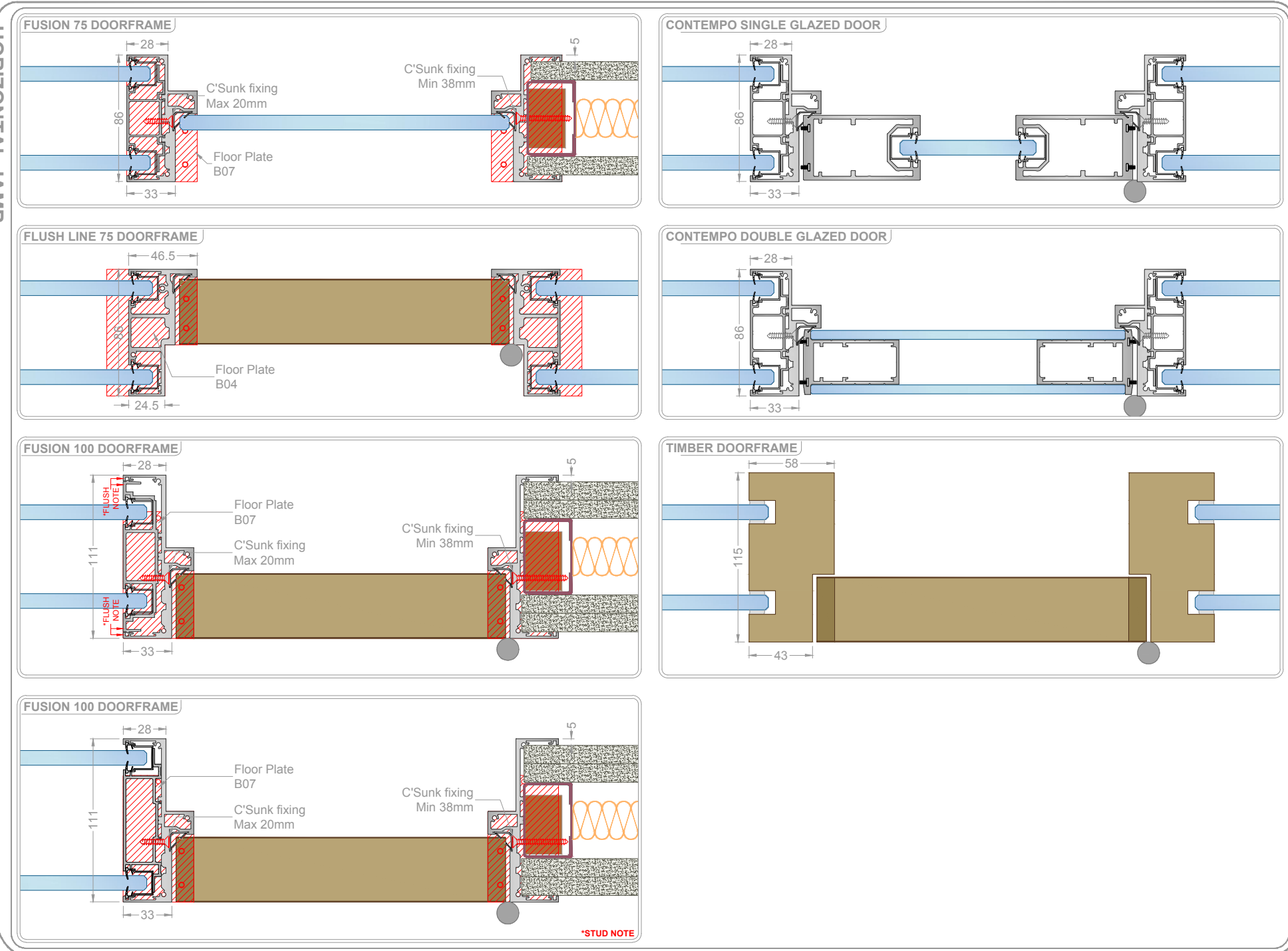


DOORFRAMES

VERTICAL HEAD



HORIZONTAL JAMB



Fixing Summary

Location: **Head Track, Base Track & Wall Abutment**

Use suitable fixings installed at 600mm centers to secure outer channel.
At 600mm centers secure inner channel with Min 20mm countersunk screw.

Location: **3-Way Conversion, Reducer Post & Tapeable Conversion**
Secure section at 600mm centers using Min 20mm countersunk screw.

Location: **Door frame**

Sections secured at 600mm centers, see detail for fixings.
Floor plates fitted to frame jambs using Min 25mm countersunk screw.

***STUD NOTE** - Ensure the correct stud size is selected when building 100mm single or double skin walls. For single skin use 75mm and for double, 50mm.

***FLUSH NOTE** - Ensure that Push-fit inner profile is correctly engaged into rear of frame. Surfaces are flush when sections are mated together.

Performance Summary

System Title: Clear Line Double Glazed 75mm (Mullion Free)

Document No.	Description	Rw
CDG-AP6	10 & 12mm Toughened Glass	43 dB
CDG-AP7	12 & 12mm Toughened Glass	45 dB
CDG-AP8	10 Toughened & 12.8mm Acoustic Safety Glass	48 dB
CDG-AP9	10.8 & 12.8mm Acoustic SafetyGlass	49 dB
CDG-AP11	12.8 & 12.8mm Acoustic Safety Glass	50 dB
CDG-AP1	Contempo Single Glazed Door in Frame	40 dB
CDG-AP2	Contempo Double Glazed Door in Frame	41 dB

System Title: Fusion Solid 75mm & 100mm

Document No.	Description	Rw
F75-AP1	Single Layer 12.5mm Wallboard, 50mm Stud & 25mm Cavity Insulation	40 dB
F75-AP2	Single Layer 12.5mm SoundBloc, 50mm Stud & 25mm Cavity Insulation	43 dB
F100-AP1	Two Layers 12.5mm Wallboard, 50mm Stud & 25mm Cavity Insulation	49 dB
F100-AP2	Two Layers 12.5mm SoundBloc, 50mm Stud & 125mm Cavity Insulation	52 dB