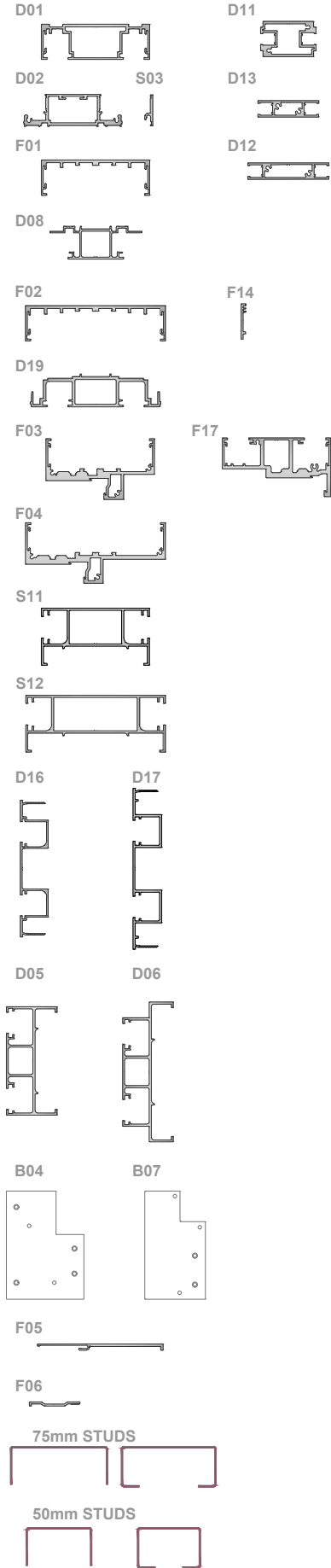


# PROFILE

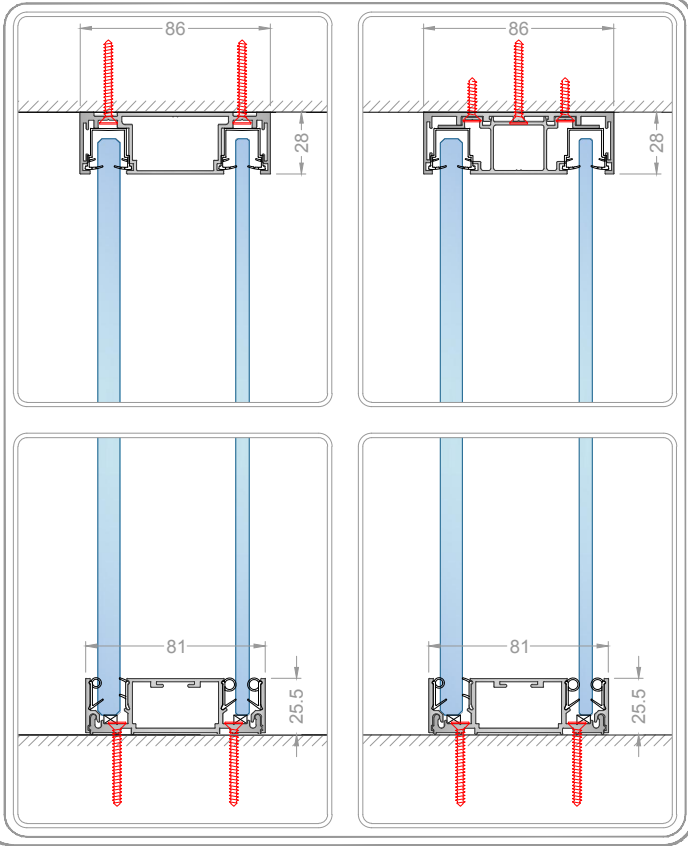
IDENTIFICATION



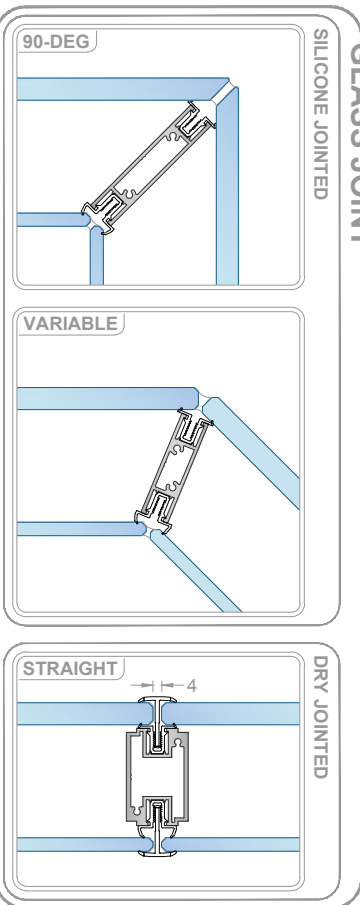
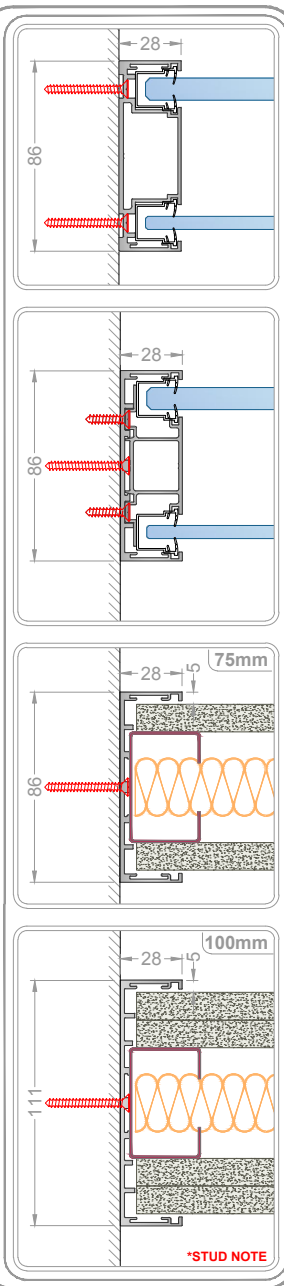
SCALE  
1:5 @ A3

# HEAD & BASE

DOUBLE GLAZED

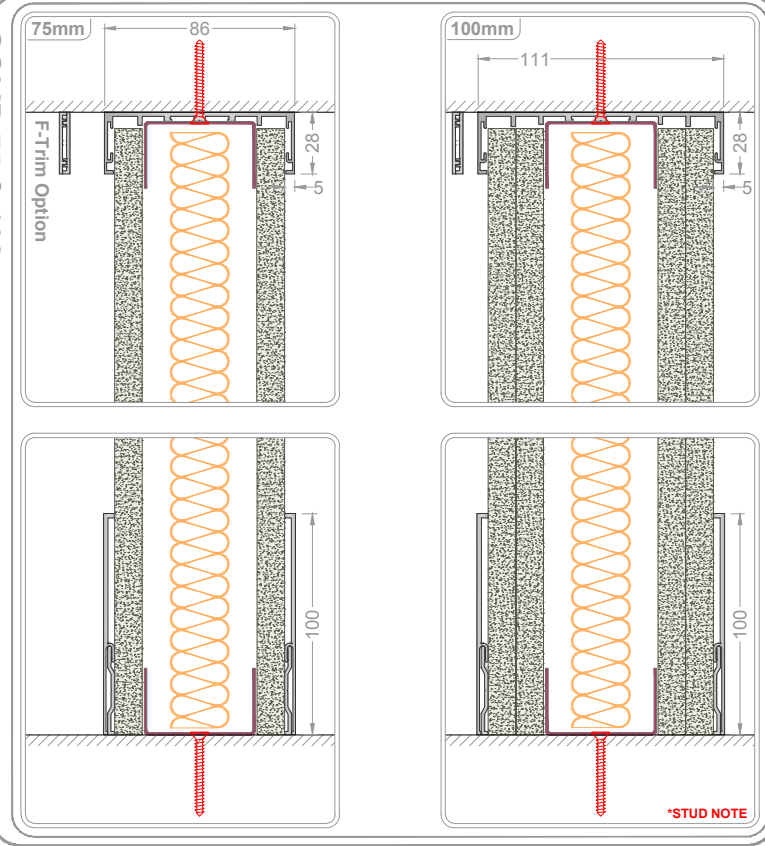


WALL ABUTMENT

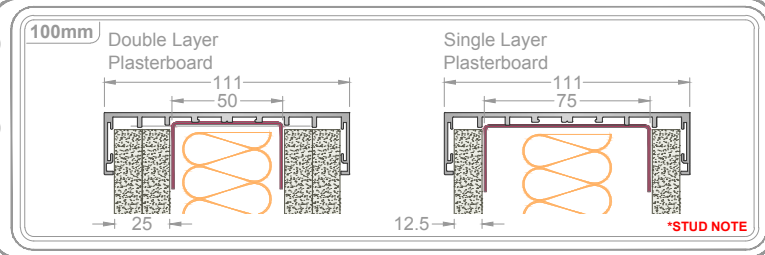


# HEAD & BASE

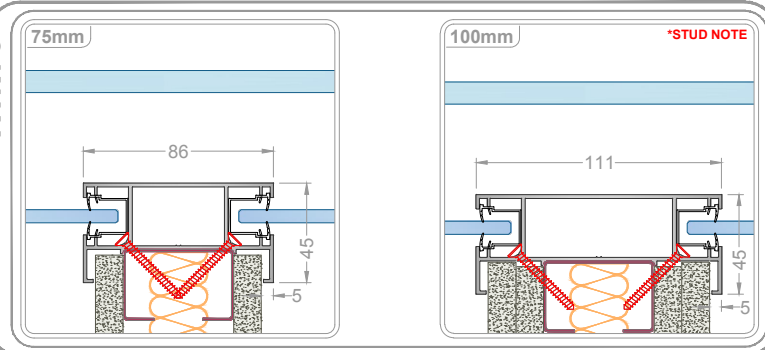
SOLID 75 & 100mm



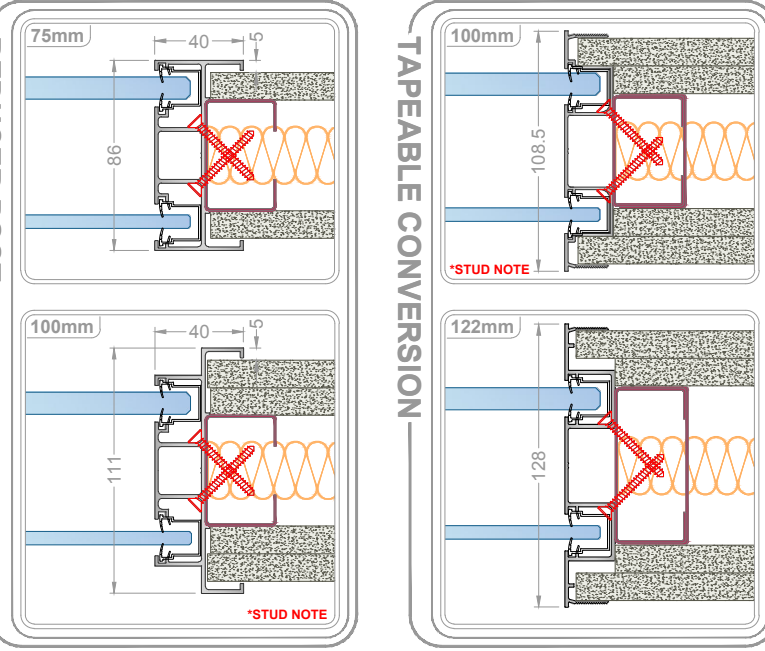
STUDS



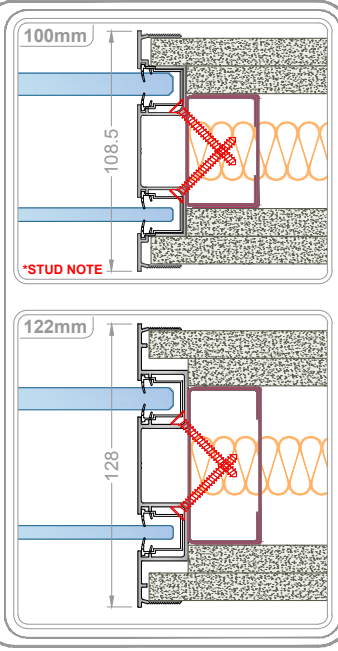
3-WAY CONVERSION



REDUCER POST

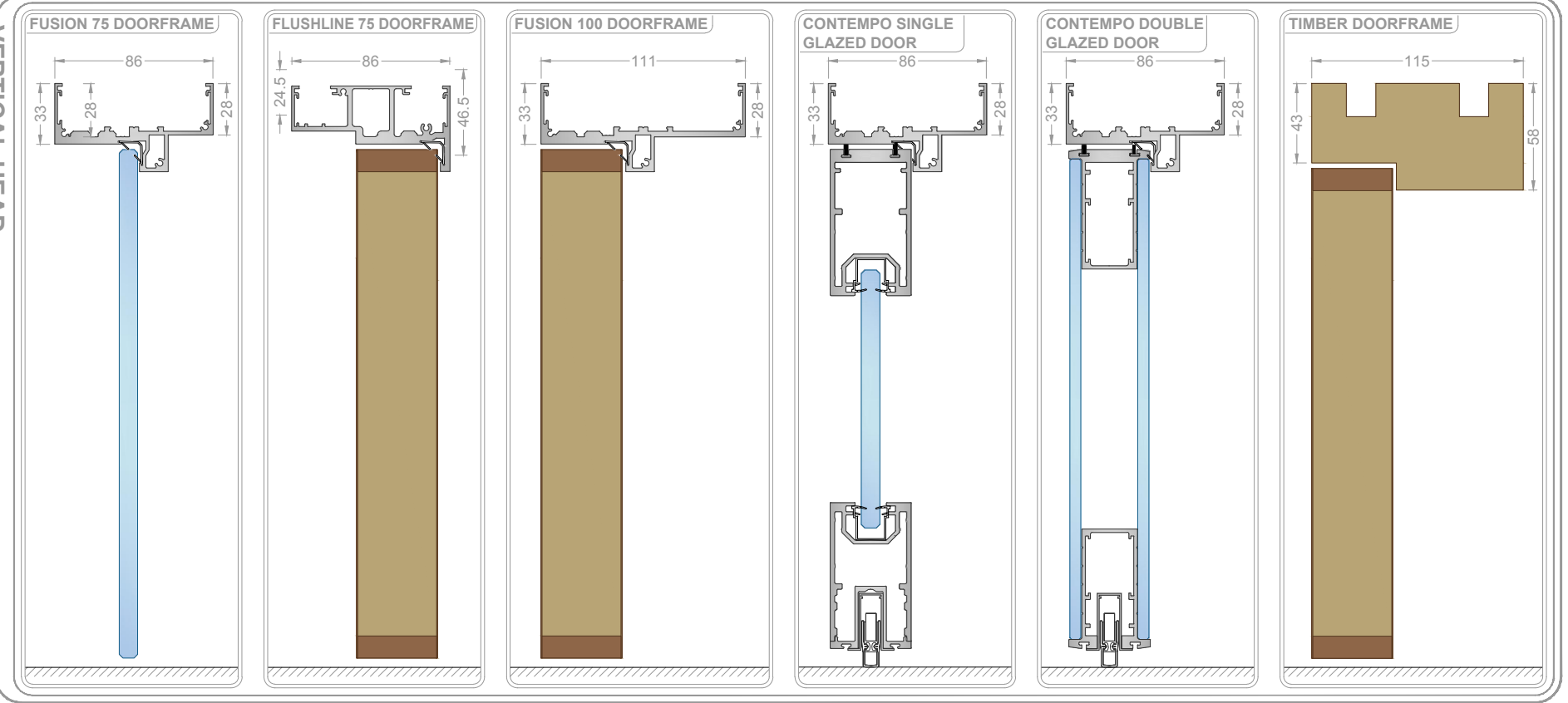


TAPEABLE CONVERSION

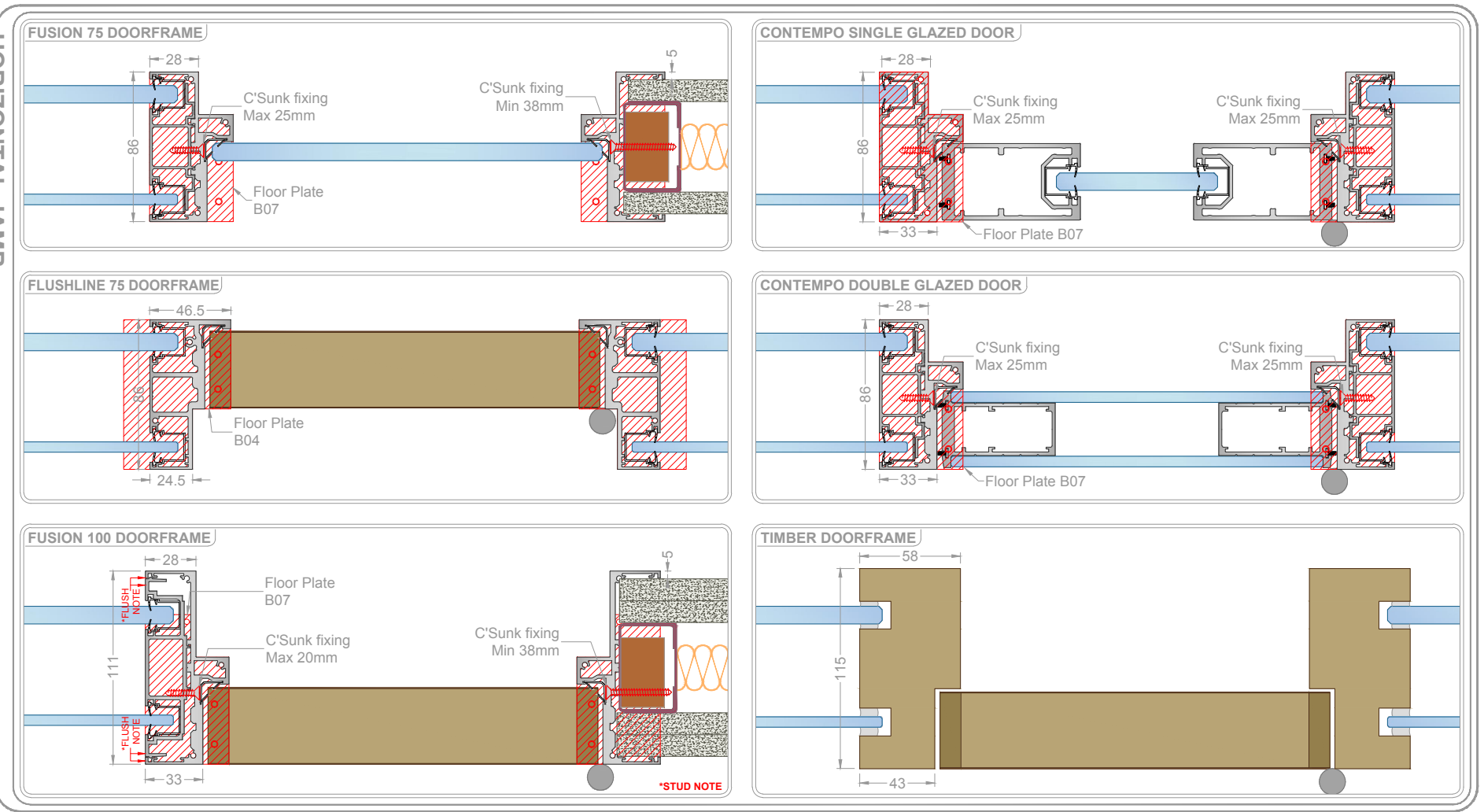


# DOORFRAMES

VERTICAL HEAD



HORIZONTAL JAMB



## Performance Summary

System Title:	Clear Double Glazed (With Mullions)	
Document No.	Description	Rw
CDG-AP3	10 & 6mm Toughened Glass	42 dB
CDG-AP4	10 & 12.8mm Acoustic Safety Glass	48 dB
CDG-AP5	10.8 & 12.8mm Acoustic Safety Glass	49 dB
CDG-AP10	12.8 & 12.8mm Acoustic Safety Glass	50 dB
CDG-AP1	Contempo Single Glazed Door in Frame	40 dB
CDG-AP2	Contempo Double Glazed Door in Frame	41 dB

## System Title: Fusion Solid 75mm & 100mm

Document No.	Description	Rw
F75-AP1	Single Layer 12.5mm Wallboard, 50mm Stud & 25mm Cavity Insulation	40 dB
F75-AP2	Single Layer 12.5mm SoundBloc, 50mm Stud & 25mm Cavity Insulation	43 dB
F100-AP1	Two Layers 12.5mm Wallboard, 50mm Stud & 25mm Cavity Insulation	49 dB
F100-AP2	Two Layers 12.5mm SoundBloc, 50mm Stud & 25mm Cavity Insulation	52 dB

## Fixing Summary

Location: **Head Track, Base Track & Wall Abutment**  
Use suitable fixings installed at 600mm centers to secure outer channel.  
At 600mm centers secure inner channel with Min 20mm countersunk screw.  
Location: **3-Way Conversion, Reducer Post & Tapeable Conversion**  
Secure section at 600mm centers using Min 20mm countersunk screw.  
Location: **Door frame**  
Sections secured at 600mm centers, see detail for fixings.  
Floor plates fitted to frame jambs using Min 25mm countersunk screw.  
**\*STUD NOTE** - Ensure the correct stud size is selected when building 100mm single or double skin walls. For single skin use 75mm and for double, 50mm.  
**\*FLUSH NOTE** - Ensure that Push-fit inner profile is correctly engaged into rear of frame. Surfaces are flush when sections are mated together.